

Happy
New Year!
2015

COUNTRY
AIRCHECK Weekly

December 30, 2014, Issue 428

Brad Paisley

PERFECT STORM

**MAX SPINS NOW
FOR #1!**

ARISTA
NASHVILLE

Score Settling: December & 2014 PPM

The complete December PPM Scoreboard is on page 11, but the short version is that Country radio took the expected seasonal hit due in part to Christmas programming in many markets. The month's cume leader was CBS Radio's **WUSN/Chicago** with 1,183,800. Cumulus' **KPLX/Dallas** was second with 1,165,700.

According to Nielsen's recent [analysis](#) of PPM data, 2014 was an up and down year for Country radio overall. The format reached an all-time high in June for audience share, though it's seen consecutive monthly declines since totaling almost 14%. On the year, Country was the No. 3 format among Persons 6+ (8.2%) behind News/Talk (8.8%) and Top 40 (8.3%). It was No. 2 among P18-34 (9.8%) behind Top 40 (12.3%), and No. 2 with P25-54 (8%) behind Top 40 (9%). Here are some thoughts from programmers on this month and the year as a whole:



Brian Thomas

WNSH/New York PD Brian Thom-

as: Nash, along with other Country stations, have to find better ways to compete against Christmas programming. We took a bigger hit from Christmas this year. [iHeartMedia AC] WLTW doing Christmas

was way up. From 2013-14, they went 6.7 to 8.3 during December week three. They went 10.2 to 11 for week four.

KPLX & KSCS/Dallas OM JR

Schumann: It's been a great year for both KSCS and KPLX. Both stations have experienced change in one way or another and have really grown. Both ended the year (fourth quarter, three-book average) in the top five Persons 6+, 12+, 18-49 and 25-54!



JR Schumann

(continued on page 9)



Band Ole Opry: Atlantic/WMN's Hunter Hayes gets together with Atlantic label mates The Railers and WMN execs ahead of Hayes' recent extended set on Opry At The Ryman, for which The Railers joined on Hayes' "Trouble With Love." The band was also celebrating their first single "Kinda Dig The Feeling." Pictured (l-r) are The Railers' Jonathan Lawson, WMN's John Esposito, Hayes, The Railers' Tyler Oban, Cassandra and Jordan Lawson, and WMN's Scott Hendricks.

Wilson's Veep Leap

Rubber City **WQMX/Akron** PD/morning co-host **Sue Wilson** has been promoted to VP & Dir./Operations for the four-station cluster. "Sue is a treasure, and I know that having her intelligence, leadership and media savvy available to us on behalf of all stations will be a huge benefit," says President **Thom Mandel**. Wilson's been with the station since 2006. Reach her [here](#).



Sue Wilson

©2014 Country Aircheck™ — All rights reserved. Sign up free at www.countryaircheck.com. Send news to news@countryaircheck.com

ERIC CHURCH

TALLADEGA

from the R.I.A.A. **PLATINUM** certified album, *The Outsiders!*
Top 10 and rising!

Power UP!!!

(click to view video)



EMI
RECORDS
NASHVILLE



mickey
guyton

better than you
left me

available now

add date january
12

Capitol
RECORDS
A UNIVERSAL MUSIC COMPANY

BORMAN
ENTERTAINMENT

Wheeler Up In Detroit

Cumulus News/Talk WJR/Detroit PD **Mike Wheeler** has been upped to OM for the company's four-station cluster, which includes Country **WDRQ** and Icon Country **WDRQ-HD2**. Wheeler joined in September from iHeartMedia/Hartford & New Haven, CT, where he was RPM. His prior stops include Atlanta, St. Louis and Toledo, and he got his start on-air in Detroit. "Mike Wheeler brings a wealth of experience to the table," says SVP/Corporate & Programming **Mike McVay**. "His history in Detroit, abilities at coaching talent and his knowledge of programming gives us another strong programming presence within Cumulus."



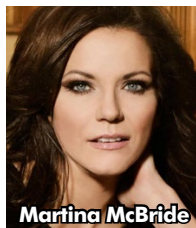
Mike Wheeler

Desmond To Helena

Former Apex WCKN/Charleston, SC morning host **Dale Desmond** will join **Cherry Creek's** five-station Helena, MT cluster as OM and PD/morning host of Country **KBLL** on Jan. 12. He succeeds **Steve King**, who has left the company. Desmond exited 'CKN earlier this month after nearly two years (CAT 12/9). Past stops include KTHK/Idaho Falls, ID, where he spent seven years as PD/morning host. Congratulate him [here](#).



Dale Desmond



Martina McBride

New Icon Signing

Martina McBride is the latest artist to sign with **Nash Icon**, the joint venture between **Big Machine Label Group** and **Cumulus**. She follows Reba (CAT 10/21) and Ronnie Dunn (CAT 12/1). McBride revealed the signing on *Today*. Watch [here](#).

Ryan Rises

CBS Radio VP/AC Programming and WCBS & WWFS/New York PD Jim Ryan has been promoted to SVP/Programming. He'll retain his programming duties in New York. Ryan has been with the company since 2010 after running his own consulting business. His prior stops include iHeartMedia/New York, as well as stations in Philadelphia, Denver, Pittsburgh, Miami and Detroit.



Jim Ryan



PAGE THREE PIC

Clips & Dip: Syndicated radio vet Ron Hunstman (r) takes a dip from his former boss Charlie Daniels during the 1980 shooting of a Skoal television commercial at Daniels' Twin Pines Ranch. Send pictures celebrating your own old habits to pagethreepic@countryaircheck.com.

Whatley To Las Cruces

Triton Digital Sr. Mgr./Publisher Development **Charles "Andy" Whatley** has joined **Adams/Las Cruces, NM**, which includes Country **KGRT**, as MM. He replaces Veronica Vaillancourt-Test, who exited in October (CAT 10/23). Whatley's radio background includes ownership of stations in Santa Barbara, CA, San Luis Obispo, CA and McAllen, TX, as well as management roles in Los Angeles, San Francisco and Washington.



Andy Whatley

Jacobs To DC

iHeartMedia **WMZQ/Washington** morning co-host/traffic reporter **Aly Jacobs** has moved to middays, replacing Boxer, who recently returned to the company's WCOL/



Aly Jacobs

©2014 Country Aircheck™ — All rights reserved. Sign up free at www.countryaircheck.com. Send news to news@countryaircheck.com



TOBY KEITH DRUNK AMERICANS

THE # 7 PASSION SONG
WITH CORE LISTENERS 25-44

THE # 1 PASSION SONG
WITH ADULT LISTENERS 35-54

THE # 4 PASSION SONG
WITH CORE FEMALES

VIEW THE ANIMATED VIDEO NOW

-CALLOUT AMERICA



KELSEE BALLERINI



"LOVE ME LIKE YOU MEAN IT"

36* CA/MB **35*** BB

"...ONE OF THIS YEAR'S HIGHLIGHTS." - TIM RICHARDS, KMLE

"...A NATURAL" KIX LAYTON, WSSL

"...WHAT WE NEED IN THIS FORMAT" - BRAD AUSTIN, WXYC

Columbus, OH for live afternoons ([CAT 9/22](#)). Jacobs joined 'MZQ last summer ([CAT 7/22/13](#)). Reach her [here](#).

Valentine Leaves KEYEY

Longtime iHeartMedia **KEYEY/Minneapolis** personality **Donna Valentine** has exited after 14 years. Most recently, Valentine hosted nights, moving from mornings with the addition of **Chris Carr & Company** ([CAT 8/15](#)). No word on plans to replace her.



Donna Valentine

Reese Returns

Southern Stone **WKRO/Daytona Beach, FL PD Dallas Reese** will return to Hometown Columbia **WWNQ/Columbia, SC** in mornings, just a month after leaving the post ([CAT 12/1](#)). "I just missed my family, co-workers, clients and local country music fans," says Reese. "I want to thank Hometown Columbia Media and all my co-workers for their willingness to take a second chance on me. I promise I won't let you down!" He gets back on the air Monday (1/5). Reach him [here](#). No word on plans to replace him in Daytona Beach.



Dallas Reese

Greninger To Medford

Morris **KXXX/Aberdeen, WA MD/** afternoon personality **Ashley Greninger** will join Bicoastal's **KRWQ/Medford, OR** as PD and morning co-host alongside **Jason Allen** on *The Q Crew* Jan 12. The position has been vacant and covered by OM **Don Hurley**, who remains in that role. "I am looking forward to connecting with listeners, being active in the community, and working in a competitive market," Greninger says. "I am humbled by this opportunity." Reach her [here](#). Plans for the position at 'XXXK are pending.



Ashley Greninger

Alpha Gets Access

Alpha Media has agreed to purchase **Access 1's** nine stations including Country stations **KKUS/Tyler, TX** and **KYKX/Longview, TX**. Alpha will assume operation of the properties via

LMA Jan. 1. When this and other pending acquisitions are complete, Alpha will own 83 radio stations in more than 12 markets.

JVC In Orlando

JVC Country **WOTW/Orlando** has launched as "103.1 The Wolf" with 10,000 songs in a row, as reported via [Breaking News \(12/19\)](#). The station flipped from Spanish Contemporary WHKQ Dec. 19. Former crosstown Country WWKA afternoon personality **Rod "Shadow" Grant** is PD. The station takes on Cox's market-leading WWKA, which had a 6.5 in the November PPM ratings. WHKQ had a 2.8 (16) in its last month.

A&O&B & Norman

Curb CEO **Jim Ed Norman** will be the keynote speaker at **Albright & O'Malley & Brenner's 21st Annual Pre-CRS Seminar** Feb. 25 at the Ford Theater in the Country Music Hall of Fame and Museum. Norman will share his insights into the current state of the country music industry and the future of the format, as well as some entertaining stories from the past. "Jim has been in the middle of at least four country music revolutions – from the days of Anne Murray and Kenny Rogers to Randy Travis and Dwight Yoakam to Garth and Trisha and now in the latest boom with new artists like Dylan Scott and Tim Dugger," says partner **Mike O'Malley**. "He's seen it all, knows what works, and I can't wait to hear what he has to teach us." The seminar will also feature results of A&O&B's 10th annual online perception study *Roadmap 2015*. Clients and broadcasters in non-competitive markets may attend for free. RSVP [here](#).

Froggy Lends A Hand

Keymarket **WOGI/Pittsburgh** morning team *Frogman & Gator* spent the lead-up to Christmas soliciting nominations for families in need of a "Christmas Miracle." The event culminated with the Dec. 21 delivery of more than \$4,000 in gifts to the home of a single father and his three children, who



WOGI's Breaking & Entering Christmas

©2014 Country Aircheck™ — All rights reserved. Sign up free at www.countryaircheck.com. Send news to news@countryaircheck.com

RING IN 2015 WITH

STONE CREEK RECORDS

Heavy NEW YEAR

PARMALEE
CLOSE YOUR EYES

RANDY HOUSER
LIKE A COWBOY

"If you cannot smile when you watch these guys play, your face is busted!" **-GREGG SWEDBERG VP PROGRAMMING KEEY/MINNEAPOLIS**

"I just saw...um...I don't know what I just saw, but it was GOOOOOOOODDD!" **-TONYA CAMPOS PD KKGO/LOS ANGELES**

"Awesome! I think Leonard Skynard and The Allman Brothers have been reincarnated in Country Rock!"
-ROB MORRIS VP PROGRAMMING CBS MIAMI

"It's like you've been punched in the face but you like it. I feel it's my duty as a music lover to add this record. I don't even know if I have a choice!" **-SAM DIGGITY PD KTOM/MONTEREY**

"Davisson Brothers Band just turned Madison into a Davisson Brothers TOWN!" **-FLETCHER KEYES PD WWQM/MADISON**

"We're a long way from West Virginia, but it sounds GREAT here too!"
-NATE DEATON GM KRTV/SAN JOSE

"These guys just blew the door off" **-KEN BOSEN PD WKIS/MIAMI**

"That's the loudest crowd reaction of anybody we've ever had here. This is the REAL DEAL!" **-JAY DANIELS (PD) AND TC (MD) KXLY/SPOKANE**

"I've seen a lot of bands here. I've never seen anybody ever tear it up like they just did. That's some CRAZY stuff! Made our day!"
-TIM RICHARDS PD KMLE/PHOENIX

"That was 10am in the morning. I can't imagine what 10pm sounds like!" **-TIM POHLMAN SVP PROGRAMMING CBS PHOENIX**

"I don't dance, but I was tappin' a foot! WOW! So much energy. Like Otis Day and the Knights meets Soggy Bottom Boys!"
-B-DUB MD KUPL/PORTLAND, OR

"Let's BREAK something! I feel like breaking something these guys are so good!" **-ED HILL PD KMPS/SEATTLE**

DAVISSON BROTHERS BAND

JESSE JAMES



IMPACTING 1/20



CLICK HERE
TO SEE WHAT
TOP PDS
ARE SAYING

Michael Powers ★ mpowers@starfarmnashville.com ★ 615-438-6372
Matt Corbin ★ mcorbin@starfarmnashville.com ★ 615-330-2863
Brad Helton ★ bhelton@starfarmnashville.com ★ 615-400-3269
Chris Borchetta ★ cborchetta@starfarmnashville.com ★ 323-208-1166



had fallen on hard times after the loss of their wife and mother. "This was more a reflection of everything that is right in a time when we are so used to hearing about everything that is wrong," says **Frogman**. See local TV coverage of WOGI's *Breaking & Entering Christmas* [here](#).

Gig Alert

Cumulus/Nashville, which includes Country stations **WKDF (Nash)** and **WSM-FM (Nash Icon)**, has openings for full and part-time air personalities. A minimum of five years full-time on-air experience is required. OM **Charlie Cook** tells **Country Aircheck** strong social media skills and knowledge of Scott Studios and OpX are also helpful. Candidates currently living in the Mid-South are preferred. Airchecks and resumes to Cook [here](#).

Flips & Formats

Curtis Media Classic Hits **WPCM-AM/Burlington, NC** and companion 250W FM translator **W236BO** (95.1) have flipped to Country. OM/PD **Carson Johnson** tells **Country Aircheck** the station is currently airing Westwood One's Mainstream Country format and a local morning show will be revealed soon. Reach him [here](#).

iHeartMedia/Lexington, KY has launched "Icons 98.5" via **WBUL-HD2** and Edgewater-owned 250W FM translator **W253BK**. The station can be heard [here](#) and will compete directly with Cumulus' recently launched **WLVK (Nash Icon)** ([CAT 10/31](#)). iHeartMedia and Cumulus also operate, respectively, **WBUL** (98.1 The Bull) and **WLXX** (Nash FM 92.9).

No, Korea

Cumulus/Cincinnati stations, which include Country **WNNF**, have been airing spots for Sony Pictures' *The Interview* at no charge since Christmas. Staffers have also written and voiced an editorial in support of the film's release, which was hampered by hackers and alleged threats by the North Korean government. "We support the decision of Sony to release the movie," says MM **Dave Crowl**. "As a tribute to the generations of Americans and their families who fought to preserve our rights, we thought this is the least we could do."

Black & White & Web All Over

• **KHKX/Odessa, TX** "radio staple" morning team **Mike** and **Dana** ready for "a quieter life." -[Midland Reporter-Telegram](#),

ADD DATES

JANUARY 5

AUSTIN WEBB/All Country On You (Streamsound)
DOWNDAY/Stuck On 17 (Render)

JANUARY 12

MICKY GUYTON/Better Than You Left Me (Capitol)
FRANKIE BALLARD/Young & Crazy (Warner Bros./WAR)

JANUARY 20

LOGAN MIZE/Can't Get Away From A Good Time (Arista)
RACHELE LYNNAE/Whole Lotta Nothin' (Momentum/in2une)
A THOUSAND HORSES/Smoke (Republic Nashville)
THE VIC HARRIS BAND/Rowdy Ass Cowboy (Airwave)
DAVISSON BROTHERS BAND/Jesse James (Star Farm)

Send yours to adds@countryaircheck.com.

Odessa American

- **Bobby Bones** "has a hard time shaking the guilt and pain" surrounding his late mother's struggles. -[The Tennessean](#)
- **Miranda Lambert** and **Blake Shelton** performed at her Ladysmith bed and breakfast. -[KXII-TV/Sherman, TX](#)



Crib Note

Congratulations to Columbia Mgr./Regional Promotion **Brooke Meris** and husband **Lyndon Meris** on the Dec. 19 birth of son **Sloan Preston Lyndon Meris**. "Lyndon Meris and I welcomed the love of our lives into the universe today," Meris said via Facebook. "We couldn't be more in love with this huge (10lbs, 12oz 21.5 inches long) little man!" Reach Meris [here](#).



Life Notes

Our thoughts and prayers are with *Grand Ole Opry* and Country Music Hall Of Fame member **Little Jimmy Dickens**, who is in critical care at a Nashville-area hospital. He was admitted Dec. 25 with an undisclosed illness. Dickens last performed at the *Opry* Dec.



©2014 Country Aircheck™ — All rights reserved. Sign up free at www.countryaircheck.com. Send news to news@countryaircheck.com

JOSH DORR
SAVE YOUR BREATH CLICK TO LISTEN
THE DEBUT RELEASE FROM RCA'S NEWEST STAR.
#2 MOST ADDED!

41 FIRST WEEK STATIONS!



CONSIDERING ALL OF THE
BAD CHOICES YOU WILL
MAKE TOMORROW
EVENING:



HERE IS ONE **GOOD CHOICE**



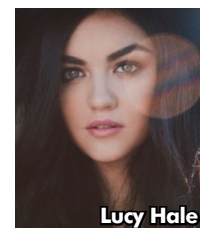
ADDS
1/12/15

LISTEN NOW!



20 as part of his 94th birthday celebration. Send cards and well wishes to him c/o Grand Ole Opry House, 2804 Opryland Drive, Nashville, TN 37214.

DMG/In2une's **Lucy Hale** has canceled her winter dates due to vocal strain. Hale's *The Road Between* tour was set to kick off Jan. 29 in Boston ([CAT 12/2](#)). Ticket holders should contact their point of purchase outlet for refund information.



Lucy Hale

Chronicle

Condolences are extended to the family and friends of former KHAK/Cedar Rapids, IA morning co-host **Scott "Steele" Beaty**, who died Dec. 18 after battling cancer. Services will be held Jan. 3 at First Lutheran Church in Cedar Rapids. In lieu of flowers the family asks that memorials be made to wife Misty Beaty, c/o Cedar Memorial Park Cemetery Funeral Home, 4200 First Avenue Northeast, Cedar Rapids, Iowa 52402. Longtime morning partner Ryan "Brain" Brainerd shares some memories [here](#).



Scott "Steele" Beaty

Condolences are also extended to the friends and family of longtime Nashville broadcaster and Tennessee Radio Hall of Famer **Teddy Bart**, who passed Dec. 20. Bart came to Nashville in the '60s as a singer/songwriter, joining WSM-AM as a talk show host in 1969, moving to the morning show in 1972, where he continued until 1981. He hosted TNN's *Off Stage* in 1982-83 and also held various anchor positions on Nashville TV stations. Bart was inducted into the Tennessee Radio Hall of Fame in 2014. No memorial



Teddy Bart

service is planned.

Additionally, condolences are extended to the loved ones of singer-songwriter and Nashville Songwriters Hall Of Famer **Larry Henley**, who died Dec. 18 after a long illness. He was 77. As the lead singer of '60s rock 'n' roll group The Newbeats, Henley had success with hits including "Bread And Butter." He later penned "The World Needs A Melody," among others, and co-wrote "The Wind Beneath My Wings" and "Til I Get It Right." Services were held in Longview, TX Dec. 22 with burial the following day in nearby Gilmer. A celebration of life service is expected in Nashville after the first of the year. In lieu of flowers, donations may be made to Nashville's Alive Hospice, 1710 Patterson St., Nashville TN, 37203. More [here](#).



Larry Henley

News & Notes

Sugarland, Live Nation and 16 other defendants have agreed to pay \$39 million to settle claims from the 2011 Indiana State Fair stage collapse ([CAT 8/15/11](#)), which killed seven and injured nearly 100. Read local coverage [here](#).

JLD Media has purchased **KQBL/Boise, ID** and booster **KQBL-FM1** from **FM Idaho** for \$200,000. FM Idaho will operate the station until closing, pending FCC approval.

High Plains has purchased four Plainview, TX stations from **Rhattigan**, including Country **KKYN**, for \$100,000. The deal is pending FCC approval.

Beginning Jan. 5, email addresses for **Show Dog** staffers will follow the convention firstname.lastname@showdogmail.com. The company restructured its partnership with **UMG/Nashville** last month, leading to the departure of eight staffers ([Breaking News 12/9](#)).

Newly formed **Studio A Preservation Partners** – **Mike Curb**, **Chuck Elcan** and **Aubrey Preston** – have completed their October purchase for \$5.6 million from **Bravo Development** (CAT 10/3). They'll work with Studio A operator/artist **Ben Folds** to continue running it as a working recording studio.

Virtual News Center EVP/Business Development and former Country programmer **Joel Dearing**'s Christmas lights display at his Indianapolis home (CAT 12/8) was ranked the best in the *Light Up Indy* listing. See it [here](#).

BMG Chrysalis recently extended its publishing agreement with songwriter/producer **Jeff Stevens**.

Show Dog-Universal's **Toby Keith** was named Oklahoma University's "Patriot Of The Game" at the Dec. 6 OU/Oklahoma State game.

Artist News

Pearl/RCA's **Garth Brooks** will appear during all four hours of the Jan. 8 *Today* on **NBC-TV**, a first for a guest in the show's 62 years.

The **National League of Junior Cotillions** has included **Carrie Underwood** and **Taylor Swift** in its list of "The 25 Best-Mannered People of the Past 25 Years." Underwood comes in at No. 13 "for consistently demonstrating courtesy to her fans," while Swift is at No. 25 "for inspiring young fans with her music and mannerly conduct." *Tonight Show* host **Jimmy Fallon** tops the list. See all 25 nice folks [here](#).

Atlantic/WMN's **Hunter Hayes** will perform with Grammy Camp Jazz Session Students at *Grammy In The Schools Live* Feb. 4 in Los Angeles. More [here](#).

Charlie Daniels' 40th Anniversary Volunteer Jam will be Aug. 12 at Nashville's Bridgestone Arena. The lineup includes **Montgomery Gentry**, **Travis Tritt**, **Billy Ray Cyrus** and the **Kentucky Headhunters**. Tickets go on sale Jan. 30 [here](#) and [here](#). Profits will go to **The Journey Home Project** and **The Predators Foundation**.

ReeSmack/Thirty Tigers' **Old Dominion** will open for **Kenny Chesney** on the stadium dates of his *The Big Revival Tour*, joining other openers Brantley Gilbert, Jake Owen, Chase Rice and Cole Swindell. See the band's dates [here](#).

Dolly Parton's *Blue Smoke...The Best Of* album went platinum in the UK.

Score Settling: December & 2014 PPM

(continued from page 1)

We said goodbye to a radio icon in KSCS's Terry Dorsey, and are excited to welcome the newest additions to the teams with Dir./ Promotion Rebecca Kaplan and KPLX morning host Skip Mahaffey. These two stations are in a great position to do well, I couldn't be more proud of the staffs and I'm looking forward to a great 2015!

KMNB/Minneapolis PD Kenny Jay: December wins cap off a big year for #teambuzn! In Jan.-Dec. 2014 averages, Buz'n was Minnesota's Country leader Persons 18-34 and 18-49, finishing third overall in the market P18-34 and fifth overall P18-49.

WDSY/Pittsburgh OM/ PD Mark Anderson: Sadly the Pittsburgh Country market continues to erode; total Country listening here is down 14% year-over-year. As expected, Y108 continues to sit atop the seven measured, metro-licensed Country FM frequencies (total Audience/total week), with a 50% lead over our closest competitor. Y108 also leads the Country pack Persons 12+, 18-34, 18-49, 25-54 and 35-64.



Kenny Jay



Mark Anderson

WKDF & WSM-FM/Nashville OM/ PD

Charlie Cook: We are very pleased that the Cumulus Country stations continue to perform so well. As the PD for both, having them tied for the format lead in the market is the best I can hope for. It keeps the fights in the hallways to a minimum. On a personal note it was a great day for me with both stations doing well and Jim Harbaugh coming home to Michigan. Go Blue! For the month, WKDF and WSM-FM are tied for eighth Persons 6+ with 5.3 shares. P25-54 WKDF has a 4.9 and WSM-FM a 4.6. Both WSM-FM and WKDF have 5.0 shares P18-34 and WSM-FM has 7.5 and WKDF a 5.4 among W18-49.



Charlie Cook

KCYE/Las Vegas PD Kris Daniels: For 2014 (12 month average) KCYE was top 10 Persons 25-54, top five among English-speaking stations with Women 25-54 and by far the No. 1 Country station in the city of sin. KCYE won 10 out of the 12 books this year, including December, where KCYE had a nearly two-to-one advantage over the Country competitor. Big plans are in the works for 2015, including the return of *Coyote Country Fest* at the Orleans Arena!



Kris Daniels

KWNR/Las Vegas PD Jojo Turnbaugh: Lots to be excited about here in Las Vegas for the entire Bull staff. This was our 12th straight monthly Country win and a clean sweep for 2014 for Persons 18-34 and Women 18-34, 11th straight Country win P18-49 and ninth straight with Women 18-49. It was also a great year for the Country format. Musically I think we are seeing a shift back to a mainstream sound and we'll see if that continues in the new year. Here in Las Vegas we are keeping our fingers crossed for more Country meters as the life group is severely under-sampled. That said, Happy New Year!



Jojo Turnbaugh

WLHK/Indianapolis PD Fritz Moser: Despite a soft start to the year Hank FM finishes with its best ever! We've hit new highs in PPM including being No. 1 or No. 2 Persons 18-49 nine of the last 12 months. Mornings with **Dave O'Brien** is currently No. 2 P25-54 and only behind **Bob & Tom**, who are based in Indy. It's not just the ratings – Hank FM hosted several major events including our *Monumental Music Jam* with Florida Georgia Line, Thomas Rhett and Brantley Gilbert. November's *HankFest* featured Gary Allan, Scotty McCreery and Sam Hunt. Plus we produce the annual downtown fireworks show with more than 300,000 viewing around Indianapolis. Our sales manager **Taja Graham** is celebrating the year, too. According to Miller Kaplan, while our competitors' billing dropped, Hank's not only grew, but 2014 will be our strongest year on the books. We're already planning exciting local events and exclusive country shows for 2015. Keeping our focus on our listener will help us stay top of mind.



Fritz Moser

And this is the best December WLHK has had to date. For the month, we're the No. 1 overall station P18-34, and No. 1 Country station in every marketable demo including P25-54 and 25-34 – even P6-49. Time to celebrate with a glass of leftover eggnog!

WQDR/Raleigh PD Lisa McKay: 'QDR must have made Santa's nice list as we were able to claim the top spot among Persons 25-54 in December again. Thanks Santa! **CAC**



Lisa McKay

December 2014 PPM Scoreboard

Country radio shares were down 1.2% compared to November. Of the 87 subscribing stations that posted a 1.0 share or higher, 35 increased, 43 decreased and seven were flat compared to last month. Total cume topped 35,923,460.

The cume leader remains CBS Radio's **WUSN/Chicago** with 1,155,200.

Cumulus' **KPLX/Dallas** was second with 1,140,200.

Legend: A "+" indicates a Classic Country outlet; a "^" designates co-owned Country stations in the metro; "t" indicates a tie; and a "*" indicates a station best in that statistic. Ranks are among subscribers.

Station/City	November 6+ Share	Rank	December 6+ Share	Rank	November Cume	December Cume
WKHX/Atlanta	3.5	13	3.6	12	723,800	683,100
WUBL/Atlanta	5.5	5	5.1	6t	785,900	673,700
KASE/Austin ^	6.1	3	6.7	2	366,200	359,000
KVET/Austin ^	6.3	2	6.3	3	357,300	316,100
KOKE/Austin	2.1	18	2.4	17t	96,600	97,400
WPOC/Baltimore	7.7	1	8.6	1	478,400	520,800
WKLB/Boston	5.7	3t	6.0	3t	867,700	862,900
WBWL/Boston (flipped to Country 6/13/14)	1.4	20	1.6	21	347,800	328,300
WCTK/Providence (Boston)	1.1	21	1.1	22	195,200	177,300
WKKT/Charlotte	6.6	3t	6.6	3	504,000	466,900
WSOC/Charlotte	7.8	1	7.7	1	531,600	506,060
WUSN/Chicago	4.1	6	3.5	8t	1,183,800	1,155,200
WNNF/Cincinnati	2.6	15	2.4	14t	290,100	258,100
WUBE/Cincinnati ^	7.6	2	7.3	2	458,800	441,700
WYGY/Cincinnati ^	2.2	16t	1.9	17t	181,600	168,500
WGAR/Cleveland	7.1	3	6.8	4t	442,300	420,100
WCOL/Columbus, OH	10.4	1	9.8	1	490,600	468,100
WHOK/Columbus, OH	1.3	14t	2.0	12	92,600	94,700
KPLX/Dallas ^	4.9	3	4.8	3	1,165,700	1,140,200
KSCS/Dallas ^	4.3	4	4.6	4	890,200	884,100
KWOF/Denver	2.5	18t	2.2	20	303,300	264,500
KYGO/Denver	5.2	4	5.2	3t	510,800	508,200
WDRQ/Detroit	2.1	19	1.7	22	453,900	402,800
WYCD/Detroit	5.0	6t	4.4	10	787,200	733,000
WPAW/Greensboro	6.5	5t	7.2	4	272,700	269,700
WTQR/Greensboro	6.8	4	6.2	6	327,200	286,200
WWYZ/Hartford	7.3	3	8.2	2	230,800	229,300
KILT/Houston	3.9	10	3.1	14	1,006,000	865,500
KKBQ/Houston ^	5.0	7	5.1	5t	1,163,900	1,080,500
KTHT/Houston ^ +	1.9	20	2.1	20t	567,800	500,500
WFMS/Indianapolis	6.9	3	6.8	2	297,400	294,000
WLHK/Indianapolis	7.0	2	6.5	6	343,500	314,000
WGNE/Jacksonville	5.5	7	5.4	7	272,800	260,700
WMUV/Jacksonville	1.8	15	1.7	15	102,400	100,200
WQIK/Jacksonville	7.5	1t	7.7	2	274,300	250,800
KBEQ/Kansas City ^	3.9	13	4.3	11	329,300	304,500
KFKF/Kansas City ^ (flipped to all-Christmas Nov. 27)	7.2	1	7.0	2	365,000	368,800
WDAF/Kansas City	4.3	10	5.8	4	328,400	351,400
KCYE/Las Vegas	3.6	10t	3.5	10	174,700	178,200
KWNR/Las Vegas	2.4	16t	2.4	18	189,300	176,900
KKGO/Los Angeles	2.0	22	2.1	22t	922,600	1,017,800
WEBL/Memphis	1.4	17	1.5	17	99,600	97,700
WGXX/Memphis	4.6	9	4.5	9	225,700	199,600
WLFP/Memphis (flipped to Country 9/26)	1.1	18	1.3	18	98,800	95,500

Station/City	November 6+ Share	Rank	December 6+ Share	Rank	November Cume	December Cume
WKIS/Miami	2.8	17t	2.7	18	460,000	463,400
WNSH/New York (Middlesex)	3.8	10	3.1	12	163,500	151,200
WMIL/Milwaukee	10.7	1	10.2	1	447,800	449,600
KEEY/Minneapolis	6.4	4t	7.4	3	687,800	735,200
KMNB/Minneapolis	6.3	6	6.3	6	714,000	656,900
WKDF/Nashville ^	5.2	9	5.3	8t	293,700	285,100
WSIX/Nashville	4.0	10	4.3	10	268,500	262,300
WSM-FM/Nashville ^	5.6	7	5.3	8t	286,000	281,800
WSM-AM/Nashville	1.3	18	1.5	17t	49,400	50,100
WNSH/New York (Nassau)	1.4	24t	1.2	25	133,800	139,500
WNSH/New York	1.8	20	1.5	19t	840,100	815,300
WGH/Norfolk	6.6	3	6.3	3	278,000	276,000
WWKA/Orlando	6.5	1	6.3	1t	332,300	293,700
KMLE/Phoenix	4.3	8	3.3	10	620,500	608,700
KNIX/Phoenix	4.6	5t	4.2	7	598,700	614,400
WXTU/Philadelphia	5.5	4	4.8	8	840,700	769,900
WDSY/Pittsburgh	5.5	6	4.9	6	428,700	397,900
WPGB/Pittsburgh	3.1	11	3.3	11	287,300	257,300
KWJJ/Portland	5.4	5	5.5	5	439,800	422,100
KUPL/Portland	5.0	6	4.1	8t	408,700	385,900
WCTK/Providence	7.6	3	8.0	2	338,200	345,300
WNCB/Raleigh	3.5	11	3.1	12	196,700	179,800
WQDR/Raleigh	11.4	1	9.4	1	320,200	312,800
KFRG/Riverside	3.3	7	3.3	7	280,100	275,400
KBEB/Sacramento	2.1	19	2.0	18	206,900	180,700
KNCI/Sacramento	4.0	8	4.3	8	314,400	319,400
KNTY/Sacramento	3.0	12t	2.9	13	263,500	234,800
KEGA/Salt Lake City	1.5	20t	1.4	20t	200,900	171,600
KSOP/Salt Lake City	4.6	7	4.2	7t	271,000	263,600
KUBL/Salt Lake City	4.3	10t	3.8	11	338,500	312,900
KAJA/San Antonio	5.8	3	6.4	2	149,600	568,600
KCYX/San Antonio ^	5.9	2	6.2	3	546,300	548,200
KKYX-AM/San Antonio ^ +	1.9	18	2.0	18	149,600	127,100
KSON/San Diego	5.3	1t	5.2	3	486,700	455,000
KRTY/San Jose	3.5	9	3.1	12	168,100	147,100
KKWF/Seattle	4.9	4t	4.7	5	604,300	558,500
KMPS/Seattle	3.1	16t	3.4	13	554,800	502,400
KSD/St. Louis	4.9	9	4.6	13	572,000	523,000
WIL/St. Louis	5.8	4t	6.5	1	549,000	585,500
WFUS/Tampa	4.6	8t	4.5	9	474,800	481,500
WQYK/Tampa	5.3	3t	5.1	5	445,000	417,900
WMZQ/Washington	3.4	13t	3.7	10t	666,400	708,900
WIRK/West Palm Beach	5.3	3	5.8	3	208,600	214,600

Seek & Employ

Here's our annual listing of job seekers and open gigs. Not listed? Send info to news@countryaircheck.com and we'll include you in a January update.

Available Jobs

PD/Mornings: Dignity **KMKT/Sherman, TX.** Resume, aircheck and mission statement to consultant Joel Raab [here](#).

PD/Mornings: Small market start-up. Materials to consultant Joel Raab [here](#).

Nights: JVC WOTW/Orlando. MP3s and resumes to PD Shadow [here](#).

Brand Mgr./Afternoons: Midwest **WDEZ/Wausau, WI.** Aircheck, cover letter, resume and references to OM Derek Moran [here](#).

APD/Afternoons: iHeartMedia **WAMZ/Louisville.** Apply [here](#).

APD/MD/Afternoons: Beasley **KCYE/Las Vegas.** Three to five years on-air and MD experience are required. Airchecks and resumes to PD Kris Daniels [here](#).

Mornings: Cumulus **KSCS/Dallas.** Airchecks and resumes to OM/PD JR Schumann [here](#).

Mornings: CBS Radio **KILT/Houston.** Apply [here](#).

Mornings: Hubbard **WIL/St. Louis.** Airchecks and resumes to PD Greg Mozingo [here](#).

Mornings: Journal **WCYQ/Knoxville.** Apply [here](#).

Mornings: Mid-West Family **WRTB/Rockford, IL.** Resumes and airchecks [here](#).

Mornings: **Shane Media** privately owned client Country station in Odessa-Midland, TX. Resume and aircheck [here](#).

Morning Co-host: iHeartMedia **WUSY (US101)/Chattanooga, TN,** joining Ken & Daniel. Apply [here](#).

Morning Co-host: Cumulus KBUL/Reno. Airchecks and resumes [here](#).

Morning Show Producer: CBS Radio's **WDSY/Pittsburgh.** Apply [here](#).

Nights: Top 30 SE Market. Materials to consultant Joel Raab [here](#).

Nights/Production: JVC **WTRS/Ocala, FL.** Resume, aircheck and production samples [here](#).

Full/Part-time On-Air: Cumulus/Nashville. Minimum five years full-time experience. Airchecks and resumes to OM Charlie Cook [here](#).

Searching

John Alexander
VP Strategic Marketing & Artist Management (managed Sarah Darling); 615-480-8121, john@alexandermgmt.com.

Steve Austin
Former afternoon personality at Beasley's **WQYK/Tampa**; 813-363-9145, Staxis98@tampabay.rr.com.

Lexi Cothran
Former intern at Mediabase/Premiere Networks; 615-519-2216, lexicothran@yahoo.com.

Kelly Dean
New Heartland Group Coord./Accounts; 224-456-3957, kellydean1908@gmail.com

"Big Shoe" Stu Evans
Former KMLE/Phoenix afternoon personality; bigshoestu@cox.net.

Vicky Fisher
Freelance country music blogger/journalist based in the UK; (+44) 7947764129, vicky@forthecountryrecord.com.

Aaron Harris
Freelance Digital Strategist; 731-225-4935, about.me/aaronsharris, aaron.harris@me.com.

"Big John" Horton
Former afternoon personality at KOMS/Ft. Smith, AR; 918-649-1462, bigjohn@thebigjohnshow.com.

Adam Jeffries
Former PD/afternoon personality at Momentum's KJUG/Visalia; 661-204-1050, promoadam@yahoo.com.

Penny Lazo
Marketing and promotion vet; 469-855-0986, Pennylazomusic@gmail.com.

Sloane Cavitt Logue
Former Dir./Digital Marketing at Show Dog-Universal; 615-717-5671, sloanecavitt@gmail.com.

Wayne Manning
Former Dir./Regional Promotion at Cold River; 801-361-2993, imaviator@yahoo.com.

Natalie Moore
Former Dir./Artist Development & Creative Services at Show-Dog Universal; natalie.mooremusic@gmail.com

Abbe Nameche
Publishing, A&R and management vet; 615-429-8501, abbenameche@gmail.com.

PJ Olsen
Former Dir./Research & Information Systems at Show Dog-Universal; 615-243-0130, peejolsen@comcast.net.

Chuck Schultz
Freelance writer, contract radio promoter; 716-901-6812, <https://chuckschultz.contently.com>, malone.entertainment@gmail.com

Jeff Singer
Former OM/mornings at DMC/Santa Fe-Taos, NM; 575-770-4431, jeffsingershow@yahoo.com

Jason Turner
Former VP/Radio Services at Nashville production studio **The Hot Seat**; turner.radio@gmail.com.

Tyler Waugh
Former Dir./National Promotion at Streamsound; 615-870-2040, promotylawaugh@gmail.com.