

# 2017 COUNTRY AIRCHECK Weekly

HAPPY NEW YEAR

December 29, 2016, Issue 531

## RCA's Gale To Manage Owen

RCA SVP/Promotion **Keith Gale** will leave his label home of more than 22 years on Jan. 4 to join RCA artist **Jake Owen** and Owen's Dir./Tour Marketing & Sponsorships **Jon Andolina** in forming a new management company to guide Owen's career, with Gale as Owen's manager. The new management company's name and the booking agency that will be working with Owen going

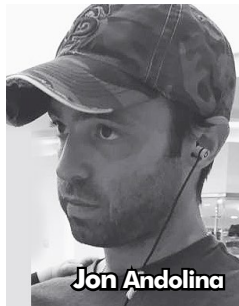


Keith Gale



Jake Owen

forward will be announced shortly after the New Year. For more than a decade, Owen's management and booking have been handled by Morris Higham Management. Gale was WXTU/Philadelphia Dir./Promotion when he joined RCA for NE



Jon Andolina

Promotion in Aug. 1994. He rose through the promotion ranks, being elevated to Dir./National Promotion in Sept. 1997, Sr. Dir. in May 1999, VP in 2006 and promoted to SVP in Dec. 2012. Gale can be reached at Sony [here](#) until Jan. 4. No word from Sony Music Nashville on plans to fill Gale's post.



**Check Pleased:** KYGO/Denver staff and volunteers celebrate a successful Country Cares for St. Jude Kids Radiothon, which brings the station's total for 2016 to \$518,752.

## RMLC & GMR: Not So Rate

As Christmas Eve exchanges go, the interim agreement between the **Radio Music License Committee** and Irving Azoff's performing rights organization **Global Music Rights** falls into the awkward category. The good news is broadcasters have until Jan. 31 to sign an interim license covering GMR

©2016 Country Aircheck™ — All rights reserved. Sign up free at [www.countryaircheck.com](http://www.countryaircheck.com). Send news to [news@countryaircheck.com](mailto:news@countryaircheck.com)

# Brothers Osborne

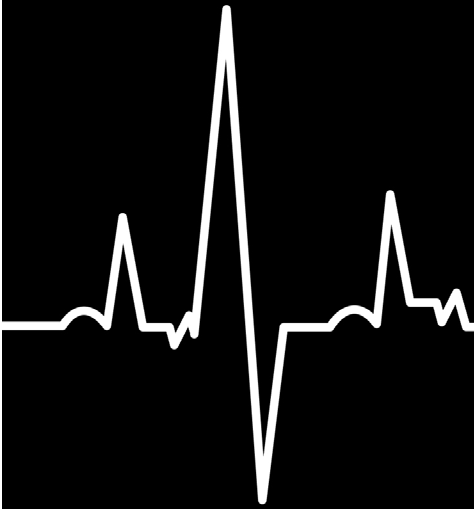
## "IT AIN'T MY FAULT"

From the Grammy-nominated

### CMA DUO OF THE YEAR!

ADD JANUARY 17TH!

**JAN 23**





**COUNTRY AIRCHECK**  
**MY TUNES: MUSIC THAT SHAPED MY LIFE**



**Evan Harrison**

Tortuga Music Festival/Huka Entertainment CEO **Evan Harrison** discusses his most influential music:

**1. Beatlemania on Broadway:** I was eight or nine. It was like seeing the Beatles – insane. I knew the songs, the music was loud and raw (different than the records) and everyone was standing on their seats, singing, screaming ... smoke in the air. The energy and feeling was incredible.

**2. Rolling Stones' Tattoo You:** This album came out when I was 11. We listened to it in the car on family trips and when we were doing chores. My uncle had a huge vinyl collection. It was at this age I started to think about group dynamics.

**3. U2's The Unforgettable Fire Tour:** I was 14 and went to see them at Madison Square Garden right as they were starting to break big in the U.S. – fell in love.

**4. Ramones at the Ritz in NYC, 1987:** They went on at midnight. One and a half hours of pure energy and sweat with no breaks. I probably saw the Ramones 50+ times after this show.

**5. Outkast and A Tribe Called Quest:** I worked at BMG and we released so many amazing records, but watching these guys develop opened me up to a whole new world.

• **Highly regarded music you've actually never heard:** Because I've spent my life in music, I listen to everything at least a little. But I'd say Frank Ocean is the most recent highly regarded artist I've spent the least amount of time listening to.

• **"Important" music you just don't get:** Opera. I appreciate the incredible skill but I just can't.

• **An album you listened to incessantly:** Neil Young's *Harvest*. Neil's storytelling style (and Dylan too) turned me on to so many greats, from Cash to Prine to Willie to Hiatt.

• **Obscure or non-country song everyone should listen to right now:** "Brand New Love" by Sebadoh. The production may not appeal to everyone, but I think everyone could imagine their favorite performer singing this, and loving it.

• **Music you'd rather not admit to enjoying:** I make mixes to push me thru half-marathons, no real "guilt" in these pleasures, from TLC to Shaun Cassidy to Poison.

works through Sept. 30. Rates have not been disclosed, but the agreement allows for retroactive adjustments pending the outcome of ongoing litigation between the two entities or settlement.

Simultaneous statements found GMR attorney **Dan Petrocelli** slipping in a barb by noting, "GMR offered this license to the RMLC last month, but the RMLC refused it and, instead, chose to sue and seek an injunction. With today's agreement, the RMLC has withdrawn its request for an injunction and radio stations



across the country will have the opportunity to offer their listeners GMR's quality music." Meanwhile, RMLC Chair **Ed Christian** stuck with a just-the-facts approach.

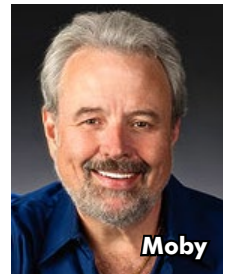
**iHeartMedia** and **Townsquare** already had deals with GMR, joined late last week by **Cumulus**, which



had previously warned stations they may have to remove GMR songs from their rotations beginning Jan. 1. In Country, GMR represents top songwriters **Shane McAnally** and **Luke Laird**, whose work includes Miranda Lambert's "Vice" and Luke Bryan's "Fast," respectively.

**Moby Retires**

Country Radio Hall of Famer **James "Moby" Carney** is signing off and shuttering the syndicated *Moby In The Morning* as of Friday (Dec. 30). Moby worked his way from small-town radio in Tennessee to stops in Nashville, Tampa, Houston and Dallas riding the "shock jock" wave. He settled in to a highly successful decade in mornings at WKHX/Atlanta, eventually syndicating that show before building his own network of stations from his home base in Roswell, GA. "It's been a great 12-and-a-half years doing an independent network that lots of folks told me wouldn't last six months," he tells **Country Aircheck**.



**Moby**

©2016 Country Aircheck™ — All rights reserved. Sign up free at [www.countryaircheck.com](http://www.countryaircheck.com). Send news to [news@countryaircheck.com](mailto:news@countryaircheck.com)

**Maren Morris**  
**80s MERCEDES**

**4 GRAMMY** Nominations including Best New Artist, Best Country Song, Best Country Solo Performance and Best Country Album.

**Most-nominated country artist at the 2017 GRAMMY Awards**

Watch her performance of "80s Mercedes" on Saturday Night Live here!





# KENNY CHESNEY



BAR AT THE  
END OF THE WORLD  
ON YOUR DESKS NOW  
IMPACTING IMMEDIATELY!





"Jerry Garcia said it best, I believe, 'What a long strange trip it's been.'" Reach him here.

### Where Credit Is Due

The **Media Rating Council (MRC)** is withholding accreditation for **Nielsen's** December 2016 PPM reports in 26 markets after 8% of installed meters lost connectivity during the first week of the December survey (CAT 11/10). "MRC believes the data analyses related to this incident with which we have been presented by Nielsen Audio, in addition to Nielsen Audio's responses to a series of questions related to the incident ... are incomplete," a statement reads.

Nielsen is standing by its data, however. "Following the PPM connectivity issue during week one of the December survey, Nielsen's Data Science team conducted a rigorous analysis of data quality and we firmly stand behind the December PPM monthly estimates," a company spokesperson says. "The sample performance for the December report is in line with the standards that have been used in prior months for the 26 accredited markets. While we disagree with the MRC's decision to withhold accreditation of the December PPM monthly data, Nielsen remains committed to the MRC accreditation process."

A subsequent statement from Nielsen reveals more about the cause of the connectivity problem. "We have isolated the issue to reboot logic in a subset of meters that were unable to connect to the collection server after multiple attempts," the company says. "We are testing a software update to the reboot logic and upon successful testing and review with the MRC, we plan to implement the fix by the end of Q1 2017."



### Betson Up In Frederick

**Aloha Station Trust/Frederick, MD**

Dir./Operations **Phyliss Betson** has been promoted to MM, responsibilities that include oversight of Country **WFRE**. She succeeds **Michael Banks**, who is leaving for an unspecified opportunity with Connoisseur Media. Betson has been with the group since 2001 and can be reached here.



## ADD DATES

**January 3**  
**KENNY CHESNEY**/Bar At The End Of The World (Blue Chair/Columbia)

**January 9**  
**BRETT YOUNG**/In Case You Didn't Know (BMLGR)

**January 17**  
**BROTHERS OSBORNE**/It Ain't My Fault (EMI Nashville)

**January 23**  
**MICHAEL TYLER**/They Can't See (Reviver)

ADVERTISEMENT iHeartMedia WNCB WTQR

Send yours to [adds@countryaircheck.com](mailto:adds@countryaircheck.com)

### Recapping Thursday's Update

- iHeartMedia **WNCB/Raleigh & WTQR/Greensboro PD Todd Nixon** has resigned and is seeking new opportunities. Nixon took the posts more than two years ago (CAT 3/7/14) from then-Clear Channel WCKT/Fort Myers & WCTQ/Sarasota, FL. Prior stops include KRMD/Shreveport, LA; WYCT/Pensacola, FL; WYZZ/Ft. Walton Beach, FL; WCTO/Allentown and KILT/Houston. He'll remain through the end of the year and can be reached here thereafter. No word on plans for the open position(s).

- iHeartMedia's decision to not to repay \$57.1 million of

©2016 Country Aircheck™ — All rights reserved. Sign up free at [www.countryaircheck.com](http://www.countryaircheck.com). Send news to [news@countryaircheck.com](mailto:news@countryaircheck.com)

**RUNAWAY JUNE LIPSTICK**

**TOP 30**

One of **ROLLING STONE'S BEST 25 Country Songs of 2016**

**GRANGER SMITH** IF THE BOOT FITS

**POWER UP NOW!**

**COUNTRY AIRCHECK #2 VIP NEW ARTIST OF 2016**

**BACKROADS SONG #6 MOST PLAYED SONG 2016**





# NEW MUSIC

## Nashville

DZWR	KAFF	KAJA	KALF	KARL	KARP	KATM							
KAUS	KBCY	KBEQ	KBLL	KBLP	KBOZ	KBRJ		KBUL	KBVC	KBXB	KCIN	KCLR	KCLV
KCOB	KCYN	KDMG	KDRK	KDRO	KDZY	KEOK	KEUN	KFGE	KFTZ	KFYN	KFYN	KGGL	KGKL
KGNC	KGVE	KHCM	KHEY	KHKC	KHOK	KHUT	KIIM	KIQK	KITX	KIXQ	KIYK	KJAE	KJNA
KJUG	KKAJ	KKCB	KKOA	KKRV	KKXX	KKYR	KLAW	KLBC	KLLL	KMAG	KMIT	KMOK	KMON
KMOO	KMPS	KMTB	KMTS	KNCI	KNCU	KNEM	KNID	KNLE	KNMO	KNNU	KNTY	KOKR	KOLK
KORD	KOXE	KPLM	KQFC	KRJC	KRKT	KRNY	KRRV	KRSB	KRST	KSJQ	KSNI	KSON	KSQQ

## celebrating it's 1,000th show!

KSSN	KSYC	KTAK	KTFX	KTRA	KTST	KUBL	KUST	KVAY	KVOK	KV00	KWCD	KWGO	KWHQ
KWHT	KWIQ	KWOZ	KWUT	KXAX	KXKS	KXXK	KXXK	KYEZ	KYSM	KYSS	KYYZ	KZEN	KZUA
WAAC	WAAG	WAAO	WADI	WATZ	WAWC	WBBS	WBGK	WBMH	WBUG	WBYG	WBYZ	WCCQ	WCJM
WCMS	WCOS	WDBS	WDHR	WDXB	WEGX	WEPG	WFGF	WFGI	WFLE	WFLE	WFRB	WFRE	WFUS
WGGC	WGGE	WGNA	WGSQ	WHKX	WHMA	WHWK	WIBL	WIFE	WIL	WILQ	WJCL	WJJM	WJNV
WJOD	WKBQ	WKCC	WKDP	WKDQ	WKGA	WKIS	WKKW	WKKY	WKRX	WKSF	WKUL	WKWS	WKXC
WLAY	WLFZ	WLJE	WLWF	WLWI	WMCI	WMIL	WNAX	WNCQ	WNCY	WNOE	WOGI	WOKO	WOVK
WPAP	WPGW	WQCC	WQDR	WQEB	WQHK	WQIK	WQZY	WRCV	WSAQ	WSDQ	WSIX	WSOC	WTHI
WTQR	WTRS	WUBE	WUCZ	WUPY	WVRQ	WVVI	WWFY	WWGY	WVOF	WVOJ	WWWV	WWYZ	WWZD
						WXTA	WYNK	WYTZ	WYYD				



Host, Bob Guerra

**We're proud and pleased to have played over 12,000 of Country Music's Biggest Hits over the last 9 years!**

**Our most sincere thanks to the hundreds of Top Country Stations in America, past and present, who have made this all possible.**

**Now lets get started on the next 1,000 shows and see where life takes us.**

Please contact our affiliations manager  
 Chuck Mann at [chuck.mann@newmusicnashville.com](mailto:chuck.mann@newmusicnashville.com)

its 5.50% senior notes due recently (CAT 12/13) has been ruled a "failure to pay credit event" by the **International Swaps and Derivatives Association**, according to the *San Antonio Express-News*. The decision isn't expected to have an immediate impact on iHeartMedia's balance sheet, but may be a sign of the company's declining financial health. More here.



Todd Nixon

- **Nielsen Audio** will expand sample size by 10% across its 48 PPM markets in mid-2017, an increase of 6,000 panelists distributed proportionately across all demographics. Nielsen is also working to leverage recently acquired metadata

company **Gracenote** to expand measurement of in-car and digital listening. More here.

- **Frankie Ballard** raised more than \$40,000 for the FTL Sarcoma Fund («For The Linds») last weekend, performing two sold-out shows at the State Theater in Kalamazoo, MI.

**Milestones**

**Kelsea Ballerini** got engaged to Australian artist **Morgan Evans** Dec. 26.

**Kacey Musgraves** got engaged to fellow artist **Ruston Kelly** Dec. 24.

**Ashley Monroe** and husband **John Danks** are expecting their first child.

Dan + Shay's **Shay Mooney** and fiancée **Hannah Billingsley** revealed they're expecting a boy, **Asher James Mooney**.

Love And Theft's **Stephen Barker Liles** and wife **Jenna** revealed the gender of their second child yesterday (12/26) via a video here.

Songwriter **Andrew**



Kelsea Ballerini

**Dorff** died Dec. 19 at age 40.

Comedian and broadcast personality **Gordie Tapp** died Dec. 18 at age 94.

**News & Notes**

*The Country Music Greats Radio Show* is relaunching as *Pure American Country* Jan. 2. WSM-AM/Nashville's **Bill Cody** hosts, and the show is shifting its focus to '80s, '90s and today's country. In syndication since 2003, find out more about the show here.



Bill Cody

Cumulus' **WSOM-AM/Youngstown, OH** flipped out of Christmas music into **Westwood One's** Classic Country format Dec. 26.

The Randy Rogers Band's **Randy Rogers** will play an acoustic set at the Black Tie and Boots 2017 Presidential Inaugural Ball Jan. 19 in Oxon Hill, MD. B&R/Thirty Tigers/New Revolution's **Big & Rich** will headline the **RIAA's** second annual inaugural fundraiser benefiting **Musicians On Call**. The show will be held at the 9:30 Club in Washington, DC Jan. 20.

Speaking of Randy Rogers, he and **KRR Entertainment** became the official owners of the **Cheatham Street Warehouse**, a legendary venue in San Marcos, TX, Dec. 20.

An encore presentation of the **50th Annual CMA Awards** will air Jan. 1 at 8pm ET on **AXS-TV**.

**Lon Helton**, [lon@countryaircheck.com](mailto:lon@countryaircheck.com)

**Chuck Aly**, [chuck@countryaircheck.com](mailto:chuck@countryaircheck.com)

**Russ Penuell**, [russ@countryaircheck.com](mailto:russ@countryaircheck.com)

**Wendy Newcomer**, [wendy@countryaircheck.com](mailto:wendy@countryaircheck.com)

(615) 320-1450

©2016 Country Aircheck™ — All rights reserved. Sign up free at [www.countryaircheck.com](http://www.countryaircheck.com). Send news to [news@countryaircheck.com](mailto:news@countryaircheck.com)

**ERIC CHESSER**

**HAPPY NEW YEAR**

Happy New Year 2017 to everyone  
in Country Music Radio!

**BIG BIG**  
Records Nashville





# SEEK & EMPLOY

## Available Jobs

Here's a list of job seekers and open gigs. Not listed? Send info [here](#) and we'll include you in a future update.

Scrapps' **WKTI/Milwaukee** is searching for a PD/afternoon. Apply [here](#).

**Townsquare/Duluth, MN** has an opening for a GM. Apply [here](#). CBS Radio's **WUSN/Chicago** has an opening for a PD.

Apply [here](#).

Mid West Family's **WRTB/Rockford, IL** is searching for an afternoon personality. Reach **Steve Summers** about the position, which includes imaging duties, [here](#).

West Virginia Radio's **WKWS/Charleston, WV** has an opening for a PD/air personality. Materials to MM **Bob Visotcky** [here](#).

Beasley's **WKLB/Boston** has an opening for a morning show host. Airchecks and resumes to PD **Mike Brophay** [here](#).

**Zimmer/Cookeville, TN** is searching for an engineer. Three years experience is required. Materials [here](#).

Leighton's **KZPK/St. Cloud, MN** has an opening in evenings. Airchecks, resumes and social media links [here](#).

Beasley's **WKML/Fayetteville, NC** is searching for an MD/morning co-host. Materials to PD **Dean Severance** [here](#).

W&B's **WLVK/Elizabethtown, KY** is searching for an APD/MD/afternoon. Materials to Owner/GM **Rene Bell** [here](#).

**Townsquare/Amarillo, TX** has an opening for an OM and Top 40 PD. Materials to Market President **Brice Sheets** [here](#).

iHeartMedia's **WEBG/Chicago** has an opening for a Dir./Promotions. Apply [here](#).

Adams' **WBTU/Fort Wayne, IN** has an opening for an APD/middayer. Materials to PD **Randy Alomar** [here](#).

Bristol's **WXBQ/Johnson City, TN** has an opening on the morning show. Materials [here](#).

Cumulus' **WSJR/Wilkes-Barre** has an opening for a PD/afternoon personality. Apply [here](#).

Steel City's **KBEQ/Kansas City** has an opening for a PD. Materials [here](#).

Zimmer's **KCLR/Columbia, MO** has an opening in middays. Airchecks and resumes [here](#).

Cumulus' **WMDH/Muncie, IN** is searching for a PD/afternoon personality. Apply [here](#).

Renda's **WGNE/Jacksonville** has an APD/MD/midday opening. Materials to OM **Chuck Beck** [here](#).

**Cumulus/Lexington** has an opening for PD of Country combo **WLXX & WVLK**. Apply [here](#).

Midlands' **WWNQ/Columbia, SC** has on-air openings for all dayparts. Airchecks and resumes to Managing Partner/Programming & Operations Keith Clark [here](#).

Townsquare's **WOKQ/Portsmouth, NH** has an opening for an air talent. Airchecks and resumes to OM **JC Coffey** [here](#).

AJG's **WKKW/Morgantown, WV** has an opening for a morning host. Materials [here](#).

Cox's **KCYX/San Antonio** has an opening in afternoons. Three years of experience is required. Apply [here](#).

Curtis' **WQDR/Raleigh** has an opening for a Dir./Promotions. Materials including a cover letter and salary history to Dir./Human Resources **Nancy Ginger** [here](#).

CBS Radio's **KILT/Houston** is searching for an evening talent. A minimum of two years experience is required along with "the swagger to be Houston's only local Country night show." Apply [here](#).

Cumulus' **WFMS/Indianapolis** is still searching for a «live and local» midday personality. Airchecks and resumes to OM/PD **Stephen Giuttari** [here](#).

CBS Radio's **KNCI/Sacramento** has an opening for a PD. At least five years programming experience is required and a four-year degree in a related field is preferred. Apply [here](#).

## Searching

### • Todd Nixon

Departing WNCB/Raleigh, WTQR/Greensboro PD [toddnixonradio@gmail.com](mailto:toddnixonradio@gmail.com)

### • Jeff Kapugi

Former CBS Radio VP/Country, WUSN/Chicago PD [jeffkapugi@gmail.com](mailto:jeffkapugi@gmail.com)

### • Wes McShay

Former Cumulus/Montgomery, AL OM/PD 208-758-5435 [wesgardipe@gmail.com](mailto:wesgardipe@gmail.com)

### • Derek Gunn

Former Stoney Creek regional and KBUL/Reno, NV PD [GunnDerek@hotmail.com](mailto:GunnDerek@hotmail.com)

### • Jeff Miles

Former **WKLB/Boston** morning host [radiojeff@icloud.com](mailto:radiojeff@icloud.com)

### • Jessilyn Kidd

Former Huntsman Entertainment Asst./Production & Coord. Social Media [jessilynnkiddmusic@gmail.com](mailto:jessilynnkiddmusic@gmail.com)

### • Chappel Fisher

Formerly middays at WZZK/Birmingham [djonair@aol.com](mailto:djonair@aol.com)

### • Brian Rickman

Former Townsquare/Tyler, TX OM/PD [brian.c.rickman@gmail.com](mailto:brian.c.rickman@gmail.com)

### • Rosey Fitchpatrick

Former SSM Dir./National Promotion [Roseyfitch99@gmail.com](mailto:Roseyfitch99@gmail.com)

### • Wayne Manning

Former Cold River Regional 801-361-2993 [imaviator@yahoo.com](mailto:imaviator@yahoo.com)

### • Doug Montgomery

Former **iHeartMedia/Grand Rapids** SVP/Programming, Premium Choice PD and iHeartCountry Brand Coord. [dougmontgomery@icloud.com](mailto:dougmontgomery@icloud.com)

### • Kristen Kee

Former **Sony/Nashville** Mgr./Marketing [kristen.kee@gmail.com](mailto:kristen.kee@gmail.com)

### • Hannah Martin

Former **ACM** Lifting Lives Manager [hnmartin21@gmail.com](mailto:hnmartin21@gmail.com)

### • Cassidy Stewart

Former **Hart Media/Bullseye** Dir./Promotions & Content [kassidy@goncc.com](mailto:kassidy@goncc.com)

### • Kelley Cash

Former **KVOO/Tulsa** personality [kelleycashradio@gmail.com](mailto:kelleycashradio@gmail.com)

### • Brian Hatfield

Former **KYGO/Denver** APD/MD [brianhat@aol.com](mailto:brianhat@aol.com)

### • Rick Kennis

Former **WGTY/York, PA** Dir./Promotions [rick@rickkennis.com](mailto:rick@rickkennis.com)



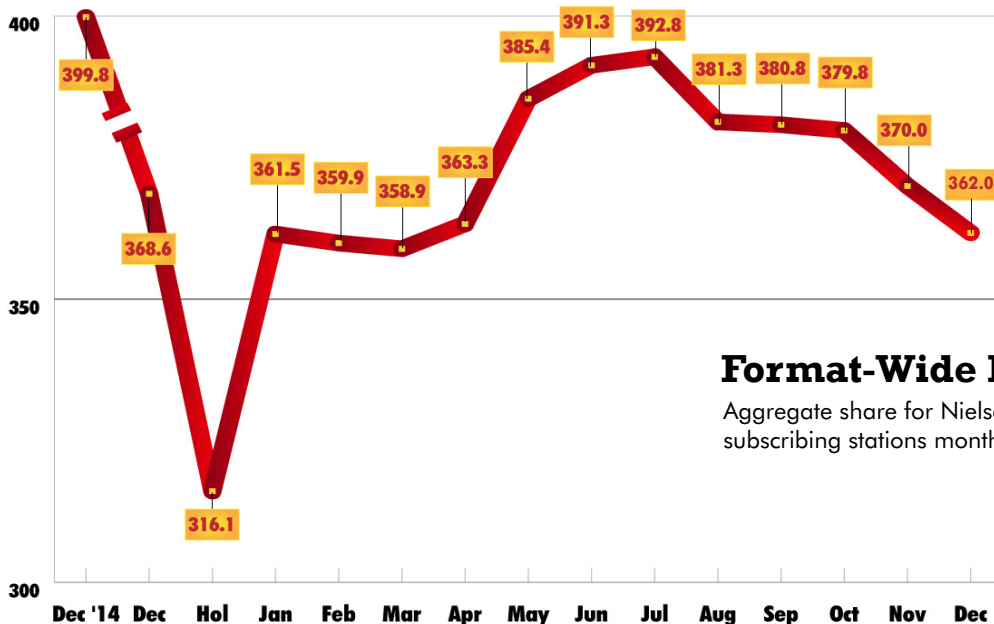
# December 2016 PPM Scoreboard

Country radio shares were down by 2.2% compared to last month and down 4.5% compared to December 2015. Of the 87 subscribing stations listed, 29 increased, 54 decreased and four were flat.

The cume leader was Cumulus' **KPLX/Dallas** with 1,194,800. Mt. Wilson's **KKGO/Los Angeles** was second with 1,154,200.

Legend: A "+" indicates a Classic Country outlet; a "^" designates co-owned Country stations in the metro; "t" indicates a tie; and a "\*" indicates a station best in that statistic. Ranks are among subscribers.

Station/City	November 6+ Share	Rank	December 6+ Share	Rank	November Cume	December Cume	Station/City	November 6+ Share	Rank	December 6+ Share	Rank	November Cume	December Cume
WKHX/Atlanta	3.7	11t	4.0	11	582,000	664,700	WNSH/New York (Middlesex)	3.0	16	3.5	11t	161,400	169,000
WUBL/Atlanta	3.1	15	3.2	14t	606,200	636,900	WKTI/Milwaukee	3.0	13	3.7	13	249,600	278,100
KASE/Austin ^	5.0	6	4.9	6	330,300	326,200	WMIL/Milwaukee	5.6	7	5.1	9	377,000	368,600
KVET/Austin ^	6.3	3	6.2	4	351,200	342,400	KEEY/Minneapolis	5.1	10	5.2	8	637,400	620,300
KOKE/Austin	2.0	18	2.1	18	108,000	124,600	KMNB/Minneapolis	3.9	13	3.6	13	606,700	555,500
WPOC/Baltimore	6.9	4	6.3	4	482,200	465,500	WKDF/Nashville ^	3.3	14	3.7	12t	257,400	248,600
WKLB/Boston	4.4	7	4.1	9	727,300	683,300	WSHX/Nashville	4.7	10	5.0	9	259,600	277,000
WBWL/Boston	2.1	18	2.3	18	460,400	447,300	WSM-FM/Nashville ^	5.6	8	5.5	7	301,100	292,800
WCTK/Providence (Boston)	0.6	23	0.5	23	131,200	128,800	WSM-AM/Nashville	2.2	15t	2.1	16	61,500	43,400
WKKT/Charlotte	5.5	4	5.2	6t	471,600	448,400	WNSH/New York (Nassau)	2.0	21	2.2	19	160,400	173,100
WSOC/Charlotte	7.6	1	6.8	2	450,500	435,500	WNSH/New York	1.9	19	1.9	19	1,073,100	1,049,800
WEBG/Chicago	2.0	24	2.1	21t	861,400	840,700	WOTW/Orlando	1.2	18	1.8	15t	117,900	135,900
WUSN/Chicago	2.2	19t	2.1	17t	1,080,400	976,000	WWKA/Orlando	5.0	9	4.9	9	289,200	283,500
WNNF/Cincinnati	2.1	15	2.0	14	282,900	260,400	KMLE/Phoenix	4.0	8t	3.9	7t	614,200	562,200
WUBE/Cincinnati ^	7.9	3	6.3	4t	482,700	461,000	KNIX/Phoenix	3.8	10	3.4	11t	682,300	620,500
WYGY/Cincinnati ^	1.0	18t	0.9	16t	134,700	128,600	WXTU/Philadelphia	4.3	8	4.0	8t	799,600	787,400
WGAR/Cleveland	7.7	3	7.9	3	445,900	453,100	WDSY/Pittsburgh	6.1	6	5.7	6	391,200	368,700
WCOL/Columbus, OH	10.2	1	8.2	1	419,400	406,700	WPGP/Pittsburgh	4.2	10	3.8	10	274,600	250,400
KPLX/Dallas ^	5.7	1	5.2	3	1,313,500	1,194,800	KWJJ/Portland	4.7	7t	4.8	5	416,500	403,800
KSCS/Dallas ^	3.6	9t	3.2	11t	1,061,700	1,014,000	KUPL/Portland	4.9	6t	4.6	7t	456,200	383,900
KWOF/Denver	1.7	20t	1.6	21	235,400	224,000	WCTK/Providence	7.7	4	7.3	4	366,400	347,000
KYGO/Denver	5.6	3t	5.8	3	535,200	537,900	WNCB/Raleigh	3.2	14	3.0	14	252,600	238,000
WDRQ/Detroit	3.3	13t	3.1	15	521,300	499,100	WQDR/Raleigh	7.0	5	7.1	1	397,700	366,800
WYCD/Detroit	5.0	8	4.6	9	789,500	772,700	KFRG/Riverside	3.6	6	3.9	6t	326,700	329,100
WPAW/Greensboro	5.1	6	5.2	6	240,800	240,300	KBEB/Sacramento	2.8	12t	2.1	16t	239,700	217,500
WTQR/Greensboro	5.4	5	5.1	7	281,300	278,200	KNCI/Sacramento	5.6	5	5.5	4	369,500	340,100
WWYZ/Hartford	7.8	3	8.2	3	266,400	255,700	KNTY/Sacramento	2.3	17t	1.9	18	186,800	197,200
KILT/Houston	3.6	11	4.0	9t	1,055,000	1,025,800	KEGA/Salt Lake City	1.4	21	1.4	22	191,000	185,500
KKBQ/Houston ^	4.9	6	4.3	7t	1,146,700	1,152,600	KSOP/Salt Lake City ^	4.3	9	4.3	7t	280,600	282,600
KTHT/Houston ^ +	2.9	10t	2.8	17	624,700	618,600	KSOP-AM/Salt Lake City ^ +	1.2	24	1.0	24	57,200	44,500
WFMS/Indianapolis	6.5	4	7.0	4	352,900	344,300	KUBL/Salt Lake City	4.6	8	3.8	10	362,800	339,200
WLHK/Indianapolis	5.3	8	5.1	7	361,600	317,400	KAJA/San Antonio	5.6	4	5.4	5	631,900	576,500
WGNE/Jacksonville	5.3	7	4.8	7	253,300	248,900	KCYX/San Antonio ^	7.1	2	5.8	3	663,000	646,900
WQIK/Jacksonville	6.8	5	11.3	1	281,000	277,200	KKYX-AM/San Antonio ^ +	1.3	21t	1.3	21t	148,600	149,200
KBEQ/Kansas City ^	3.5	13t	4.1	11t	267,200	292,700	KSON/San Diego	4.8	5	4.6	7t	439,200	409,100
KFKF/Kansas City ^	4.9	6	4.3	7t	334,600	310,400	KRTY/San Jose	3.7	8t	3.6	8t	179,400	189,500
WDAF/Kansas City	3.5	13t	3.7	13	299,400	287,700	KKWF/Seattle	3.0	15t	2.8	16t	448,600	425,900
KCYE/Las Vegas	2.5	15t	3.0	14t	219,700	195,200	KMPS/Seattle	4.1	6t	4.0	7	523,100	542,300
KWNR/Las Vegas	5.0	3	4.7	3	284,800	283,700	KSD/St. Louis	3.6	16	3.9	15	485,300	487,800
KKGO/Los Angeles	2.3	17t	2.1	18t	1,297,300	1,154,200	WIL/St. Louis	5.5	6	4.9	9	537,500	480,300
WGKX/Memphis	5.1	9	4.4	8t	224,300	200,100	WFUS/Tampa	5.1	5t	5.3	4	500,300	524,200
WLFP/Memphis	2.9	12	3.4	11	131,700	128,600	WQYK/Tampa	5.5	4	4.4	7t	486,200	457,900
WKIS/Miami	2.4	18	2.3	16	433,200	473,300	WMZQ/Washington	3.2	13	2.9	13t	513,000	512,200
							WIRK/West Palm Beach	4.6	7t	4.7	5	167,300	185,400



## Format-Wide PPM Ratings

Aggregate share for Nielsen Audio subscribing stations month to month.