

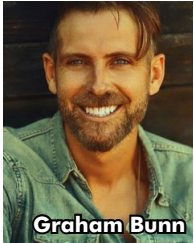
COUNTRY AIRCHECK

WEEKLY

May 23, 2022, Issue 808

Bunn Ramps Up On Amp

In March, **Amazon** launched the **Amp** app in beta testing form (CAT 3/8). Available only to those with a referral code or **Amazon Music** subscription, the app allows users to listen in on live shows or create their own utilizing the Amazon Music catalog. More than two months after launching his own *Country Grammar Radio* show via Amazon Amp (CAT 3/10), former Mt. Wilson KKGO/Los Angeles personality **Graham Bunn** tells **Country Aircheck** why he thinks this could be the next big thing.



Graham Bunn

"This platform feels like a hybrid of streaming and terrestrial radio, and I hope it continues to grow as a safe place for content creators to help listeners find new music and showcase the artists they love," says Bunn.

Go Ahead Caller: The difference in Amazon's platform and current shows and podcasts on Apple Music or Spotify is the social component. "We call it bringing an audience member to the stage," Bunn states. Those tuned in to the show can choose to participate in the conversation live on-air, make song requests and offer feedback. "I also get a lot of DMs during the show from people who are listening," says Bunn. "If they are too shy to speak on the Amp platform itself, I can still get their input on topics or song suggestions and give them a live shout-out."

The concept of social listening is similar to that of last year's hot app, **Clubhouse** (CAW 2/16/21). By building a fanbase and creating an engaging show, content creators can "amp" up their personal brand and grow their show on a social level. During the live show, hosts can also see who in their community is currently listening, which allows for interaction on a person-to-person basis. "Amp combines some of the wonderful things I've taken from radio with the freedom of creation," notes Bunn. His show airs weekdays from 6:30-9:30am PT.

"The Amazon Amp team has put together something in this beta launch that is easy to use, and I am able to create my own show each morning in a freeform way without sitting through daily meetings or waiting on a program director to clear me to play new music," Bunn explains.

(continued on page 7)



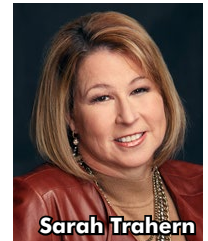
(Guitar) Pick Me Up: Warner/WAR's **Gabby Barrett** with radio partners at the Warner Music Nashville Mile High Guitar Pool Showcase in Denver. Pictured (back, l-r) are KRTY/San Jose's **Nate Deaton**, WSOC/Charlotte's **John Reynolds**, KAJA/San Antonio's **Alek Halverson**, KATC/Colorado Springs' **Bo Jaxon**, KYGO/Denver's **Brian Michel**, iHeart's **Michael Jordan**, iHeartMedia/Denver's **JoJo Turnbeaugh**, KCCY/Colorado Springs' **Shawn Patrick** and the label's **Michael Chase**; (front, l-r) the label's **Anna Cage** and **Kristen Williams**, KNIX/Phoenix's **Lois Lewis**, Barrett, the label's **Cris Lacy**, WUSN/Chicago's **Marci Braun** and KUAD/Ft. Collins, CO's **Matt Sparx**.

Yee Haul – CMA Fest Is Back

Following a two-year postponement, **CMA Fest** returns to Nashville live and in-person June 9-12. CMA CEO **Sarah Trahern** offers **Country Aircheck** a preview:

CA: What were some of the major considerations when deciding whether to move forward this year?

ST: When we had to postpone in 2020 due to the pandemic, it was all ready to go. Artists were booked, vendors were contracted, tickets were sold ... only to have to dismantle it. We were a little nervous as we began planning again, but we were hopeful. Of course, we have been



Sarah Trahern

©2022 Country Aircheck™ — All rights reserved. Sign up free at www.countryaircheck.com. Send news to news@countryaircheck.com

KEITH URBAN

Top 5 Research!!!

WILD HEARTS

MAXIMUM AIRPLAY Starting May 29th

The Speed of Now World Tour 2022 dates HERE!!!

HR RECORDS Capitol A UNIVERSAL MUSIC COMPANY be

#1 MOST ADDED!

TYLER HUBBARD

5 foot 9

87 FIRST WEEK STATIONS!

KKBQ	MUSIC CHOICE	WUSN	KTEX	KILT	WWKA	KEEY	WFUS	
KYGO	WMZQ	WPOC	WBEE	KNIX	WGAR	KCYY	WKKT	WRNS
KAJA	WWYZ	WQYK	KSOP	KSD	WIL	KTST	WQMX	WMIL
WUBL	WCOL	KXKT	WAMZ	WUSY	WSSL	WKHX	WGTY	WQIK
WDXB	WSIX	WTQR	WBWL	KHEY	WKMK	KWNR	KRYS	WQDR
WWGR	WCOS	WBUL	KASE	KKIX	KSSN	WKML	WDSY	
WGNE	KCCY	KWBL	WKXC	WCKN	WTHT	KZSN	KRTY	
WEZL	KBEQ	KPLM	WDRQ	WAVW	WPGB	KXLY		
WOLF	WMAD	WRNX	WRBT	WUSJ	WXCX	WKDF		
KDRK	KCYE	KTGX	WKRO	WHEL	WNCB	WWQM		
WCTQ	WLFP	WXBQ	WJVC	KJUG	KTOM			

**“THIS IS A FREAKIN’ SMASH!
I WISH MY WIFE WAS 3
INCHES TALLER.”**

– BILLY KIDD (PD), WBEE

“F%ING WOW! NOW THAT
S%&@ IS COUNTRY!!!!!!!!!!!!!!
HUBS LIKES IT, DAUGHTER
LIKES IT, I LIKE IT! YES!!!”**

– CORY MYERS (MD), WWYZ

**“I’M NOT GOING TO MISS
THIS TRAIN.”**

– MARCI BRAUN (REGIONAL BRAND
MANAGER), AUDACY

**CLICK HERE FOR
UNOFFICIAL MUSIC VIDEO**





monitoring CDC trending numbers all year and working with state and local officials. It's exciting that live music is happening again around the country. We're particularly thrilled to be bringing *Fest* back to downtown Nashville and celebrating that special relationship between the artists and fans. That's what *CMA Fest* has been built on for 49 years now.

Did you encounter any hesitancy during the booking process?

Artists and their teams have been incredibly enthusiastic and receptive. We have more than 200 artists performing throughout the footprint, and there were even more that we didn't have space for this year. There were many others who could not do it this year due to other commitments, but that just means we got to get ahead on planning for *CMA Fest 2023*.

What has the fan reaction been? How are ticket sales compared to past years?

We hear daily from fans across the country and around the world about how excited they are to visit Nashville and be a part of the festival experience. It's been two years since we've all gathered, so the energy and excitement are palpable. In terms of ticket sales, many patrons requested rollovers, so out of the gate this year, we were dealing with limited inventory. I expect we'll have sold-out news soon.

What COVID-related guidelines and precautions can fans and those behind the scenes expect?

[They're] constantly evolving, so we've asked for patience and flexibility as we navigate during these ... unique times. We always follow guidelines and requirements of the venue, in addition to city and state requirements, artist/performer requests and TV union requirements. There aren't any public health mandates for the city or state at this time, so we encourage fans to follow general best practices and follow venue requirements for wherever they're enjoying the festival. Portions of the nightly stadium shows are taped for our *CMA Fest* TV special that will air on ABC later this summer. Everyone backstage will be tested prior to coming onsite, per [union] requirements.

Are there any new experiences, stages, etc. planned?

A few weeks ago, we announced *Riverside Retreat*: a new upgraded fan experience near the Chevy Riverfront Stage with mobile charging areas, access to shade and misting stations, yard games, air-conditioned restrooms and more. Fans who purchase *Riverside Retreat* access get exclusive, guaranteed entry to the Riverfront performances, which often reach capacity audiences. Another experience we're happy to offer this year is mobile ticketing. For the first time in *CMA Fest* history, every pass is accessed digitally. We've also curated a fun new line of merch, so every fan can take a part of *CMA Fest* home.

When building the stage lineups, how do you find the right "mix" of up-and-coming, established and legendary artists to appeal to an audience with such a wide range of ages?

Putting together the line-up is two-fold. On one hand, we have the various daytime stages across the festival footprint, plus nighttime concerts at Ascend Amphitheater. We work with booking partners and a group of key industry professionals from across the country genre to program the lineups for those stages. On the other hand, the nightly concerts at Nissan Stadium are filmed for TV with Robert Deaton as Exec. Prod. Planning the TV special is a year-round process. I'm pretty sure Robert is already looking ahead to next year's *50th CMA Fest* and what those TV moments will look like.

Did the organization's DEI efforts help identify any new opportunities for this year's festival?

What you'll see at *CMA Fest* this year is reflective of what is happening within the business. Our industry is becoming more diverse and more representative of our fanbase. We've nearly doubled the number of artists of color this year compared to 2019's festival. I'm a firm believer that there's a place for everyone within the big tent of country music.

Any surprises?

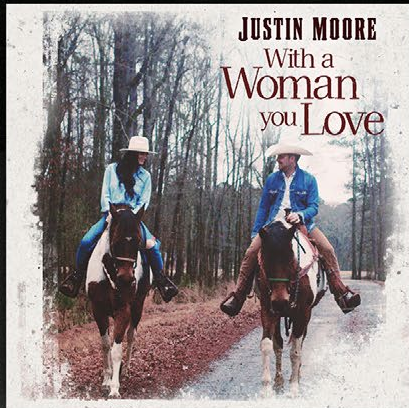
We definitely have a few surprises and unexpected collaborations up our sleeves. From surprises inside *Fan Fair X* and various moments throughout the footprint to unforgettable

MAX SPINS

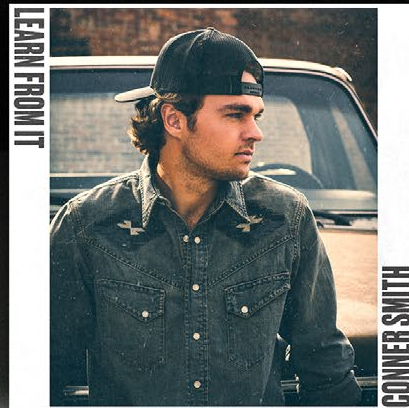
NOW THROUGH THIS SUNDAY



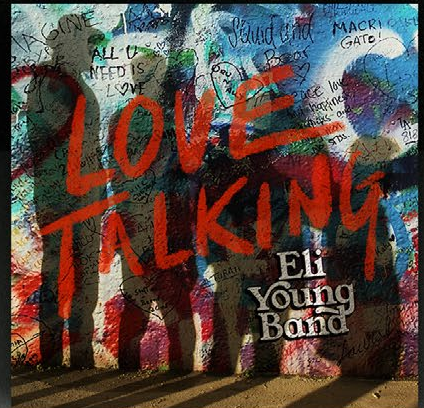
THOMAS RHETT SLOW DOWN SUMMER



**#17
AND CLIMBING!**



**TOP 40
AND CLIMBING!**

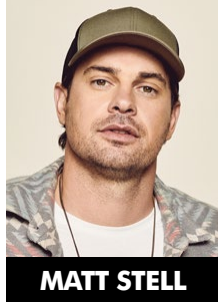


**Already #48
in BDS!**



OFF THE RECORD

Records' **Matt Stell** goes **Off The Record**: **The best parts of 2021-22** have been hitting the road again with my band and crew. There's nothing like playing music for people and everyone singing along. Could be a rowdy bar or an arena ... as long as we're rocking out playing country music and partying with people, it's gonna be the best time.



MATT STELL

The first time I heard myself on the radio (somewhere I don't live) was in Vegas. I got in an Uber, and "Prayed For You" was on the radio. I told the driver – I think her name might've been Sandy or something – that I was the one singing that song on the radio. Now, it's Vegas, so Sandy was used to dealing with crazy people. She was pretty sweet about it, but I don't think she believed me.

Sometimes you hear a song, and it hits you in a different way. That's how I felt when I heard "Man Made" for the first time. It has a lyric with a creative twist, which is one of my favorite things country music does. It also has a melody that makes me wanna hear it over and over. What really sets this song apart for me, though, is its positive energy. Usually, I gravitate towards heavier subjects, but this song has a way of getting across a positive message that is pretty unique, in my opinion. It's just a fantastic song, and I'm so glad I get to play it for people.

There is a long list of songs I wish I'd written, but "It's A Great Day To Be Alive" is definitely at the top of that list. Positive songs that hit hard are so difficult to write, but Darrell Scott nailed it. Travis Tritt also nailed singing it, too, of course.

My favorite song on the radio – any genre – might be "abcdefu" by Gayle. I personally think it's perfect. (Watch his rendition of the song [here](#).)

I'm currently bingeing Severance on Apple TV. It's a mind bender that starts kind of slow. Worth sticking with for sure, though. I also can't wait to watch the last season of *Better Call Saul!*

Country radio can expect a lot of new music and live shows from me. Also, some (subtly) hilarious social media [content](#).

appearances at the nightly stadium concerts, fans will be talking about CMA Fest 2022 for years to come.
–Caitlin DeForest

Chart Chat

Congratulations to **Jason Aldean, Lee Adams, Shelley Hargis Gaines, Renee Leymon** and the **Broken Bow** promotion team on landing "Trouble With A Heartbreak" at No. 1. This is Aldean's 27th career chart-topper and comes four days after the 16th anniversary of his first No. 1, "Why." Songwriters are **Brett Beavers, John Morgan, Kurt Allison** and **Tully Kennedy**.



Jason Aldean

Jumping from No. 26 to No. 18, **Kane Brown's** "Like I Love Country Music" becomes the first song to reach the Top 20 in three weeks since **Luke Combs' "Lovin' On You"** did in July 2020.

Kudos to **Jimmy Rector** and the **EMI Nashville** crew on notching 86 adds for **Tyler Hubbard's** label debut "5 Foot 9." Hubbard is also part of the biggest one-week add total in **Country Aircheck** history – "Undivided," a duet with **Tim McGraw** that had 152 adds Jan. 8, 2021.

Weights Watcher: The weight for **WGTY/York** was updated to a 3.4 going forward, effective with this week's chart.

News & Notes

Arista's **Adam Doleac** will guest-host middays for Mt. Wilson **KKGO/Los Angeles** June 6-July 1. Stream [here](#).

Leighton/Grand Forks, ND Mgr./Digital Sales **Bri O'Neill**, whose oversight includes Country **KYCK**, has been named to the **MIW Mildred Carter Mentoring Program** class of 2022.

Benztown and **P1 Media Group** will host a free webinar, "How To Create A Winning Playlist In A Streaming & Social World," May 26 at 1pm ET. Register [here](#).

The **Mechanical Licensing Collective (MLC)** will host two Pride Month events for LGBT music industry creators and professionals in June. The "[Tuning Into Pride](#)" roundtable discussion webinar will be held June 1, and a first-ever [in-person workshop](#) will take place at MLC's Nashville offices June 22.

Grand Ole Opry member **Jeannie Seely** was honored with the Legacy Award May 21 at **The Nashville Women In Film & Television (WIFT) ALICE Awards Ceremony And Gala Dinner**. "Having served on the Board of the SAG/AFTRA for some 30 years, I am very familiar with the challenges women have faced pursuing their chosen careers," says Seely. "I appreciate the legacy

©2022 Country Aircheck™ — All rights reserved. Sign up free at www.countryaircheck.com. Send news to news@countryaircheck.com

parmalee
TAKE MY NAME
TOP 5
Spins Up 818 TW
Power Up



FRANK RAY
COUNTRY'D LOOK GOOD ON YOU
TOP 25
NEW: KAWO AND KMDL
CONVERT NOW
BMG STONEY CREEK BBR

Jelly Roll
Son of a Sinner
Top 30
New At:
KSD
KAWO
WQMX
Already Streaming
2.3 Million A Week

JIMMIE ALLEN
DOWN HOME
34* CA
New: WIL
WNOE / WSOC
Streaming Up 17%
To 1.3 Million

THANK YOU COUNTRY RADIO!
#2 MOST ADDED • 62 ADDS



Lainey Wilson

HEART LIKE A TRUCK

MCCN / MUSIC CHOICE
WUSN / CHICAGO
KILT / HOUSTON
KKBQ / HOUSTON
WXTU / PHILADELPHIA
WKLB / BOSTON
WKIS / MIAMI
KNIX / PHOENIX
WYCO / DETROIT

WQYK / TAMPA
KWBL / DENVER
WJVC / NASSAU-SUFFOLK
WKKT / CHARLOTTE
WSOC / CHARLOTTE
WIL / ST LOUIS
KCY Y / SAN ANTONIO
KFRG / RIVERSIDE
KSOP / SALT LAKE CITY

WWKA / ORLANDO
KCYE / LAS VEGAS
KWNR / LAS VEGAS
WDSY / PITTSBURGH
KBEQ / KANSAS CITY
WDAF / KANSAS CITY
WCOL / COLUMBUS
WQDR / RALEIGH
KRTY / SAN JOSE

WGNE / JACKSONVILLE
WKHK / RICHMOND
WQNU / LOUISVILLE
WKMK / MONMOUTH-OCEAN
WYRK / BUFFALO
WBEE / ROCHESTER
WDXB / BIRMINGHAM
WZZK / BIRMINGHAM
KWEN / TULSA

KHGE / FRESNO
WGNA / ALBANY
WCYQ / KNOXVILLE
WCKN / CHARLESTON
WYNK / BATON ROUGE
WXC Y / WILMINGTON
KAWO / BOISE
KCCY / COLORADO SPRINGS
WUSY / CHATTANOOGA

WQMX / AKRON
WKRO / DAYTONA BEACH
KORK / SPOKANE
KXLY / SPOKANE
WOLF / SYRACUSE
WKSJ / MOBILE
KFBI / WICHITA
KJUG / VISALIA
WKXC / AUGUSTA

WGTY / YORK
KMDL / LAFAYETTE
WXBQ / JOHNSON CITY
WQHK / FT WAYNE
WOKQ / PORTSMOUTH
WITL / LANSING
WKML / FAYETTEVILLE
KTTS / SPRINGFIELD

CATCH LAINEY TOMORROW, 5/24 ON **NBC'S TODAY**
AND THURSDAY, 5/26 ON **THE TONIGHT SHOW STARRING JIMMY FALLON**

Celebrating 40 Years

KXXY OKLAHOMA CITY



KXXY airstaff, 1994. Top: Ty Austin, Nate Webb. Center: Bill Reed, Tracy Thomas. Bottom: Dave Murray & Dan Stroud

Country Sign On: May 27, 1982, Summit Communications
 KXXY heralded its flip from Album Rock to Country by playing David Frizzell & Shelly West's "You're The Reason God Made Oklahoma" non-stop for 24 hours.
 KXXY has been No. 1 in 40 surveys, including 28 in a row from 1988 through 1994. The station still holds the record for the largest share ever recorded by an FM station in the market: an 18.6 in the Winter 1993 book.
Notable alumni: Wade Carter, Clay Daniels, Dave Dodson, Charlie Marcus, Mike Owens, Jay Phillips, Bill Reed, L.J. Smith, Ted Stecker, Tracy Thomas, Tom Travis, Lynn Waggoner.
 "Our success started with having a great GM [Bill Hurley], morning team [Dave & Dan] and staff of professionals. Music research was also key to our success, along with great promotions." —Jay Phillips, OM 1987-1995
 It was a privilege to be a part of this heritage station for 28 amazing years. I was surrounded by the best of the best and will always be grateful for all they did in defining my career in Country radio. It was an incredible ride! —Bill Reed, Programming/On-air 1993-2020
 My time as SVPP for iHeartRadio/Oklahoma City will always be cherished and filled with thankfulness that we were part of the KXY family. Over the last 40 years KXXY has become part of the Oklahoma City fabric. Air talent have become household names and Country stars have launched careers on its signal. —Tom Travis, SVPP 2004-2020



handed down by the generation before me, and I am proud of the progress we have made during our era."

Broken Bow's **Craig Morgan**, a 17-year Army and Army Reserves veteran, was inducted into the **U.S. Field Artillery Hall of Fame** May 18 during a ceremony at Fort Sill, OK where Morgan was once stationed.

JDC Radio, Inc. is selling Country **KKBI/Broken Bow, OK** and Hot AC **KQIB/Idabel, OK** to **JL Radio, LLC** for \$475,000.

Mega Media, Inc. is purchasing Classic Country **WKOO-AM/Rose Hill, NC** and translator **W263DF** from **Conner Media Corporation** for \$100,000.

Ryman Community Day presented by PNC Bank will take place May 29. Tennessee residents can tour **Ryman Auditorium** for free and an all day festival will take place on **PNC Plaza**.

Toby Keith, Justin Moore and **Craig Morgan** will perform at the **Heroes Honor Festival** May 27 and 28 at Daytona International Speedway. Details [here](#).

The **National Museum of African American Music** will host two exclusive screenings of the documentary *For Love & Country* June 10 & 11 during **CMA Fest**.

The *Country Music Success Stories* podcast hosted by **Candy O'Terry** and **Jacy Dawn Valeras** has released a special episode with **Kim Campbell**, widow of **Glen Campbell**, recorded in front of a live audience at the Glen Campbell Museum. Details [here](#).

The **Grand Ole Opry** will salute the U.S. Military May 24 with a special red carpet parade and *Salute The Troops* performance. Details [here](#).

Bunn Ramps Up On Amp

(continued from page 1)

The Amazon Music library has tens of millions of licensed songs that can be added to a show during setup or when a creator is live, but there are restrictions. Show hosts cannot record content or livestream their Amp show outside of the app. Additionally, the Amp music library will not allow a creator to play more than two songs from the same album or more than three songs from the same artist in any three-hour period, nor can creators repeat a song more than one time during a three-hour period. Creators cannot play any full song until at least one listener has joined the show. They can share music from outside of the Amp library, but they are responsible for obtaining any rights needed to share the music on the platform. All programming is commercial-free. Full guidelines [here](#).

Support Systems: Beyond a platform, music and associated tools, Amp's team has helped Bunn leverage his existing contacts and create new ones within the industry. "They have been able to get me in front of labels and assisted with getting me in to Stagecoach to do interviews and broadcast," he explains.

Though he has a Project Mgr. through Amp, Bunn produces, preps and executes his daily show on his own. "I built a studio at home during COVID, which has been a tremendous asset in this project," he says. At-home creators can just as easily use their phone and the app to launch a show without a studio, however. "The team from Amazon listened to my show the first week or two it was live, then we had a team meeting," Bunn explains. "They really liked what they heard from me and decided to move on to focusing on other creators who needed more hands-on help. I like that I have the liberty to create my own show without constant meetings." From his home studio, Bunn can run his show directly through the app, bring in guests and air pre-recorded interviews in addition to utilizing the music library.

Country Wide: The three other Country-themed shows found in a quick search of the app – @CountryMusic, @CountryCentral and @Country959fm – don't appear to be active yet. Bunn is out early, and has been aided by his team. "I'm represented by SB Projects here in Los Angeles, and I was connected to the Amp

team though a mutual friend just as my contract with Spotify ([CAT 10/21/20](#)) was ending," he says. "I was in talks with the team for about a year, and they felt I brought something different than some of the more traditional hosts."

Singer/songwriter **Hunter Hayes** also hosts a show on Amp; *Hear Me Out* airs Tuesday nights but is not tagged specifically as "country." Hayes uses the platform to engage with fans and work through different topics each week, including favorite multi-instrumentalists, future inductees to the Rock And Roll Hall Of Fame and favorite *Coachella* performances.



Hunter Hayes and manager Valerie Sizemore

The Amazon Amp app remains in beta and is only available on iPhone/iOS devices currently but can also be called up via Amazon Echo/Alexa enabled devices, as well. Those interested in exploring the app, tuning in to current shows or creating their own can download it [here](#) and sign up using the access code GRAHAMBUNN. Tomorrow (5/24), Bunn will welcome EMI Nashville's **Tyler Hubbard** and Luke Combs' Dir./Creative **Zack Massey** to the show.
 —Monta Vaden

THANK YOU KRTY

**FOR 32 YEARS OF LAUNCHING, SUPPORTING
AND LOVING ALL OF OUR ARTISTS!**



FROM, SCOTT BORCHETTA AND YOUR BMLG FAMILY



AVAILABLE JOBS

MIDWEST

Summit **KFDI/Wichita** OM **Justin Case** is searching for a morning co-host. See the complete posting [here](#); send résumés and airchecks to Case [here](#).

Townsquare SVP/Content & Programming **Kurt Johnson** is looking for a Dir./Content for the **Lansing, MI** cluster that includes Country **WITL**. Send résumés and airchecks [here](#).

Cumulus **WDRQ/Detroit** PD **David Corey** is seeking a midday personality. Send résumés and airchecks to him [here](#).

Ingstad/Thief River Falls, MN VP/Broadcasting **Jake Weber** is looking for a GM to oversee the cluster that includes Country **KKQD** & Classic Country **KKAQ-AM**. Send résumés and cover letters to Weber [here](#).

Townsquare **WITL/Lansing, MI** is searching for an Asst. Brand Mgr./morning host to succeed **Cadillac Jack**. Complete job description and application [here](#).

NRG **WYTE/Wausau, WI** GM **Aleese Fielder** is looking to add a morning co-host to join Brand Mgr./morning personality **Larry "Big Red" Wnorowski**. See complete job description and application [here](#).

Zimmer Dir./Music Programming **Chris Carson** is looking for a Country PD to oversee **KCLR/Columbia, MO** and assist in programming Country sisters **KATI/Jefferson City, MO** and **KWTO/Springfield, MO**. On-air duties will also be included. Complete job posting [here](#); send résumés and airchecks [here](#).

Mid-West Family **WRTB/Rockford, IL** Brand Mgr. **Gordon Mays** is looking to add an on-air morning producer to *The Morning Stampedede* alongside **Steve Summers**. See the complete job posting [here](#); send résumés and airchecks to Mays [here](#).

Leighton Broadcasting is searching for a Site Coord. to assist the Dir./Events in the overall operation of all Leighton signature events throughout **Minnesota**. See the complete job description and apply [here](#).

Community First Broadcasting GM **Buzz Paterson** is looking for an afternoon personality to join Country **KKIA/Storm Lake, IA**. Send résumés, three references and airchecks to him [here](#).

Federated **WBYT/South Bend, IN** PD **Jesse Garcia** is on the hunt for a morning host to succeed **Zach Miller**. Send résumés and airchecks to Garcia [here](#).

Emmis **WLHK/Indianapolis** PD **Sean Copeland** is searching for an APD/morning host. See the complete job posting [here](#); send résumés and airchecks to Copeland [here](#).

Cumulus **WFMS/Indianapolis** OM/PD **Christopher "Boomer" Layfield** is looking for an MD/afternoon host. See the complete job posting and apply [here](#); reach Layfield [here](#).

Neuhoff **WDZQ/Decatur, IL** PD **Josh Roberts** is seeking a morning host. Send résumés and airchecks to him [here](#).

Zimmer/Joplin, MO OM **Thom Watts** is searching for a morning co-host for Country **KIXQ**. See the complete job posting and apply [here](#); send résumés, references and airchecks [here](#).

NORTHEAST

Audacy/Rochester, NY VP/GM **Sue Munn** is looking for an OM for the five-station cluster that includes Country **WBEE**. Complete job description and application [here](#).

Townsquare/Atlantic City, NJ Dir./Content **Joe Kelly** is on the hunt for an Asst. Dir./Digital & Radio Content to join the cluster that includes Country **WPUR**. Complete job description and application [here](#).

Townsquare **WFRG/Utica, NY** Market Pres. **Karen Carey** is seeking a Brand Mgr./Digital Content Leader. Complete job description and application [here](#); send résumés and airchecks [here](#).

Forever/Ocean City, MD MM **Mark Schollenberger** is looking for a morning personality to join Country **WCHK**. Send résumés and airchecks to him [here](#).

Seven Mountains VP/Programming **JC Burton** is searching for an OM/PD/afternoon personality to join **WPIG/Olean, NY**. Send résumés and airchecks to him [here](#).

iHeartMedia **WMZQ/Washington, DC** & **WPOC/Baltimore** RSVPP **Jeff Kapugi** is searching for a Dir./Creative. See the complete job description and apply [here](#).

Connoisseur **WFRE/Frederick, MD** GM/GSM **Michael Banks** is looking for a Mgr./Promotions. Complete job posting [here](#); send résumés to Banks [here](#).

SOUTHEAST

Gulf South **WTVY/Dothan, AL** GM **Bryan Holladay** is seeking an OM/PD/morning co-host who can also handle PD duties for Top 40 sister **WKMX**. Send résumés and airchecks [here](#).

Townsquare **KMDL/Lafayette, LA** PD **Jude Walker** is searching for a midday personality. Complete job description and application [here](#).

iHeartMedia **WUBL/Atlanta** SVP/Programming **Meg Stevens** is "looking for future stars" to join for mornings. Complete job posting and application [here](#).

Saga Group PD **Scott Chase** is looking for a morning host to join **WCVL/Charlottesville, VA**. Complete job posting [here](#); send résumés and airchecks to Chase [here](#).

Saga Classic Country **WSIG/Harrisonburg, VA** OM **Brandy Lindsey** is searching for a PD. Send résumés and airchecks to here [here](#).

iHeartMedia EVP/Country Programming Strategy **Rod Phillips** and RSVP/Programming, Virginia-Carolina Region **Chadwick "AJ" Hausknecht** are seeking a PD/midday personality for Country **WNCB/Raleigh** to succeed **Carson Blackley**. Send résumés and airchecks to Phillips [here](#) and Hausknecht [here](#).

Forever **WOGY/Jackson, TN** EVP **Jared Mims** is searching for a morning co-host who will also write and produce newscasts each morning. Send résumés and airchecks to him [here](#).

Stephens Country **KLAA** & Classic Country **KBBK/Alexandria, LA** SVPP **Bob Thornton** is looking for an experienced PD/on-air talent to join the cluster. Send résumés, references and airchecks to him [here](#).

South Georgia Broadcasters **WBYZ/Baxley, GA** PD **Caleb Karnoutsos** is seeking a morning host to succeed the retiring **Alan DuPriest**. Send résumés, cover letters and airchecks to Karnoutsos [here](#).

Curtis/Lenoir, NC OM **Dave Thomas** is looking for an Asst. OM & Country **WKVS** midday personality. Send résumés and airchecks to him [here](#).

iHeartMedia/Alabama Area SVPP **Tom Hanrahan** is searching for a Dir./Regional Marketing & Promotions for the Birmingham, Huntsville, Montgomery and Tuscaloosa markets. See the complete job description and apply [here](#).

Cumulus/New Orleans RVP/MM **Pat Galloway** is seeking a PD to oversee Country **WRKN**, Alternative **WZRH** & Classic Hits **KKND**. Complete job description and application [here](#).

Cumulus/Melbourne, FL RVP **Pete DeSimone** is searching for a cluster OM and Country **WHKR** & Top 40 **WAOA** PD. See the job posting and apply [here](#).

Bristol Broadcasting Country **WMEV/Marion, VA** GM **Roger Bouldin** is seeking a morning personality. Send résumés and airchecks to him [here](#).

Delta Media Classic Country **KOGM/Lafayette, LA** Station Captain **Tanya Ardoin** is looking for a midday host. Send résumés and airchecks to her [here](#).

Golden Isles/Brunswick, GA Dir./Programming **Mark "The Shark" Ediss** is searching for a midday personality to join Country **WRJY**. Send résumés and airchecks to him [here](#).

SOUTHWEST

Cumulus **KPLX/Dallas** PD **Mike Preston** is looking for a morning co-host to join incumbent **Tara Ward**. Candidates need not currently work in Country radio but should "love country music, love Texas and [be] great with social media." Complete job description and application [here](#).

Alpha/Amarillo, TX OM & Country **KGNC PD Bill Dollar** is searching for an on-air personality capable of wearing many hats on the programming team and who can assist with the promotions department. Complete job description and application [here](#).

HEH Communications/Huntsville, TX MM **Tim Johnson** is searching for an OM/PD/on-air host for Country **KSAM** & Classic Hits **KHVL**. Send résumés and airchecks to him [here](#).

Audacy/Houston SVP/MM **Sarah Frazier** is seeking a Dir./Regional Promotion. See the complete job description and apply [here](#).

At Townsquare/Killeen, TX the search is on for a Dir./Digital & Radio Content to oversee the cluster that includes Country **KUSJ**. See the complete job description and apply [here](#).

WEST COAST

Cumulus **KATM/Modesto, CA** PD **Andy Winford** is looking for a third-mic morning co-host to join **DJ Walker** and **Jaimee Lee**. See complete job description and apply [here](#).

Bicoastal/Centralia, WA OM/Sports Dir. & Country **WMNT** afternoon personality **Ryan Trotter** is heading up the search for his own successor. Send résumés and airchecks to him [here](#).

AGM Regional Mgr. **Rich Watson** is looking for a PD/morning host for Country **KSNI/Santa Maria, CA**. See the complete job posting [here](#); send résumés, social links and airchecks [here](#).

Riverbend **KTHK/Idaho Falls, ID** OM **Jade Davis** and Group PD **Viktor Wilt** are looking to add a PD/on-air talent to handle Country duties. See the complete job description [here](#); send résumés, social media links and airchecks [here](#).

Cumulus **KUBL/Salt Lake City** is searching for a PD to succeed **Travis Moon**. Complete job description and application [here](#).

Alpha/Portland OM & Country **KUPL** Dir./Content **Gene Sandbloom** is seeking a dedicated PD for **KUPL**. Complete job description [here](#); send résumés, cover letters, programming philosophies, brand composites and airchecks to Sandbloom [here](#).

OTHER

Pandora is adding a Dir./Country Programming to manage the programming and curation of country music destinations on the platform. See the complete job description and apply [here](#).

OH Creative owner **Olivia Hanceri** is looking to add a publicist with three-to-five years of experience to her growing team. See the complete job description [here](#); send résumés to Hanceri [here](#).

The **ACM** is also seeking a Nashville-based Coord./Marketing & Social Media. See the complete job posting [here](#); send résumés and cover letters [here](#).

Monument VP/Promotion **Luke Jensen** is searching for a Dir./Regional Promotion. See the complete job description and apply [here](#).



RESTLESS ROAD

GROWING OLD WITH YOU

YOUR LISTENERS ARE ALREADY SINGING THIS SONG

[CLICK HERE](#)

"TO ME, THERE'S NO QUESTION WHETHER THIS SONG IS A HIT OR NOT. IT IS. AFTER JUST 140 PLAYS, I CAN ALREADY FEEL THIS WILL BE ONE OF THE MOST IMPACTFUL SONGS OF THE YEAR."

- DAVID COREY, *WDRQ DETROIT*



SOLD-OUT
HEADLINING *BAR FRIENDS*
TOUR



SEEKING JOBS**•Tony Kelly**

Former WUSN/Chicago morning producer
KellyT_60468@yahoo.com
708-642-8518

•Greg Cole

Former WKCQ/Saginaw, MI OM/PD
GCole27000@gmail.com
916-502-4734

•Jonathan West

Former WKTI/Milwaukee afternoons
JonathanWestRadio@gmail.com
320-774-9300

•Marc Lavik (aka Dave Marcus)

Former on-air talent
ZimaGuy@gmail.com
401-467-6737

•Cory Mikhals

Former KIZN/Boise morning co-host
CoryProductions@icloud.com

•“Big” John Horton

Former KFSA/Ft. Smith, AR afternoon host
BigJohn@TheBigJohnShow.com

•Kris Richards

Former WKJO/Smithfield, NC afternoons
FireCop947@yahoo.com

•AJ McCloud

Former WWFF/Huntsville, AL APD/afternoons
AJ.McCloud@charter.net
256-503-2301

•Mac Daniels

Former KPLX & KSCS/Dallas PD
MacDaniels@me.com

•Brittany Tully

Former WYNK/Baton Rouge PD
BriLynn718@gmail.com

•Bill Hickok

Former KBMR/Bismark, ND morning host
BillHickok1950@gmail.com

•Amy Nic

Former WAMZ/Louisville afternoon host
AmyNicRadioChick@gmail.com

•Ron “Keyes” Stevens

Former WQRB/Eau Claire, WI afternoon host
RonStvns@yahoo.com

•Scott Davidson

Former WHOF-HD2/Canton, OH PD/on-air host
Davidson1023@gmail.com

•Trace Hamilton

Former WEBG/Chicago night host
TheTraceHamilton@gmail.com

•Ryan McCall

Former WGLR/Platteville, WI MD/afternoons
RyanMcCall@yahoo.com

•David Dean

Former KXDD/Yakima, WA afternoons
DaviDean5@gmail.com

•Brian “Wookie” Kostek

Former WDSY/Pittsburgh APD/MD/afternoons
BKostek24@gmail.com

•Kim Brixton

Former WNWN/Battle Creek, MI mornings/middays
KimBrixton@gmail.com

•Mark McKay

Former Riser House Dir./Southeast Promotion
MMcKay973@gmail.com

•Amber Rainey

Former KSON/San Diego middays
AmberRaineyOnAir@gmail.com

•Tami Rumpfelt

Former WPAW/Greensboro afternoons
TamiRumpfelt@gmail.com

•Mike McKay

Former WQRB/Eau Claire, WI Brand Mgr./mornings
McKProd@charter.net

•Jimmy Elliott

Former WOVK/Wheeling, WV WPP/PD/MD/mornings
JimmyElliottSchlosser@gmail.com

•Jim Dorman

Former iHeartMedia/Wichita SVPP & Country KZSN PD/middays
JimDorman2@aol.com

•Amy Lynn

Former WCKT/Ft. Myers, FL middays
AmyLynnRadio@gmail.com

•Bill “Stu” Stewart

Former KASH/Anchorage, AK PD/morning co-host
602-785-5329
BSTu1013@gmail.com

•Ashley King

Former KHLLR/Little Rock, AR afternoons
AKingMarsh@gmail.com

•Jess Tyler

Former WOKQ/Portsmouth, NH Brand Mgr./MD/middays
JTylor1999@yahoo.com

•Jim Pearson

Former KDBL/Yakima, WA PD/mornings
JimsCoolEmail@gmail.com
831-261-1822

•Aaron “Gator” Glass

Former WQNU/Louisville mornings
GatorGlass.53@gmail.com

•Carly Quinn

Former WGH/Norfolk morning co-host
NewEnglandClamChowder2021@yahoo.com
757-617-8171

•Jared Marlowe

Former WWOE/Tallahassee weekender
RadioJared@gmail.com

•Chuck Akers

Former KTHT/Houston morning co-host
chuckakers@comcast.net

•Ryan Wild

Former WLHK/Indianapolis PD/middays
WildOnAir@aol.com
815-353-6101

•Kyle Murphy

Former KSJB-AM/Jamestown, ND morning personality
KyleMurphyRadio@gmail.com

•Dan McKee

Former Summit/Knoxville GSM
DanMcKee01@gmail.com
865-405-8414

•Curt Miller

Former CMT After MidNite With Cody Alan Sr. Producer
Curt615@gmail.com

•Isaac “Brooks” Wenzel

Former WFMS/Indianapolis MD/afternoon host
BrooksOnTheRadio@gmail.com

RANDY HOUSER

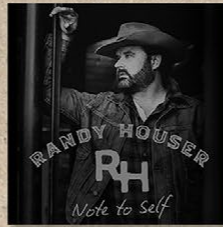
RH

Note to Self



SPINNING DOUBLE DIGITS AT 20+ STATIONS

#17 CPS RANK



SALES UP 20%

"'NOTE TO SELF' IS A SMASH. OUR FIRST TESTING ON IT WAS TOP 5. RANDY HAS A DISTINCTIVE VOICE AND THE SONG JUMPS OFF THE RADIO. WE ARE ALREADY PLAYING IT 28X PER WEEK AND GETTING HUGE RESPONSE."

- KRTY/SAN JOSE VP/GM

OVER 50 REPORTING STATIONS

- | | | | | | | | | |
|------|------|------|------|------|------|--------------|------|------|
| KILT | WKIS | KMLE | WYCD | WFUS | WQYK | WJVC | WSOC | KWJJ |
| WIL | KAJA | KSOP | WWKA | WDSY | KASE | KBEQ | WQDR | KRTY |
| WKDF | WUSH | WQIK | WQKX | WAMZ | WKMK | WWGR | KSKS | KHKI |
| WCKN | WTGE | WXCX | WOGK | KCCY | WUSY | KSSN | WKRO | WTHT |
| WRNS | KXLY | WBUL | WDRM | KJUG | WKXC | WGTY | WXBQ | WQHK |
| | WSLC | WUSJ | KFKF | WCOL | WNCY | MUSIC CHOICE | | |

ON TOUR WITH CODY JOHNSON THIS FALL!



April 2022 PPM Scoreboard

Country shares increased for the fourth consecutive month with the April 2022 PPM Book (3/31/22-4/27/22.) Total format shares increased 3.3% from 344.9 to 356.2 March to April. Year to year, the format edged ahead 0.3% from last April's 355.2. Total cume of all stations increased by 895,600 to 24,033,600, a 3.9% rise from March, though year-to-year cume was down 8.0% from last April's 26,112,500. KRTY/San Jose was the only station to lead its market,

and it maintained the format's largest share for the second straight month. A cume increase of more than 12% helped KPLX/Dallas claim the format's cume crown for the first time since last September. Legend: A "+" indicates a Classic Country outlet; a "^" designates co-owned Country stations in the metro; a "†" indicates a tie; and a "*" indicates a station that is a recent subscriber for which ratings were not currently available. Ranks are among subscribers.

Apr. PPM Top 10

SHARE		95.3 KRTY SAN JOSE, TX COUNTRY	
MAR	APR		
1	1	KRTY/San Jose	9.3
3	2	WQIK/Jacksonville	9.0
4	3	WVYZ/Hartford	8.2
2	4	WCTK/Providence	7.8
--	5	KNCI/Sacramento	7.6
--	6†	WSM/Nashville	6.7
5	6†	WSIX/Nashville	6.7
8†	8†	WGNE/Jacksonville	6.6
--	8†	WPOC/Baltimore	6.6
--	10	WGAR/Cleveland	6.5

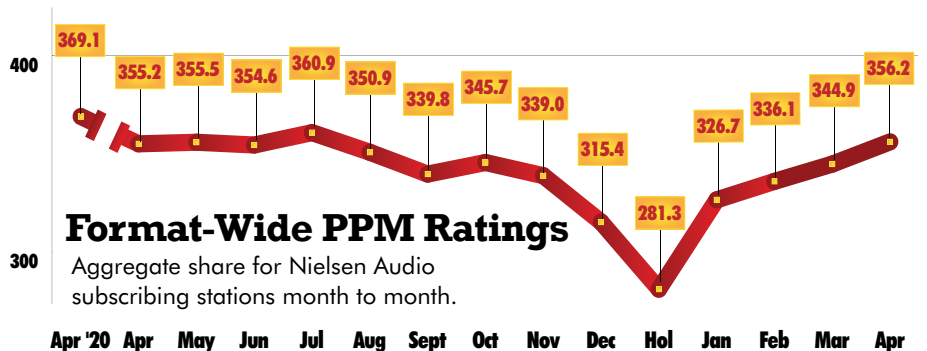
Station/City	Mar 6+ Share	Rank	Apr 6+ Share	Rank	Mar Cume	Apr Cume	Station/City	Mar 6+ Share	Rank	Apr 6+ Share	Rank	Mar Cume	Apr Cume
WKHX/Atlanta	3.4	9	4.5	7†	350,800	393,600	KMNB/Minneapolis	1.8	16	1.8	17	256,800	263,700
WUBL/Atlanta	2.8	14	3.1	13†	389,600	422,400	KLCI/Minneapolis +	0.7	23	1.2	20†	87,300	113,400
KASE/Austin ^	5.7	5	5.9	5	224,500	224,300	WKDF/Nashville ^	3.0	13	2.9	14	149,500	162,300
KVET/Austin ^	5.3	6	5.1	6	239,800	249,700	WSIX/Nashville	7.2	2	6.7	3†	243,300	219,700
KOKE/Austin	1.3	20	1.4	20†	67,800	85,200	WSM-FM/Nashville ^	5.5	7†	6.7	3†	181,100	199,700
WPOC/Baltimore	6.1	4	6.6	4	323,800	303,800	WGH/Norfolk	5.1	6	4.8	7	153,800	159,300
WKLB/Boston	4.0	9	4.0	8	505,800	513,400	WUSH/Norfolk	5.2	5	5.8	4†	162,100	165,500
WBWL/Boston	2.2	17	2.1	17	272,200	274,900	WWKA/Orlando	4.0	10†	3.8	12	183,400	170,900
WCTK/Boston (Providence)	0.3	27†	0.4	27	57,500	89,500	WOTW/Orlando	*	*	1.5	16	*	92,300
WKKT/Charlotte	5.0	6†	5.6	4	286,900	290,700	WXTU/Philadelphia	4.7	7†	4.3	9	516,100	539,500
WSOC/Charlotte	4.1	12	4.6	10	280,900	278,200	KMLE/Phoenix	3.9	8	3.9	7†	398,500	382,200
WUSN/Chicago	3.3	8	3.1	11†	818,400	771,600	KNIX/Phoenix	3.3	9†	3.6	9	482,900	476,900
WUBE/Cincinnati ^	5.1	5†	4.9	7	369,900	334,800	WDSY/Pittsburgh	3.7	10	4.2	9	203,200	231,000
WNKN/Cincinnati +	1.3	18	1.5	17	99,700	87,600	WPGH/Pittsburgh	3.4	11	3.5	10†	170,700	183,400
WNNF/Cincinnati	2.1	14†	2.3	14	150,400	148,600	WLYI/Pittsburgh ^ +	1.3	16†	1.3	16†	65,500	73,000
WYGY/Cincinnati ^	1.8	16†	0.8	19†	120,500	88,100	WOGG/Pittsburgh ^	1.1	20†	1.1	19†	65,300	62,600
WGAR/Cleveland	5.5	6	6.5	6	262,800	277,400	WOGI/Pittsburgh ^	1.3	16†	1.1	19†	83,500	88,300
WCOL/Columbus, OH	6.7	4†	6.1	5	282,700	280,500	KUPL/Portland	4.7	5	3.3	12†	248,500	212,600
KPLX/Dallas ^	3.4	11	4.4	3	701,900	787,000	KWJJ/Portland	3.7	9†	3.3	12†	243,800	244,700
KSCS/Dallas ^	3.2	12†	3.3	13	633,100	647,900	WCTK/Providence	10.0	2	7.8	2	222,300	243,200
KYGO/Denver	6.3	2	6.1	2	384,100	399,700	WNCB/Raleigh	1.9	13†	1.8	16	122,800	106,600
KWBL/Denver	1.8	17	2.7	12†	173,800	190,800	WQDR/Raleigh	5.0	8†	4.2	10	220,700	196,500
WDRQ/Detroit	2.7	15	2.3	16†	286,200	304,600	KFRG/Riverside	3.6	5†	3.6	6†	258,300	251,600
WYCD/Detroit	4.0	12	4.3	10	427,500	473,800	KNCI/Sacramento	5.9	4	7.6	2	245,200	285,900
WPAW/Greensboro	3.4	10†	3.9	9†	157,400	154,500	KNKY/Sacramento +	1.4	17	1.4	16	74,600	67,300
WTQR/Greensboro	4.7	7	4.6	6	160,300	149,900	KYRV-HD2/Sacramento	0.5	24	0.4	23†	37,200	34,200
WVYZ/Hartford	7.5	4	8.2	2	147,600	158,500	KEGA/Salt Lake City	0.9	24	1.0	22†	106,800	109,000
KILT/Houston	3.7	11†	3.5	14	769,300	663,100	KSPB/Salt Lake City	6.3	3†	5.7	5	186,400	193,800
KKBQ/Houston ^	4.2	9	3.9	11†	816,100	755,400	KUBL/Salt Lake City	3.5	12†	4.1	8	222,600	219,000
KTHH/Houston ^ +	2.2	20	2.1	20	375,800	338,900	KAJA/San Antonio	5.7	5	5.5	4	336,600	379,100
WFMS/Indianapolis	5.7	5	5.7	6	196,100	203,400	KCYF/San Antonio ^	3.9	10	4.1	8†	413,000	410,100
WLHK/Indianapolis	5.5	6	6.1	5	208,700	244,500	KKYX-AM/San Antonio ^ +	1.1	22†	1.0	23	69,400	73,100
WGNE/Jacksonville	6.3	5	6.6	6	223,800	220,800	KRPT/San Antonio ^ +	0.4	25†	0.4	26†	67,700	67,700
WQIK/Jacksonville	8.2	3†	9.0	3	237,400	244,400	KSON/San Diego	3.8	9†	3.8	9	300,100	297,100
KBEQ/Kansas City ^	3.6	11†	3.3	13	169,100	191,500	KBAY/San Francisco (San Jose)	*	*	0.9	25†	*	220,300
KFKF/Kansas City ^	3.9	8†	4.1	10	188,400	226,300	KRTY/San Francisco (San Jose)	2.9	10†	2.4	14	208,400	211,400
WDAF/Kansas City	3.9	8†	4.0	11	165,700	190,200	KBAY/San Jose	*	*	3.7	7	*	156,400
KCYE/Las Vegas	2.4	14	2.8	14	139,100	142,300	KRTY/San Jose	10.9	1	9.3	1	141,500	144,100
KWNR/Las Vegas	3.2	11	3.0	12†	176,400	181,300	KKWF/Seattle	2.8	15	3.0	14†	327,700	315,900
KKGO/Los Angeles	2.7	14	2.6	11	621,300	617,500	KNUC/Seattle	2.6	18†	2.3	19†	236,600	242,300
WGKX/Memphis	3.6	9	4.3	9	118,900	138,300	KSD/St. Louis	4.8	10	5.6	9†	307,700	389,400
WLFP/Memphis	3.1	11	3.0	11	110,500	96,600	WIL/St. Louis	6.4	7	6.2	7	388,300	403,500
WKIS/Miami	3.4	11	3.3	11	317,400	330,300	WFUS/Tampa	4.2	8†	4.1	8	316,800	318,200
WKMK/Middlesex (Monmouth)	1.8	15	1.6	17†	71,400	72,300	WQYK/Tampa	4.0	10	3.7	10†	263,200	280,800
WMIL/Milwaukee	5.3	7	6.3	5	255,400	276,300	WMZQ/Washington	3.0	15	3.0	15	300,100	324,900
KEEY/Minneapolis	5.0	9†	5.0	9	434,600	425,900	WIRK/West Palm Beach	5.1	4	6.3	2†	97,400	123,200

Apr. PPM Top 10

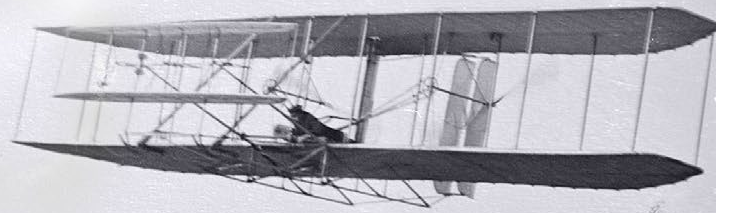
CUME
MAR APR

4	1	KPLX/Dallas	787,000
1	2	WUSN/Chicago	771,600
2	3	KKBQ/Houston	755,400
3	4	KILT/Houston	663,100
5	5	KSCS/Dallas	647,900
6	6	KKGO/Los Angeles	617,500
7	7	WXTU/Philadelphia	539,500
8	8	WKLB/Boston	513,400
9	9	KNIX/Phoenix	476,900
--	10	WYCD/Detroit	473,800

99.5 THE WOLF
TEXAS COUNTRY



MATT STELL



MAN MADE

THANK YOU COUNTRY RADIO
FOR 40 FIRST WEEK STATIONS!

MUSIC CHOICE, KILT, KKBQ, KNUC, KMLE, WQYK,
KWBL, KYGO, WJVC, WSOC, KSOP, KWNR, KBEQ,
WCOL, WQDR, KRTY, KOLC, WGH, WPAW, WTQR,
KJKE, WGKX, WKMK, WWGR, WCKN, WTGE, WXCX,
KCCY, KSSN, WWQM, WKRO, WTHT, KXLY, KJUG,
WKXC, WGTY, WQHK, WSLC, KKIX, WKML



LW	TW	Artist/Title (Label)	Total Points +/-	Points	Total Plays +/-	Plays	Audience +/-	Aud	Stations	ADDS
3	1	JASON ALDEAN ✓ Trouble With A Heartbreak (Macon Music/Broken Bow)	26360	2729	7527	778	31.696	3.564	159	0
1	2	LUKE COMBS /Doin' This (River House/Columbia)	24971	-2019	7222	-676	31.388	-1.796	159	0
4	3	THOMAS RHETT /Slow Down Summer (Valory)	24151	1968	6957	579	30.81	3.656	158	0
6	4	PARMALEE /Take My Name (Stoney Creek) ✓	23722	2654	6930	818	27.807	2.394	157	1
7	5	WALKER HAYES /AA (Monument)	22051	1567	6388	513	26.116	1.244	155	0
8	6	MORGAN WALLEN /Wasted On You (Big Loud) ✓	22040	2157	6538	682	27.656	2.191	159	1
5	7	KEITH URBAN /Wild Hearts (Capitol)	21586	178	6280	50	25.759	0.17	157	0
9	8	TIM MCGRAW /7500 OBO (Big Machine)	17795	894	5156	251	21.143	1.012	159	0
12	9	SCOTTY MCCREERY /Damn Strait (Triple Tigers)	16978	1687	5023	506	20.367	2.695	158	0
13	10	JAKE OWEN /Best Thing Since Backroads (Big Loud)	15890	701	4614	219	19.592	0.743	158	0
11	11	MAREN MORRIS /Circles Around This Town (Columbia)	15471	44	4411	32	17.36	0.295	158	0
14	12	MIRANDA LAMBERT /If I Was A Cowboy (RCA)	14620	542	4235	124	14.695	0.827	159	0
15	13	DYLAN SCOTT /New Truck (Curb)	13584	280	3984	108	15.129	0.328	158	0
16	14	CHRIS YOUNG w/M. TENPENNY /At The End Of A Bar (RCA)	12430	919	3621	276	13.786	0.976	158	1
17	15	JON PARDI /Last Night Lonely (Capitol)	11980	997	3514	281	13.208	1.402	156	2
18	16	ERNEST f/MORGAN WALLEN /Flower Shops (Big Loud)	10499	115	3088	-11	11.432	0.545	156	0
20	17	JUSTIN MOORE /With A Woman You Love (Valory)	10361	804	3163	264	10.392	0.234	155	0
26	18	KANE BROWN /Like I Love Country Music (RCA) ✓	10304	2936	2962	855	13.669	4.782	156	7
21	19	KENNY CHESNEY /Everyone She Knows (Blue Chair/Warner/WEA)	9584	346	2798	139	11.071	0.421	148	2
22	20	JACKSON DEAN /Don't Come Lookin' (Big Machine)	9490	566	2661	157	10.054	0.538	154	2
24	21	CARRIE UNDERWOOD /Ghost Story (Capitol)	9004	834	2500	259	9.288	0.888	148	2
23	22	DUSTIN LYNCH /Party Mode (Broken Bow)	8509	242	2365	87	7.611	-0.434	154	0
10	23	C. PEARCE & A. MCBRYDE /Never... (Big Machine/WMN)	8455	-8363	2491	-2454	14.262	-8.079	158	0
27	24	OLD DOMINION /No Hard Feelings (Arista)	8134	786	2343	235	8.038	0.46	149	5
25	25	FRANK RAY /Country'd Look Good On You (Stoney Creek)	8122	221	2450	85	8.306	0.234	140	2

©2022 Country Aircheck™ All rights reserved. Sign up at countryaircheck.com • Send news to news@countryaircheck.com ✓=Top 5 Point Gainers

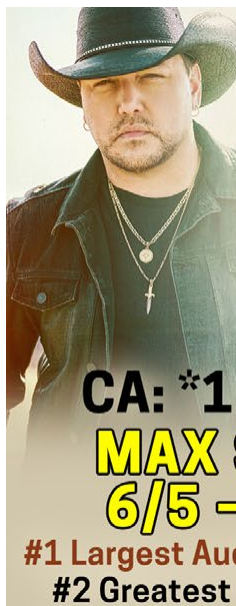
CLAY WALKER
CATCHING UP WITH AN OL' MEMORY

3 POINT JUMP TO 46* ON CA/MB ON 69 STATIONS
+28% AUDIENCE INCREASE

***4 NEW ADDS: WUBL/ATLANTA, KJKE/OKLAHOMA CITY, WDRM/HUNTSVILLE, WQMX/AKRON**
PLAYING 35X A WEEK AT KSCS/DALLAS WITH POSITIVE RESEARCH
+ 152% STREAMING INCREASE AT PANDORA

LW	TW	Artist/Title (Label)	Total Points +/-	Points	Total Plays +/-	Plays	Audience +/-	Aud	Stations	ADDS
28	26	📶 LEE BRICE/Soul (Curb)	7201	79	2061	39	6.75	0.436	147	0
29	27	📶 MORGAN WADE/Wilder Days (Arista)	5774	244	1697	83	4.038	0.397	137	0
31	28	📶 I. ANDRESS w/S. HUNT/Wishful Drinking (Atlantic/Warner/WEA)	5730	413	1616	121	4.71	0.224	114	10
32	29	📶 MITCHELL TENPENNY/Truth About You (Riser House/Columbia)	5691	633	1565	151	5.61	0.94	117	7
30	30	📶 JELLY ROLL/Son Of A Sinner (BMG/Stoney Creek)	5686	193	1751	66	6.74	0.591	109	3
34	31	📶 GABBY BARRETT/Pick Me Up (Warner/WAR)	5292	332	1443	101	5.098	-0.385	115	7
33	32	📶 ZAC BROWN BAND/Out In The Middle (Home Grown/Warner/WAR)	5044	19	1471	22	5.188	0.415	127	2
19	33	HARDY/Give Heaven Some Hell (Big Loud)	4579	-5390	1418	-1621	5.235	-6.563	158	0
35	34	📶 JIMMIE ALLEN/Down Home (Stoney Creek)	4258	181	1314	80	4.395	0.351	120	3
36	35	📶 KELSEA BALLERINI/Heartfirst (Black River)	4023	6	1156	15	2.677	-0.162	126	5
37	36	📶 BRETT YOUNG/You Didn't (BMLGR)	3918	214	1170	57	2.499	0.171	119	3
39	37	📶 PRISCILLA BLOCK/My Bar (InDent/Mercury)	3670	53	1076	25	1.991	0.194	115	1
38	38	CAROLINE JONES/Come In ... (Mailboat/New Revolution)	3659	-45	1205	-8	1.594	0.062	104	0
AIRBORNE CHRIS STAPLETON/Joy Of My Life (Mercury)			3375	508	947	115	4.204	0.419	96	3
40	40	CONNER SMITH/Learn From It (Valory)	3007	-31	951	-15	1.525	0.048	109	1
42	41	📶 RUSSELL DICKERSON f/JAKE SCOTT/She Likes It (Triple Tigers)	2930	385	858	114	2.3	0.244	76	4
43	42	📶 LADY A/What A Song Can Do (BMLGR)	2536	10	819	1	1.329	0.003	105	2
Debut	43	📶 TYLER HUBBARD/5 Foot 9 (EMI Nashville) ✓	2506	2506	693	693	3.135	3.135	86	86
44	44	MICHAEL RAY/Holy Water (Warner/WEA)	2365	-54	687	-14	1.211	-0.213	86	2
45	45	📶 C. BECKHAM & L. ELL/Can't Do ... (Wheelhouse/Stoney Creek)	1862	77	638	26	0.897	0.049	62	0
49	46	📶 CLAY WALKER/Catching Up With An Ol' Memory (Show Dog)	1710	203	515	56	2.257	0.018	58	2
46	47	📶 LITTLE BIG TOWN/Hell Yeah (Capitol)	1672	-9	458	11	2.771	0.461	66	3
50	48	📶 JOE NICHOLS/Good Day For Living (Quartz Hill)	1634	150	540	52	0.9	0.076	65	1
47	49	DILLON CARMICHAEL/Son Of A (Riser House)	1614	-40	577	-4	0.951	-0.117	60	1
48	50	BRETT ELDRIDGE/Songs About You (Warner/WMN)	1529	-67	391	-8	1.089	0.101	51	1

©2022 Country Aircheck™ All rights reserved. Sign up at countryaircheck.com • Send news to news@countryaircheck.com ✓=Top 5 Point Gainers



JASON ALDEAN
TROUBLE WITH A HEARTBREAK
CA: *1 BB: *1
MAX SPINS
6/5 - 6/20
#1 Largest Audience Increase
#2 Greatest Points Gainer

DUSTIN LYNCH
PARTY MODE
CA: *22 BB: *25
Streaming nearly
ONE MILLION
Weekly
Consumption
UP Again!
Shazams UP
Again!



BBR BBR BMG

Lainey Wilson
HEART LIKE A TRUCK
#2 MOST ADDED
62 First Week Adds
Catch her tomorrow
on NBC's **TODAY**
And Thursday on **The Tonight Show** Starring Jimmy Fallon



Country Aircheck Add Leaders

TYLER HUBBARD /5 Foot 9 (EMI Nashville)	86
LAINIE WILSON /Heart Like A Truck (Broken Bow)	62
MATT STELL /Man Made (Records)	36
NIKO MOON /Easy Tonight (RCA)	16
I. ANDRESS w/S. HUNT /Wishful Drinking (Atlantic/Warner/WEA)	10
GABBY BARRETT /Pick Me Up (Warner/WAR)	7
KANE BROWN /Like I Love Country Music (RCA)	7
MITCHELL TENPENNY /Truth About You (Riser House/Columbia)	7
KELSEA BALLERINI /Heartfirst (Black River)	5
OLD DOMINION /No Hard Feelings (Arista)	5

Country Aircheck Top Point Gainers

KANE BROWN /Like I Love Country Music (RCA)	2936 ✓
JASON ALDEAN /Trouble... (Macon Music/Broken Bow)	2729 ✓
PARMALEE /Take My Name (Stoney Creek)	2654 ✓
TYLER HUBBARD /5 Foot 9 (EMI Nashville)	2506 ✓
MORGAN WALLEN /Wasted On You (Big Loud)	2157 ✓
THOMAS RHETT /Slow Down Summer (Valory)	1968
SCOTTY MCCREERY /Damn Strait (Triple Tigers)	1687
WALKER HAYES /AA (Monument)	1567
JON PARDI /Last Night Lonely (Capitol)	997
LAINIE WILSON /Heart Like A Truck (BMG/Broken Bow)	955

Country Aircheck Top Spin Gainers

KANE BROWN /Like I Love Country Music (RCA)	855
PARMALEE /Take My Name (Stoney Creek)	818
JASON ALDEAN /Trouble... (Macon Music/Broken Bow)	778
TYLER HUBBARD /5 Foot 9 (EMI Nashville)	693
MORGAN WALLEN /Wasted On You (Big Loud)	682
THOMAS RHETT /Slow Down Summer (Valory)	579
WALKER HAYES /AA (Monument)	513
SCOTTY MCCREERY /Damn Strait (Triple Tigers)	506
LAINIE WILSON /Heart Like A Truck (BMG/Broken Bow)	282
JON PARDI /Last Night Lonely (Capitol)	281

Activator Top Point Gainers

KANE BROWN /Like I Love Country Music (RCA)	1948 ✓
JASON ALDEAN /Trouble With A... (Macon Music/Broken Bow)	1645 ✓
PARMALEE /Take My Name (Stoney Creek)	1477 ✓
MORGAN WALLEN /Wasted On You (Big Loud)	1382 ✓
JON PARDI /Last Night Lonely (Capitol)	925 ✓
SCOTTY MCCREERY /Damn Strait (Triple Tigers)	907
WALKER HAYES /AA (Monument)	896
CARRIE UNDERWOOD /Ghost Story (Capitol)	791
TIM MCGRAW /7500 OBO (Big Machine)	728
DUSTIN LYNCH /Party Mode (Broken Bow)	646

Activator Top Spin Gainers

KANE BROWN /Like I Love Country Music (RCA)	356
JASON ALDEAN /Trouble With A... (Macon Music/Broken Bow)	318
PARMALEE /Take My Name (Stoney Creek)	282
MORGAN WALLEN /Wasted On You (Big Loud)	249
WALKER HAYES /AA (Monument)	209
JON PARDI /Last Night Lonely (Capitol)	169
CARRIE UNDERWOOD /Ghost Story (Capitol)	144
SCOTTY MCCREERY /Damn Strait (Triple Tigers)	143
CHRIS YOUNG w/TENPENNY /At The End Of... (RCA)	122
TIM MCGRAW /7500 OBO (Big Machine)	121

Country Aircheck Top Recurrents

C. SWINDELL & L. WILSON /Never... (Warner/WMN/BBR)	22152
CODY JOHNSON /Til You Can't (Warner/CoJo/WMN)	20913
D. LYNCH f/M. PORTER /Thinking 'Bout You (Broken Bow)	15535
SAM HUNT /23 (MCA)	15140
J. ALDEAN & C. UNDERWOOD /If... (BMG/Capitol/Broken Bow)	13612
MORGAN WALLEN /Sand In My Boots (Big Loud)	12525
E. KING & M. LAMBERT /Drunk ... (RCA/Columbia)	10985
JORDAN DAVIS f/LUKE BRYAN /Buy Dirt (MCA)	10725
D. BENTLEY w/BRELAND & HARDY /Beers... (Atlantic/Big Loud/Capitol)	10257
CHRIS YOUNG & KANE BROWN /Famous Friends (RCA)	9322

©2022 Country Aircheck™ All rights reserved. Sign up at countryaircheck.com • Send news to news@countryaircheck.com ✓=Top 5 Point Gainers

"DARIUS AND FRIENDS" BENEFIT CONCERT





DARIUS AND FRIENDS

2022 ANNUAL TEE-OFF

RYMAN AUDITORIUM • MONDAY, JUNE 6 • BENEFITTING ST. JUDE

St. Jude Children's Research Hospital
Finding cures. Saving children.

AIRPLAY BY STATION OWNER

			 iHeart (52)			 Audacy (17)			 Cumulus (16)			 Townsquare (7)		
OVERALL														
LW	TW	ARTIST/Title	Rank	Spins	Avg/Sta	Rank	Spins	Avg/Sta	Rank	Spins	Avg/Sta	Rank	Spins	Avg/Sta
3	1	JASON ALDEAN/Trouble With A Heartbreak	1	2,816	54.2	5	544	32.0	3	611	38.2	4	320	45.7
1	2	LUKE COMBS/Doin' This	3	2,711	52.1	7	493	29.0	2	626	39.1	1	354	50.6
4	3	THOMAS RHETT/Slow Down Summer	5	2,595	49.9	2	600	35.3	4	605	37.8	2	331	47.3
6	4	PARMALEE/Take My Name	2	2,749	52.9	9	447	26.3	7	543	33.9	8	204	29.1
7	5	WALKER HAYES/AA	7	1,893	36.4	1	650	38.2	5	585	36.6	5	311	44.4
8	6	MORGAN WALLEN/Wasted On You	6	1,977	38.0	4	552	32.5	1	723	45.2	11	194	27.7
5	7	KEITH URBAN/Wild Hearts	4	2,707	52.1	6	527	31.0	10	492	30.8	7	204	29.1
9	8	TIM MCGRAW/7500 OBO	8	1,749	33.6	11	409	24.1	9	512	32.0	3	329	47.0
12	9	SCOTTY MCCREERY/Damn Strait	11	1,545	29.7	13	392	23.1	6	556	34.8	14	174	24.9
13	10	JAKE OWEN/Best Thing Since Backroads	9	1,600	30.8	12	401	23.6	12	419	26.2	10	194	27.7
11	11	MAREN MORRIS/Circles Around This Town	13	1,473	28.3	10	434	25.5	14	381	23.8	9	199	28.4
14	12	MIRANDA LAMBERT/If I Was A Cowboy	12	1,540	29.6	14	341	20.1	20	252	15.8	12	193	27.6
15	13	DYLAN SCOTT/New Truck	10	1,588	30.5	27	206	12.1	18	275	17.2	16	159	22.7
16	14	C. YOUNG w/M. TENPENNY/At The End Of A Bar	14	1,119	21.5	21	240	14.1	11	434	27.1	25	91	13.0
17	15	JON PARDI/Last Night Lonely	16	1,024	19.7	31	178	10.5	13	405	25.3	6	207	29.6
18	16	ERNEST f/MORGAN WALLEN/Flower Shops	19	880	16.9	23	228	13.4	16	305	19.1	19	142	20.3
20	17	JUSTIN MOORE/With A Woman You Love	17	983	18.9	18	248	14.6	24	190	11.9	17	154	22.0
26	18	KANE BROWN/Like I Love Country Music	18	964	18.5	17	270	15.9	15	377	23.6	24	109	15.6
21	19	KENNY CHESNEY/Everyone She Knows	20	880	16.9	35	128	7.5	17	278	17.4	18	151	21.6
22	20	JACKSON DEAN/Don't Come Lookin'	24	657	12.6	3	593	34.9	23	198	12.4	33	41	5.9

MARKET AIRPLAY PROFILE - BOISE



Rank		KAWO	KIZN	Total
1	LUKE COMBS/Doin' This	66	33	99
2	THOMAS RHETT/Slow Down Summer	50	38	88
3	CODY JOHNSON/Til You Can't	38	43	81
4	MORGAN WALLEN/Wasted On You	33	46	79
5	JASON ALDEAN/Trouble With A Heartbreak	42	35	77
6	WALKER HAYES/AA	42	34	76
7	COLE SWINDELL & LAINEY WILSON/Never Say Never	36	39	75
8	TIM MCGRAW/7500 OBO	41	30	71
9	J. ALDEAN & C. UNDERWOOD/If I Didn't Love You	23	45	68
10	PARMALEE/Take My Name	32	33	65
11†	KEITH URBAN/Wild Hearts	31	31	62
11†	JORDAN DAVIS f/LUKE BRYAN/Buy Dirt	20	42	62
13	JAKE OWEN/Best Thing Since Backroads	26	34	60
14	SCOTTY MCCREERY/Damn Strait	25	32	57
15†	MORGAN WALLEN/Sand In My Boots	11	44	55
15†	JON PARDI/Last Night Lonely	26	29	55
17	DUSTIN LYNCH f/MACKENZIE PORTER/Thinking 'Bout You	13	41	54
18†	C. PEARCE & A. MCBRYDE/Never Wanted To Be That Girl	21	31	52
18†	MAREN MORRIS/Circles Around This Town	29	23	52
20	C. YOUNG w/M. TENPENNY/At The End Of A Bar	14	32	46

FLASHBACK NUMBER ONES

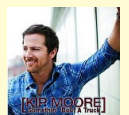
1 YEAR AGO
SAM HUNT
Breaking Up Was Easy
In The 90s



5 YEARS AGO
LUKE COMBS
Hurricane (2nd Week)



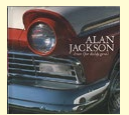
10 YEARS AGO
KIP MOORE
Somethin' 'Bout A Truck



15 YEARS AGO
BILLY CURRINGTON
Good Directions



20 YEARS AGO
ALAN JACKSON
Drive (For Daddy Gene)
(2nd Week)



COUNTRY AIRCHECK ACTIVITY

C. BECKHAM & L. ELL/Can't Do Without Me (Wheelhouse/Stoney Creek)
Remains at 45*
1862 points, 638 spins; No adds

CLAY WALKER/Catching Up With An Ol' Memory (Show Dog)
Moves 49-46*
1710 points, 515 spins
2 adds: **WQMX, WUBL**

LITTLE BIG TOWN/Hell Yeah (Capitol)
Moves 46-47*
1672 points, 458 spins
3 adds: **KKBQ, WBEE, WNCY**

JOE NICHOLS/Good Day For Living (Quartz Hill)
Moves 50-48*
1634 points, 540 spins
1 add: **WKDF***

DILLON CARMICHAEL/Son Of A (Riser House)
Moves 47-49
1614 points, 577 spins
1 add: **KDRK**

BRETT ELDREDGE/Songs About You (Warner/WMN)
Moves 48-50
1529 points, 391 spins
1 add: **WQMX**

CAITLYN SMITH/Downtown Baby (Monument)
1407 points, 446 spins
1 add: **WRNS**

RESTLESS ROAD/Growing Old With You (RCA)
1400 points, 342 spins
1 add: **WOLF**

KASSI ASHTON/Dates In Pickup Trucks (Interscope/MCA)
1387 points, 439 spins
2 adds: **KCYY, WRBT**

ELVIE SHANE/County Roads (Wheelhouse)
1383 points, 549 spins; No adds

ADD DATES

Send yours to adds@countryaircheck.com

MAY 31
ASHLEY COOKE w/BRETT YOUNG/Never 'Til Now
(Back Blocks/Big Loud/BMLGR)

JUNE 6
CODY JOHNSON/Human (Warner/Cojo/WMN)
ELLE KING f/DIERKS BENTLEY/Worth A Shot (RCA/Columbia)
JORDAN DAVIS/What My World Spins Around (MCA)
AARON GOODVIN/Boy Like Me (Reviver)

JUNE 13
CARLY PEARCE/What He Didn't Do (Big Machine)

CHECK OUT

JUNE 3
Eli Young Band Love Talking (Valory)
Chris Young Famous Friends Deluxe Edition (RCA)
Twinnie Welcome To The Club (BMG/Nashville)

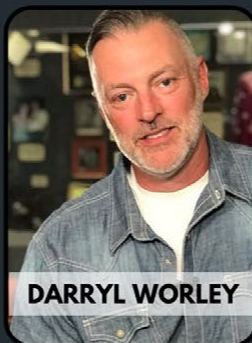
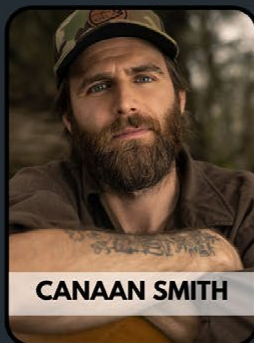


JUNE 10
Carrie Underwood Denim & Rhinestones (Capitol)
Bill Anderson As Far As I Can See: The Best Of (MCA)

©2022 Country Aircheck™ — All rights reserved. Sign up free at www.countryaircheck.com. Send news to news@countryaircheck.com

ACOUSTIC JAM

A Benefit Concert For Camp Broadcast



WEDNESDAY, JUNE 15, 2022

5441 PARK PLACE, ROSEMONT, IL 60018 • JOESLIVEROSEMONT.COM • 847-261-0392



LW	TW	Artist/Title (Label)	Points	+/- Points	Plays	+/- Plays	Stations	ADDS
4	1	JASON ALDEAN Trouble With A Heartbreak (Macon Music/Broken Bow) ✓	10847	1645	2078	318	48	0
3	2	WALKER HAYES/AA (Monument)	10432	896	2014	209	49	0
1	3	LUKE COMBS/Doin' This (River House/Columbia)	10310	-1269	2043	-193	46	0
6	4	MORGAN WALLEN/Wasted On You (Big Loud) ✓	10060	1382	1911	249	49	0
5	5	THOMAS RHETT/Slow Down Summer (Valory)	9324	465	1856	111	48	0
8	6	PARMALEE/Take My Name (Stoney Creek) ✓	8883	1477	1759	282	48	0
9	7	SCOTTY MCCREERY/Damn Strait (Triple Tigers)	8192	907	1628	143	48	0
11	8	TIM MCGRAW/7500 OBO (Big Machine)	7832	728	1546	121	45	0
12	9	MIRANDA LAMBERT/If I Was A Cowboy (RCA)	7596	626	1417	65	47	0
10	10	KEITH URBAN/Wild Hearts (Capitol)	7132	6	1454	9	45	0
13	11	JAKE OWEN/Best Thing Since Backroads (Big Loud)	7051	141	1370	14	47	0
15	12	MAREN MORRIS/Circles Around This Town (Columbia)	6534	432	1254	66	47	0
18	13	JON PARDI/Last Night Lonely (Capitol) ✓	6405	925	1234	169	48	0
17	14	DYLAN SCOTT/New Truck (Curb)	6233	509	1164	74	47	1
16	15	ERNEST f/MORGAN WALLEN/Flower Shops (Big Loud)	5772	-164	1080	-49	49	0
20	16	CARRIE UNDERWOOD/Ghost Story (Capitol)	5617	791	1014	144	49	3
19	17	KENNY CHESNEY/Everyone She Knows (Blue Chair/Warner/WEA)	5549	439	1023	69	46	0
21	18	CHRIS YOUNG w/MITCHELL TENPENNY/At The End Of A Bar (RCA)	5306	603	1068	122	46	0
22	19	JUSTIN MOORE/With A Woman You Love (Valory)	4922	407	957	72	47	1
7	20	C. PEARCE & A. MCBRYDE/Never Wanted To Be That Girl (Big Machine/WMN)	4751	-3736	970	-679	43	0
25	21	KANE BROWN/Like I Love Country Music (RCA) ✓	4430	1948	870	356	47	14
23	22	OLD DOMINION/No Hard Feelings (Arista)	3698	312	678	66	44	2
24	23	DUSTIN LYNCH/Party Mode (Broken Bow)	3176	646	628	109	46	3
28	24	JACKSON DEAN/Don't Come Lookin' (Big Machine)	2836	635	555	113	46	5
26	25	LEE BRICE/Soul (Curb)	2399	99	444	14	41	1
27	26	FRANK RAY/Country'd Look Good On You (Stoney Creek)	2381	96	473	22	41	1
14	27	HARDY/Give Heaven Some Hell (Big Loud)	2381	-4113	493	-697	42	1
32	28	MITCHELL TENPENNY/Truth About You (Riser House/Columbia)	2094	363	380	50	40	4
29	29	ZAC BROWN BAND/Out In The Middle (Home Grown/Warner/WAR)	2001	-22	383	-2	36	0
33	30	JIMMIE ALLEN/Down Home (Stoney Creek)	1884	194	352	26	33	1

©2022 Country Aircheck™ All rights reserved. Sign up at countryaircheck.com • Send news to news@countryaircheck.com ✓=Top 5 Point Gainers

**BROADCASTERS
FOUNDATION OF
AMERICA**

Your gift will help us reach every broadcaster in need.

[Learn more](http://www.broadcastersfoundation.org) www.broadcastersfoundation.org

LW	TW	Artist/Title (Label)	Points	+/-	Points	Plays	+/-	Plays	Stations	Adds
30	31	GABBY BARRETT /Pick Me Up (Warner/WAR)	1868	69	348	21	36	2		
31	32	MORGAN WADE /Wilder Days (Arista)	1839	40	372	9	41	2		
36	33	JELLY ROLL /Son Of A Sinner (BMG/Stoney Creek)	1570	301	328	52	39	4		
35	34	BRETT YOUNG /You Didn't (BMLGR)	1502	156	251	23	24	1		
34	35	RUSSELL DICKERSON f/JAKE SCOTT /She Likes It (Triple Tigers)	1414	-76	214	-11	15	0		
37	36	KELSEA BALLERINI /Heartfirst (Black River)	1345	95	252	15	31	0		
38	37	LADY A /What A Song Can Do (BMLGR)	1198	-31	241	-5	24	0		
39	38	CAROLINE JONES /Come In (But Don't Make Yourself...) (Mailboat/New Revolution)	1118	-88	203	-13	24	0		
40	39	CONNER SMITH /Learn From It (Valory)	934	-20	187	0	22	0		
44	40	INGRID ANDRESS w/SAM HUNT /Wishful Drinking (Atlantic/Warner/WEA)	892	145	188	27	30	4		
41	41	TYLER BRADEN /Try Losing One (Warner/WMN)	860	90	89	12	7	0		
42	42	BAILEY ZIMMERMAN /Fall In Love (Warner)	843	85	103	13	4	0		
43	43	LITTLE BIG TOWN /Hell Yeah (Capitol)	827	70	117	10	11	0		
52	44	CHRIS STAPLETON /Joy Of My Life (Mercury)	763	189	134	37	21	1		
45	45	THOMPSON SQUARE /Country In My Soul (Quartz Hill)	726	16	135	5	13	2		
46	46	TIM DUGGER /Heart Of A Small Town (Curb)	715	15	127	3	10	0		
47	47	LUKE COMBS /Tomorrow Me (River House/Columbia)	681	-4	73	-15	4	0		
49	48	PRISCILLA BLOCK /My Bar (InDent/Mercury)	669	13	152	3	16	0		
48	49	RUTHIE COLLINS /Hypocrite (Sidewalk/Curb)	667	1	116	-12	15	0		
53	50	RANDY HOUSER /Note To Self (Magnolia)	606	35	103	5	8	0		
51	51	JOE NICHOLS /Good Day For Living (Quartz Hill)	603	26	109	4	7	0		
54	52	CHRIS STAPLETON /Cold (Mercury)	600	30	60	3	1	0		
Debut	53	TYLER HUBBARD /5 Foot 9 (EMI Nashville)	538	538	102	102	15	8		
56	54	RESTLESS ROAD /Growing Old With You (RCA)	527	10	58	1	2	0		
55	55	KAMERON MARLOWE /Giving You Up (Columbia)	512	-26	85	-4	6	0		
Re-Enter	56	BRETT ELDREDGE /Songs About You (Warner/WMN)	479	116	73	11	15	1		
Debut	57	BROTHERS OSBORNE /Midnight Rider's Prayer (EMI Nashville)	470	40	47	4	1	0		
50	58	KAMERON MARLOWE /Steady Heart (Columbia)	460	-120	46	-12	1	0		
Re-Enter	59	MADDIE & TAE /Strangers (Mercury)	450	30	45	3	1	0		
60	60	IAN MUNSICK f/CODY JOHNSON /Long Live Cowgirls (Warner/WEA)	450	10	45	1	1	0		

©2022 Country Aircheck™ All rights reserved. Sign up at countryaircheck.com • Send news to news@countryaircheck.com ✓=Top 5 Point Gainers



Give to Get Your Shirt

Donate Now

