

# COUNTRY AIRCHECK

WEEKLY

December 10, 2018, Issue 631

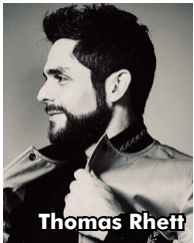
## Year End Preview: Music & More

Country Aircheck's year-end print issue hits newsstands next week. Just kidding. Newsstands aren't a thing anymore. Nevertheless, the issue will be out both physically and digitally, and will feature a final 2018 music analysis – Top 100 songs, top performing artists, label chart share and every song that hit the Top 15. A recap of the year's top stories, an awards week photo montage and a preview of first quarter music releases are also covered. Finally, in The Interview, BBR Music Group's **Jon Loba** discusses the BMG acquisition, the industry's biggest issues and a new venture with the group's top artist. Until next week, here's a preview:

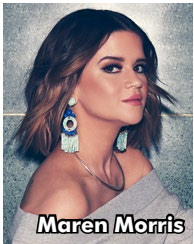


Jon Loba

**Best Of The Best:** The No. 1 most-heard song of the 2018 chart year is **Kane Brown's** "Heaven," promoted by Sony/Nashville's RCA promotion team; written by Lindsay Rimes, Matt McGinn and Shy Carter; and published by EMI Blackwood Music, Inc./Koala T Tunes (BMI), Smackworks Music/Smack Blue, LLC administered by Kobalt (SESAC) and You Want How Much Of What Publishing (BMI)/Worldwide EMG Music B (BMI). For reference, the 2018 chart year ran Nov. 12, 2017-Nov. 10, 2018. See the year's Top 10 songs below.



Thomas Rhett

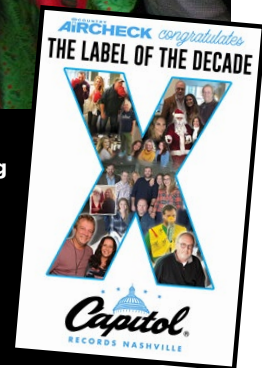


Maren Morris

On the artist side, Valory's **Thomas Rhett** is the Overall and Male Top Performer. He posted four Top 15 songs – No. 1s "Marry Me" and "Life Changes," as well as "Unforgettable" (a chart-topper at the end of 2017) and the still climbing "Sixteen." Female Top Performer goes to Columbia's **Maren Morris**, powered by the No. 1 "I Could Use A Love Song" and "Rich," which was still on the chart as 2018 closed. BMLG Records' **Florida Georgia Line** are the Duo/Group Top Performer, led by chart-topper "Simple" and pairings with Bebe Rexha and Morgan Wallen on No. 1s "Meant To Be" and "Up" (continued on page 11)



**Gluten For Punishment:** Country Aircheck presents Capitol with a cake commemorating their tenth consecutive chart share victory. Pictured (back, l-r) are CA's Chuck Aly, the label's David Friedman, CA's April Johnson, the label's Bobby Young, Donna Hughes, Brent Jones and Chris Schuler and CA's Lon Helton; (front, l-r) the label's Ashley Laws and Katelyn Lester.



## Trivial Pursuit: Country Edition

Last week's issue (view [here](#)) featured an interview with Belmont University's Curb Professor of Music Industry History **Don Cusic** about his new book *Nashville Sound: An Illustrated Timeline*, which tells the history of the city's music industry from the 19th century through today. Here are a few facts about Music City you may not know:



Don Cusic

- In 1821, a fiddle player joined the TN legislature when Davy Crockett was elected. He

©2018 Country Aircheck™ — All rights reserved. Sign up free at [www.countryaircheck.com](http://www.countryaircheck.com). Send news to [news@countryaircheck.com](mailto:news@countryaircheck.com)

# LADIES IN THE '90S

9 NEW APPS THIS WEEK  
 WKGX KSKS KORK WPOR WTGE  
 WQXB WAVV KAJA WOJI

LAUREN ALAINA

19

WATCH LAUREN PERFORM "LADIES IN THE '90S" ON DICK CLARK'S NEW YEAR'S ROCKIN' EVE ON ABC DEC 31 AT 8/7c

# BRANTLEY GILBERT + LINDSAY ELL WHAT HAPPENS IN A SMALL TOWN



BRANTLEY GILBERT  
+ LINDSAY ELL

NEW SINGLE  
AVAILABLE THIS FRIDAY  
DECEMBER 14<sup>TH</sup>

WHAT HAPPENS  
IN A SMALL TOWN



THOMAS  
RHETT

JUSTIN  
MOORE

DELTA  
RAE

REBA  
MCENTIRE



HAPPY HOLIDAYS FROM **THE VALORY MUSIC CO.**

ELI YOUNG  
BAND

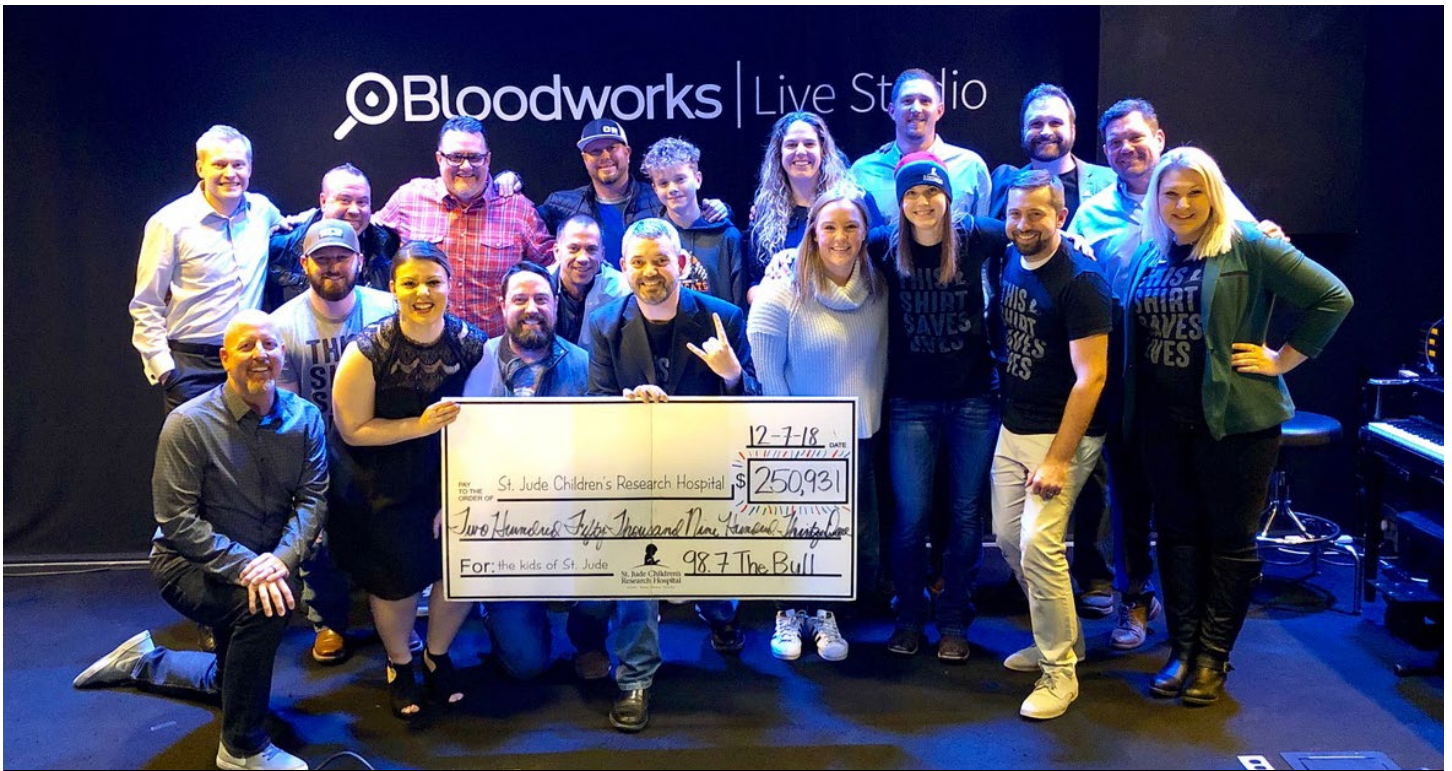
Tyler  
Rich

AARON  
LEWIS

BRANTLEY  
GILBERT

THANK YOU COUNTRY RADIO FOR AN AMAZING 2018!

GEORGE, CHRIS, ASHLEY, AMY, DON, ADAM, BROOKE, CHRISTY, LAUREN



**S'moregon:** KUPL/Portland staffers celebrate their \$250,931 haul raised during the St. Jude Country Cares Radiothon.

served in Nashville and was elected to Congress in 1827. In 1836, he took his fiddle to the Alamo in TX, where he reportedly played it during the siege.

- WSM radio (formed by the National Life and Accident Insurance Company) went on the air Oct. 5, 1925. Performers on early broadcasts included Dr. Bate's Possum Hunters, the Crook Brothers, Uncle Dave Macon and DeFord Bailey.

- On Dec. 4, 1944 the late Eddy Arnold held the first major label recording session in Nashville, his first for RCA Victor, in a WSM-AM studio. The session included his now-classic "Cattle Call."

- In September 1956, Charlie Lamb



formed the *Country Music Reporter*, the first Nashville-based trade magazine. Lamb is credited with creating the term "bullet," which indicated a fast-moving single on the charts.

- The Country Music Association was formed in 1958. Faron Young and Ferlin Husky's manager Hubert Long (the CMA's first Secretary and Dir./Publicity) offered a cubicle in the old Exchange Building on lower Church Street and provided a typewriter. Harry Stone was hired as the first Exec. Dir. and Jo Walker as book-keeper/typist. Stone quit after 10 months because there was not enough to pay him. Walker stayed because, "I could type and Harry couldn't," she says.

- In their first survey of Country radio in 1961, the CMA found there were only 81 stations playing country music full-time.

- In the 1966 *Saturday Evening Post* article "That New Sound from Nashville," writer Charles Portis says, "This music has a new

©2018 Country Aircheck™ — All rights reserved. Sign up free at [www.countryaircheck.com](http://www.countryaircheck.com). Send news to [news@countryaircheck.com](mailto:news@countryaircheck.com)

# CONGRATULATIONS KELSEA BALLERINI ON YOUR GRAMMY<sup>®</sup> NOMINATION

*UNAPOLOGETICALLY* - BEST COUNTRY ALBUM



**BLACK RIVER**  
ENTERTAINMENT



COUNTRY  
**AIRCHECK**  
MY TUNES: MUSIC THAT SHAPED MY LIFE



Ryan  
McKiddy

WSIX/Nashville APD/MD/night host **Ryan McKiddy** discusses his most influential music:

**1. Sam Hunt's *Montevallo*:** It's crazy to think that Sam has only put out one studio album. So many solid songs and it's one of those albums you can listen to front-to-back countless times and never get sick of it.  
**2. Jay-Z and Justin Timberlake's *Legends of the Summer* concert at Chicago's Soldier Field in 2013:** Seeing both of them

on the same bill in my home city was a super cool experience. (See the [setlist here.](#))

**3. George Strait:** I've always been a fan, but it wasn't until I moved to San Antonio that I became an even bigger fan of King George.

**4. Tim McGraw's "Something Like That":** It's one of the songs that made me a fan of country music. It still sounds so good, whether it's being played on the radio or if it comes on at a bar.

**5. Drake:** I've always loved hip-hop and Drake never disappoints with his albums and singles over the years. I do feel sorry for my friends at CHR and Urban radio who have to schedule logs, because of all the Drake songs and tracks he's featured on.  
• **Highly-regarded music you've never heard:** I haven't spent much time with any of Bruce Springsteen's albums. Something that I definitely need to change.

• **"Important" piece or style of music you just don't get:** I've never really been a big classic rock guy. I respect the music and artists a ton—I just have never been one to listen to it in my free time.

• **An album you listened to incessantly:** Luke Combs' debut *This One's for You* is still one of my favorites. You can't deny his style, songwriting and great hooks.

• **An obscure or non-country song everyone should listen to right now:** I've been digging the new Halsey song "[Without Me](#)." I feel like it's only a matter of time until she does a collab with a country artist.

• **Music you'd rather not admit to enjoying:** I'm not ashamed to admit that I know the words to many songs by boy bands like the [Backstreet Boys](#) and \*NSYNC.

acceptance and a new dignity ... It's not, you know, the old hillbilly stuff, the nasal voices, those guitars thumping and all." A *Newsweek* article from around the same time reported, "What has made the Nashville Sound an all-American sound is the evolution of country music toward popular taste. The raw, nasal 'hillbilly' sound, alien to urban ears, has gradually been discarded."

• The *15th Grammy Awards* were held in Nashville at the Tennessee Theater March 3, 1973. It was the third live broadcast, with the first two held in Los Angeles and New York. The decision to hold it in Nashville caused controversy and ABC, which had aired the first two shows, refused to participate. NBC also said no. When the CBS airing received a 53 share of the audience, that network got the *Grammys* contract. ABC, trying to recover and compete, created the *American Music Awards*.

• During CRS in March 1974 at the Airport Hilton Hotel, bars were closed during meetings to ensure attendance. There were 290 disc jockeys and radio execs at the conference, and research showed the average Country radio station played 40-70 records with more than two-thirds by non-country artists. The number of full-time Country stations was 856.

• In 1980 there were 1,534 full-time Country stations. In the spring of '80, CRS had 400 registrants representing 140 stations.

• In June 1982 the annual Country Music Fan Fair was held at a new location, the Tennessee State Fairgrounds. Approximately 24,000 fans attended.

Schedule an interview with Cusic [here](#); buy the book [here](#).

—Wendy Newcomer

## Chart Chat

Congrats to **Mitchell Tenpenny**, **Steve Hodges**, **Shane Allen** and the **Columbia** promotion crew on landing this week's No. 1 with "Drunk Me." The song is Tenpenny's debut single and was written by **Jordan M. Schmidt**, **Justin Wilson** and Tenpenny.

And kudos to Allen and Columbia on the Daily Double, landing 28 adds for **Luke Combs'** "Beautiful Crazy," topping this week's board.



Mitchell  
Tenpenny

## News & Notes

Triple Tigers' **Scotty McCreery** and wife **Gabi Dugal McCreery** will appear on the cover of the Winter-Spring 2019 issue of *Southern Bride* in early Jan.

**Lauren Alaina** and **Kane Brown** have been added to the

©2018 Country Aircheck™ — All rights reserved. Sign up free at [www.countryaircheck.com](http://www.countryaircheck.com). Send news to [news@countryaircheck.com](mailto:news@countryaircheck.com)

Ending the year on a high note!  
**CA/MB: \*39 +114**  
**BB: \*39 +121**  
New today include  
WFUS/Tampa, WIL/St. Louis,  
KWEN/Tulsa, KJUG/Visalia,  
WKXC/Augusta and WCYQ/Knoxville.  
Already committed for Jan. 14:  
**KKGO/Los Angeles**

BBB MEDIA  
WHEELER  
BMG

OVER 400 MILLION ON-DEMAND STREAMS

# CODY JOHNSON

IN 2018

## ON MY WAY TO YOU

NEARING TOP 25

160K TRACK EQUIVALENTS SOLD TO DATE

18 MILLION ON-DEMAND STREAMS

OVER 270 THOUSAND HARD TICKETS SOLD



STREAMS

69M

FANS

2M

HOURS

3M

COUNTRIES

65



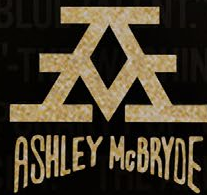
LOOKING FORWARD TO A BIG 2019!

GRAMMY® NOMINEE FOR

# BEST COUNTRY ALBUM

BRAND  
NEW  
SINGLE

GIRL  
GOIN'  
NOWHERE



ON YOUR DESK NOW  
IMPACTING 1/14







**Gobble-let Overfloweth: SOLID** raises money for The Onsite Foundation at their 33rd Annual Turkey Bowl Flag Football Tournament. Pictured (l-r) are CMS' Casey Elliott, CMT's Erin Mercer, the foundation's Deanna Wantz and City National Bank's Bailey Lathem.

lineup of Dick Clark's New Year's Rockin' Eve with Ryan Seacrest 2019, airing live from Times Square on **ABC**.

Arista's **Lanco** have extended their headlining *Hallelujah Nights Tour* into May with UK shows and added **Caylee Hammack** and **Bailey Bryan** as support. Schedule [here](#).

**Kenii Thomas'** short-documentary film, *Downrange*, An *Advanced Leadership Experience*, was nominated for two Emmys for Cinematography and Human Interest Feature.

**GAC** host and broadcast personality **Suzanne Alexander** will host the 60th Annual Wrangler National Finals Rodeo for the eighth consecutive year on **CBS Sports**. The event runs Dec. 6-15 in Las Vegas.

Artist manager **Jim Halsey** has launched the **Starmaker360** app. Subscribers can view interviews and information about how to build a successful career in the entertainment and music business. Details [here](#).

**CMT** has become the official partner for the second annual *Live In The Vineyards Goes Country* event in Napa May 14-16. The 2019 performance lineup is TBA.

### The Week's Top Stories

Full coverage at [countryaircheck.com](http://countryaircheck.com).

- **Entercom/Houston's Bruce Logan** is exiting; **Chris Huff** was named **KILT** interim PD. (CAT 12/6-7)
- **BMG's Zach Katz** is leaving. (CAT 12/5)
- **Lance Tidwell** was named Dir./Programming for **Cumulus/Detroit**. (CAT 12/5)
- **KEGA/Salt Lake City, UT's Monroe** was upped to PD. (CAT 12/4)
- **Brad Hansen** joined **Townsquare/Ft. Collins, CO** as OM. (CAT 12/3)

©2018 Country Aircheck™ — All rights reserved. Sign up free at [www.countryaircheck.com](http://www.countryaircheck.com). Send news to [news@countryaircheck.com](mailto:news@countryaircheck.com)

NEW YEAR ——— NEW TOUR ——— NEW MUSIC



IT'S JUST A LITTLE TOWN SQUARE,  
**MIDDLE OF NOWHERE.**  
 AIN'T EVEN **BIG ENOUGH**  
**TO BE A MAP DOT.**




**IMPACTING 1/14**



HAPPY HOLIDAYS FROM **CURB**  
RECORDS

MB: 35\* • BDS: 34\*



**RODNEY ATKINS**  
CAUGHT UP IN THE COUNTRY

**#11** CONSUMPTION PER  
SPIN (6.4 CPS)

MB: 42\* • BDS: 37\*



**LEE  
BRICE**  
RUMOR

**#3** CONSUMPTION PER  
SPIN (17.3 CPS)

SALES +30% • STREAMING +12%

IMPACTING 1/14



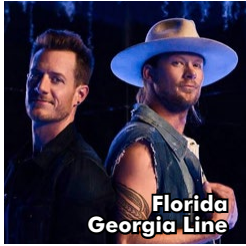
**DYLAN  
SCOTT** *NOTHING  
TO DO TOWN*

NEW YEAR – NEW TOUR – NEW MUSIC

## Year End Preview: Music & More

(continued from page 1)

Down," respectively. MCA's **Jordan Davis** is the New Artist Top Performer on the strength of his No. 1 debut "Singles You Up."



See the Top 10 artists in each category, as well as the annual "By The Numbers" analysis in the issue.

Extending an already historic run, Capitol is the top chart share label for the tenth year in a row. With 12.1% of all airplay and a 3.8% margin above the second place imprint, the Capitol team have cemented

a "Label of the Decade" designation.

**The Interview:** Amid discussion of merging the BMG and BBR cultures, the closing of imprint Red Bow, gender balance and the state of radio, the group's EVP Jon Loba addressed flagship artist Jason Aldean's contract status.

"We have another album and, while I don't count my chickens before they hatch, I certainly can't imagine him being anywhere else," he says. "And I don't think he wants to be anywhere else. This is the house that Jason built, no doubt."

Later in the interview, Loba hints at an expanding relationship with Aldean. "He's got some of the best ears and instincts in the business," Loba says. "When he turned in this last album, I called and told him I don't ever want him to stop doing what he's doing, but I'd love to have him in our A&R department. A couple months later he called me back to ask if I remembered the conversation.



Jordan Davis

He had some things he wanted to do, so we're getting ready to do a joint venture for him to have his own imprint. We'll use existing staff but let his ears and production run free. He's such a great song guy and really knows brands."

All that and more in the December print edition of Country Aircheck. Here are the Top 10 Songs of 2018:

### Top 10 Songs of 2018

- 1 **KANE BROWN**/Heaven (RCA)
- 2 **LUKE COMBS**/One Number Away (River House/Columbia)
- 3 **JORDAN DAVIS**/Singles You Up (MCA)
- 4 **DAN + SHAY**/Tequila (Warner Bros./WAR)
- 5 **LUKE BRYAN**/Most People Are Good (Capitol)
- 6 **D.L. MURPHY f/K. CHESNEY**/Everything's Gonna Be Alright (Blue Chair/Reviver)
- 7 **KENNY CHESNEY**/Get Along (Blue Chair/Warner Bros./WEA)
- 8 **BEBE REXHA f/FGL**/Meant To Be (WBR/BMLGR)
- 9 **JASON ALDEAN**/You Make It Easy (Broken Bow)
- 10 **DYLAN SCOTT**/Hooked (Curb)

**Lon Helton**, [lon@countryaircheck.com](mailto:lon@countryaircheck.com)

**Chuck Aly**, [chuck@countryaircheck.com](mailto:chuck@countryaircheck.com)

**Wendy Newcomer**, [wendy@countryaircheck.com](mailto:wendy@countryaircheck.com)

**Caitlin DeForest**, [caitlin@countryaircheck.com](mailto:caitlin@countryaircheck.com)

**Monta Vaden**, [monta@countryaircheck.com](mailto:monta@countryaircheck.com)

(615) 320-1450

©2018 Country Aircheck™ — All rights reserved. Sign up free at [www.countryaircheck.com](http://www.countryaircheck.com). Send news to [news@countryaircheck.com](mailto:news@countryaircheck.com)

**Thank you for your Amazing support ~ Happiest of Holidays**

**AVAILABLE JOBS**

Here's a list of job seekers and open gigs. Not listed? Send info [here](#) and we'll include you in a future update.

**MIDWEST**

NRG **KFGE/Lincoln, NE** has an immediate opening for an afternoon host. Materials to OM **Steve Albertsen** [here](#).

**Cumulus/Detroit** has a Dir./Digital Content opening for its three-station cluster, including Country **WDRQ** (NASH FM). Apply [here](#).

Marshalltown Broadcasting **KXIA/Marshalltown, IA** is searching for a morning co-host. Airchecks and résumés to PD **JD Justice** [here](#).

**Townsquare/Grand Rapids, MI** is searching for an OM. Airchecks and résumés to **Rick Sarata** [here](#).

Bliss **WJVL/Janesville, WI** has an opening for a part-time weekender. At least one year on-air experience is required. Airchecks and résumés to PD **Justin Brown** [here](#).

**KSE Radio Ventures/Denver** is searching for an engineer. Apply [here](#).

**NORTHEAST**

Townsquare **WOKQ/Portsmouth, NH** is looking for a Brand Manager. Joe Limardi will continue in the role until a replacement is found. Materials to Townsquare New England ROM **Herb Ivy** [here](#).

Aloha Station Trust **WFRE/Frederick, MD** has an opening for a weekend/fill-in talent. Those living in the Frederick, MD, Washington, DC and Baltimore MD area can send airchecks and résumés to PD **Brian Mo** [here](#).

**Binnie/Portland, ME** has an opening for an on-air Promotions Assistant. The cluster includes Country **WTHT**. Send airchecks and résumés to OM **Stan Bennett** [here](#).

**Binnie Media/Maine** is searching for a Dir./Traffic and a part-time Sales Assistant in Portland, for its stations which include Country **WTHT** and **WBQQ**. Send materials [here](#).

**Townsquare/Hudson Valley, NY** has openings for part-time on-air talent and digital contributors. The cluster includes Country **WKXP & WZAD** as well as Hot AC WCZK & Classic Rock WPDH. Materials to OM **Joe Limardi** [here](#).

**SOUTHEAST**

iHeartMedia/Tuscaloosa, AL has an opening for an OM and PD for **Country WTXT**. Airchecks and résumés to Area SVP/Programming **Tom Hanrahan** [here](#).

Beasley **WQYK/Tampa PD Travis Daily** is seeking an experienced afternoon drive producer. Materials to Daily [here](#).

Max Media's **WGH/Norfolk** has a morning opening. Airchecks and résumés to VP/Programming **Rusty James** [here](#).

Cumulus' **WSM-FM (Nash Icon)/Nashville** has an opening for a part-timer. Duties will also include the Icon Network. Flexibility and on-air experience is required (no beginners). Materials to VP/Country **Charlie Cook** [here](#).

Cumulus' **WSM-FM (Nash Icon)/Nashville** is in search of on-air traffic reporters. Materials to VP/Country **Charlie Cook** [here](#).

Guaranty **WTGE/Baton Rouge** has an opening for a middayer. Three to five years experience in Country is required, along with strong production, digital and social media skills. Airchecks and résumés [here](#).

**Average Joes Entertainment** is seeking entry/intermediate level graphic design and video production applicants for full-time employment. More info [here](#); submit résumé and portfolio [here](#).

Cumulus **WKDF/Nashville** is seeking part-time air talent for weekends and fill-ins. Three years of on-air experience and residing in the Nashville area are required. Airchecks and résumés to PD **John Shomby** [here](#).

Bristol **WXBQ/Johnson City, TN** is still searching for a PD to succeed Bill Hagy. The right candidate will also have on-air responsibilities. A minimum of five years as a Country PD is required. Airchecks and resumes [here](#).

Entercom **WPAW/Greensboro, NC** has an opening for an afternoon jock. Apply [here](#).

**Vallie Richards Donovan Consulting** has an immediate PM drive opening at a legendary east coast Country station. Send airchecks and résumés to "Country Jobs" [here](#).

Summit **WQNU/Louisville** is looking for an APD/MD/on-air host. Submit materials [here](#).

**SOUTHWEST**

**Cox/San Antonio** is searching for a VP/MM. Reach out to RVP/Radio **Rob Babin** [here](#).

Cumulus **KSCS/Dallas** is searching for a morning co-host for *Hawkeye In The Morning*. Airchecks and résumés to PD Mac Daniels [here](#).

**Cox Media Group/Houston** is searching for a Digital Media Sales Specialist. Apply [here](#).

LCKM **KTFW/Dallas** has an unspecified part-time on-air opening for an experienced talent. Contact PD **Mike Crow** [here](#).

Noalmark **KBIM/Roswell, NM** has an opening for a morning host. Materials to GM **Darryl Burkfield** [here](#).

Entercom **KILT/Houston** has immediate openings for part-timers. Only applicants living in the Houston area are being considered at present. Send airchecks [here](#); apply [here](#).

**WEST COAST**

Entercom **KKWF/Seattle** is searching for an afternoon drive host. Apply [here](#).

**Cherry Creek/St. George, UT** has an opening for a Dir./Production. The cluster includes Country **KCIN** and **KIYK**, and the job comes with co-host responsibilities on cluster AC KREC. Materials including production and imaging samples [here](#).

**OTHER**

**Johnstone Entertainment Agency** is searching for an experienced agent to assist booking for the band **Shenandoah**. Send résumés to **Cole Johnstone** [here](#).

**Pandora** is searching for a Head/Country Music Programming. Three to five years experience curating digital playlists or programming Country radio is required. Apply [here](#).

Consultant **Joel Raab** is looking for a Brand Manager for a Top 75 Market. Raab is also on the hunt for morning talent fro two different Top 50 Market stations. Send materials [here](#).

**Cumulus** is on the hunt for an on-air segment producer and sidekick for its nationally syndicated *The Ty Bentli Show*. Apply [here](#).

©2018 Country Aircheck™ — All rights reserved. Sign up free at [www.countryaircheck.com](http://www.countryaircheck.com). Send news to [news@countryaircheck.com](mailto:news@countryaircheck.com)

**SEARCHING**

• **Jeremy Guenther**

Formerly with Riser House, Capitol and KSSN & KMJX/Little Rock  
[jguenther01@gmail.com](mailto:jguenther01@gmail.com)  
501-590-4878

• **Chris Matthews**

Formerly with KBEB/Sacramento, KMLE/Phoenix, KAWO/Boise  
[chrismatthewsdj@gmail.com](mailto:chrismatthewsdj@gmail.com)

• **David Dean**

Formerly with KMPS/Seattle, KMLE/Phoenix  
[dave@daveandceej.com](mailto:dave@daveandceej.com)

• **Terry Cooley**

Former Radio Mankato Dir./Programming  
[Sinjin62@gmail.com](mailto:Sinjin62@gmail.com)

• **James Anthony**

Former KRMD/Shreveport PD/on-air  
[afternoondj@gmail.com](mailto:afternoondj@gmail.com)  
816-232-7915

• **Rosey Fitchpatrick**

Promotion/Marketing industry vet (MCA, Decca, Indie promo, WME)  
[roseyfitch99@gmail.com](mailto:roseyfitch99@gmail.com)  
615-944-7033

• **Tommy & Joe Johnson**

Former KUBL/Salt Lake City morning co-hosts  
[tommyjohnsonmail@gmail.com](mailto:tommyjohnsonmail@gmail.com)

• **Pam Russell**

Former UMG/Nashville VP/National Sales  
[Pamwrrussell@icloud.com](mailto:Pamwrrussell@icloud.com)

• **Shane Collins**

Former Summit Media/Louisville OM  
[ShaneC1234@gmail.com](mailto:ShaneC1234@gmail.com)

• **Ron "Keyes" Stevens**

Former KEKB/Grand Junction, CO morning host  
[ronstvn@yahoo.com](mailto:ronstvn@yahoo.com)

• **Justin Taylor**

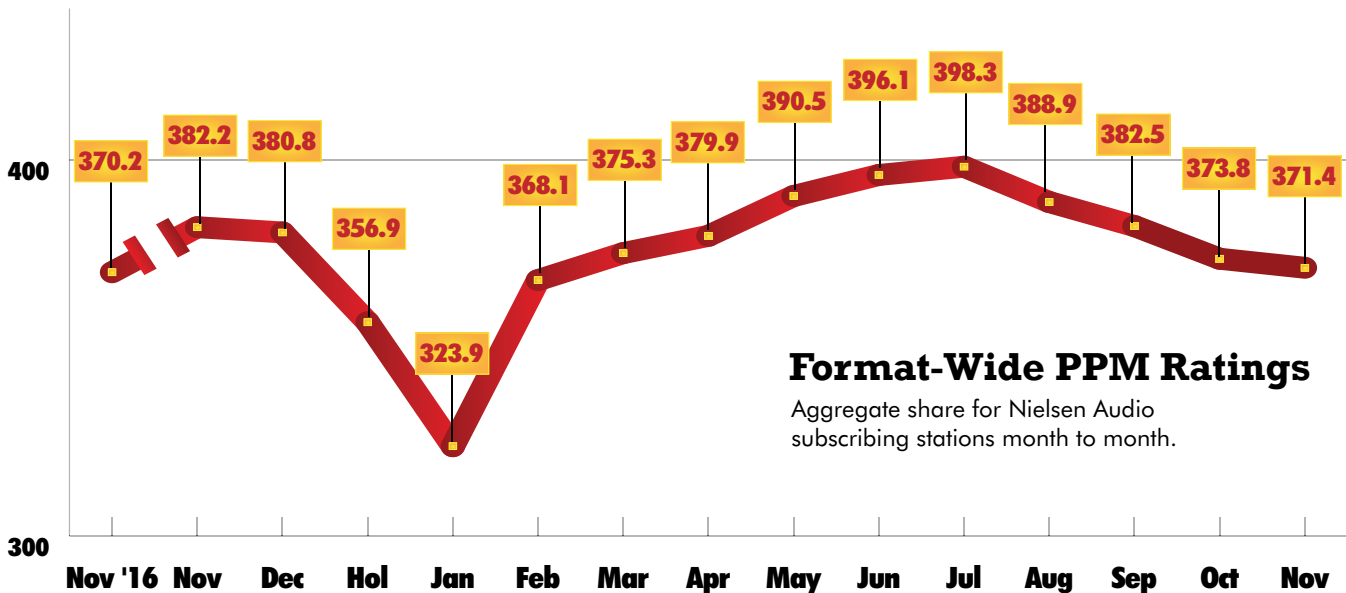
Former Broadway/Salt Lake City, UT PD/MD/on-air personality  
[TaylorTracks99@gmail.com](mailto:TaylorTracks99@gmail.com)

# November 2018 PPM Scoreboard

Country radio shares were down by 1% compared to last month. The cumulative leader was Cumulus' **KPLX/Dallas** with 1,062,600. Cumulus' **WNSH/New York** was second with 1,036,000.

Legend: A "+" indicates a Classic Country outlet; a "^" designates co-owned Country stations in the metro; "t" indicates a tie; and a "\*" indicates a station best in that statistic. Ranks are among subscribers.

Station/City	Oct 6+ Share	Rank	Nov 6+ Share	Rank	Oct Cume	Nov Cume	Station/City	Oct 6+ Share	Rank	Nov 6+ Share	Rank	Oct Cume	Nov Cume
WYCD/Detroit	5.6	7	4.9	7	758,400	684,200	WDSY/Pittsburgh	4.8	7	4.4	9	337,800	334,800
WXTU/Philadelphia	4.8	8	5.4	7	745,900	757,900	WDRQ/Detroit	2.2	17	2.2	17	407,800	458,500
WWYZ/Hartford	7.2	4	7.8	2	190,700	203,300	WDAF/Kansas City	4	10t	4.3	8t	272,300	275,800
WWKA/Orlando	5.1	8t	5	9	257,400	270,400	WCTK/Providence (Boston)	1.1	23	1	22	148,200	147,600
WUSN/Chicago	3.7	8	3.7	7t	1,012,700	1,025,700	WCTK/Providence	8.7	2t	8.2	3	350,800	331,400
WUBL/Atlanta	2.9	17	3.5	14	537,700	581,200	WCOL/Columbus, OH	14.5	1	13	1	528,700	515,400
WUBE/Cincinnati ^	8.9	3	8.9	3	417,700	455,100	WBWL/Boston	1.8	18t	2.1	17	363,400	428,800
WTQR/Greensboro	6.4	5	6.7	5	255,400	273,000	KYGO/Denver	5.8	3	5	4	453,200	449,000
WSOC/Charlotte	7.5	1	7.5	1	492,100	552,600	KWNR/Las Vegas	4.7	6	4.6	5	244,400	251,700
WSM-FM/Nashville ^	5.8	6t	6.6	3	294,500	306,900	KWJJ/Portland	3.9	10t	3.5	13	326,000	318,300
WSIX/Nashville	5.5	8t	5	9	267,600	281,400	KWBL/Denver	2.8	17t	3.5	13	297,600	310,100
WQYK/Tampa	6.7	3	5.8	3	513,500	482,400	KVET/Austin ^	5.1	6t	4.6	7	342,500	333,000
WQIK/Jacksonville	7	4	6.8	5	239,800	277,100	KUPL/Portland	3	14	3.6	12	264,400	280,300
WQDR/Raleigh	8	3t	6.3	5	303,200	282,500	KUBL/Salt Lake City	4	10t	3.8	12	336,500	302,700
WPOC/Baltimore	5.6	5	5.8	4t	409,200	423,500	KTHT/Houston ^ +	1.8	21	1.8	21	463,800	475,400
WPGB/Pittsburgh	3.4	11t	3.7	11	236,200	220,500	KSOP/Salt Lake City ^	4.2	9	5	8	292,800	273,400
WPAW/Greensboro	5.9	7	5.5	7	226,400	249,100	KSON/San Diego	4.9	6	5.2	4	405,800	413,300
WOTW/Orlando	1.5	17t	1.3	20	122,700	144,200	KSD/St. Louis	3.8	13t	4.7	8t	454,700	466,200
WNSH/New York (Nassau)	2.2	17t	2	18	128,600	132,000	KSCS/Dallas ^	4.1	5t	4.1	4t	821,500	875,500
WNSH/New York (Middlesex)	3.9	8t	3.7	7	180,500	168,100	KRTY/San Jose	4.5	6t	3.7	8	171,200	188,400
WNSH/New York	2.3	16	2.2	17	1,019,300	1,036,000	KPLX/Dallas ^	4.2	4	4.1	4t	1,075,100	1,062,600
WNNF/Cincinnati	1.8	15	1.9	16	200,700	194,700	KOKE/Austin	1.3	21	1.5	21	106,600	112,200
WNNR/Cincinnati	1.3	18	1	18t	62,300	53,100	KNUC/Seattle	2.8	18	3.1	16	443,100	449,700
WNKN/Cincinnati	1.6	16	2	15	128,500	134,800	KNTY/Sacramento	2	17	2	17	195,800	196,700
WNCB/Raleigh	2.5	12t	2.3	14t	176,900	187,100	KNIX/Phoenix	4.6	8	4.7	7	716,400	695,600
WMZQ/Washington	2.9	15	2.8	16	515,800	522,800	KNCI/Sacramento	4.3	8	5.1	5	318,400	335,900
WMIL/Milwaukee	6.2	4	7.5	3	297,500	337,200	KMNB/Minneapolis	3.3	14	3.5	14	477,200	465,000
WLHK/Indianapolis	5.7	6	5	8	334,400	304,800	KMLE/Phoenix	3.9	9	3.5	10t	639,200	644,900
WLFP/Memphis	2.4	13	2.6	13	96,500	110,200	KKYX-AM/San Antonio ^ +	1.8	20	1.8	21	135,800	131,500
WKTI/Milwaukee	3.4	12t	2.3	15	291,800	214,900	KKWF/Seattle	4.2	8	4.3	8	482,600	499,000
WKLB/Boston	3.8	9	3.8	8t	686,600	664,500	KKGO/Los Angeles	2.5	16t	2.4	18t	1,062,000	1,007,300
WKKT/Charlotte	7.1	2	6.7	3	456,800	488,300	KKBQ/Houston ^	4.7	7	4.6	6	1,022,200	1,012,600
WKIS/Miami	2.9	15	2.7	16t	381,700	374,900	KILT/Houston	3.5	14	3.6	14	958,500	943,500
WKHX/Atlanta	4	10	3.7	12	504,900	539,800	KFRG/Riverside	4.3	3t	4.5	3	319,700	358,700
WKDF/Nashville ^	4	10t	4.3	10	245,600	243,600	KFKF/Kansas City ^	4.5	8	4.1	11t	293,900	266,900
WIRK/West Palm Beach	3.2	8	3.6	7	139,200	157,000	KEGA/Salt Lake City	1.5	22	1.6	22	133,900	118,300
WIL/St. Louis	6.5	4	6.5	4	533,900	508,100	KEEY/Minneapolis	5.4	7	5.6	6	569,800	559,300
WGNE/Jacksonville	3.7	9t	4.1	9	220,000	226,100	KCYE/San Antonio ^	6.1	2	7	1	623,000	668,300
WGKX/Memphis	4.5	7t	4	9	145,100	146,900	KCYE/Las Vegas	3.1	13	3.2	12t	215,200	233,900
WGAR/Cleveland	6.8	3t	6.5	4	337,300	339,700	KBEQ/Kansas City ^	4.4	9	4.3	8t	279,800	287,500
WFUS/Tampa	5.1	4	5.2	4t	539,100	583,100	KBEB/Sacramento	2.3	14t	2.5	14t	206,400	208,500
WFMS/Indianapolis	8.3	2	8	2	318,100	305,200	KASE/Austin ^	5.3	5	5.4	4	339,100	332,900
WEBG/Chicago	1.5	22t	1.4	23t	727,700	706,400	KAJA/San Antonio	5	4t	5	6	502,600	505,100



## Format-Wide PPM Ratings

Aggregate share for Nielsen Audio subscribing stations month to month.

# AVAILABLE NOW!

## BRETT YOUNG

TICKET TO L.A.

LISTEN TO THE ALBUM

>> [HERE!!](#) <<

WATCH THE OFFICIAL  
MUSIC VIDEO

>> [NOW!!](#) <<

CATCH BRETT ON TV!

CMA Country Christmas  
(TONIGHT!! 12/10 @ 8|7c on ABC)

The TODAY Show  
(Tuesday 12/11 on NBC)

The Ellen DeGeneres Show  
(Friday 12/14 on NBC)



**BMLG**  
RECORDS

# THANK YOU TO ALL THE BELIEVERS!

LW TW Artist/Title (Label) Total Points +/- Points Total Plays +/- Plays Audience +/- Aud Stations ADDS

LW	TW	Artist/Title (Label)	Total Points	+/- Points	Total Plays	+/- Plays	Audience	+/- Aud	Stations	ADDs
5	1	<b>MITCHELL TENPENNY</b> ✓ Drunk Me (Riser House/Columbia)	25357	3621	7964	1234	47.418	5.234	155	0
1	2	<b>KANE BROWN</b> /Lose It (RCA)	24423	-2604	7496	-970	48.694	-3.387	155	0
4	3	<b>DAN + SHAY</b> /Speechless (Warner Bros./WAR)	23042	1239	7293	392	42.993	1.653	155	1
3	4	<b>LUKE COMBS</b> /She Got The Best Of Me (River House/Columbia) ✓	22866	-725	7032	-228	46.59	-1.497	155	0
2	5	<b>JIMMIE ALLEN</b> /Best Shot (Stoney Creek)	22762	-2548	6987	-834	47.351	-3.563	155	0
8	6	<b>DIERKS BENTLEY f/BROS. OSBORNE</b> /Burning Man (Capitol) ✓	18752	1929	5888	606	34.658	1.787	155	2
7	7	<b>DUSTIN LYNCH</b> /Good Girl (Broken Bow)	18453	1073	5897	421	32.589	1.318	153	0
6	8	<b>KIP MOORE</b> /Last Shot (MCA)	18073	285	5762	99	33.083	0.2	154	1
9	9	<b>THOMAS RHETT</b> /Sixteen (Valory) ✓	17692	1574	5511	417	34.886	3.072	155	0
11	10	<b>BLAKE SHELTON</b> /Turnin' Me On (Warner Bros./WMN)	15366	-320	4851	-104	28.28	-0.801	155	1
12	11	<b>SCOTTY MCCREERY</b> /This Is It (Triple Tigers)	14887	928	4731	319	28.001	1.736	155	2
13	12	<b>JASON ALDEAN</b> /Girl Like You (Broken Bow) ✓	14801	1464	4488	462	29.817	3.758	155	4
14	13	<b>ERIC CHURCH</b> /Desperate Man (EMI Nashville)	14271	947	4635	275	24.424	0.378	154	0
15	14	<b>CHRIS STAPLETON</b> /Millionaire (Mercury)	13239	374	4287	158	25.045	0.413	153	1
16	15	<b>MIDLAND</b> /Burn Out (Big Machine)	13092	623	3966	124	24.57	1.062	154	0
18	16	<b>LUKE BRYAN</b> /What Makes You Country (Capitol)	12485	678	3964	237	22.982	1.324	154	1
17	17	<b>JORDAN DAVIS</b> /Take It From Me (MCA)	12459	178	3786	21	22.46	0.723	153	0
19	18	<b>RILEY GREEN</b> /There Was This Girl (BMLGR)	11836	323	3759	108	19.435	0.753	154	0
20	19	<b>JAKE OWEN</b> /Down To The Honkytonk (Big Loud)	10600	-238	3453	-45	17.32	-0.044	153	0
21	20	<b>TIM MCGRAW</b> /Neon Church (Columbia)	9268	279	2948	106	15.937	-0.398	154	0
10	21	<b>MAREN MORRIS</b> /Rich (Columbia)	8747	-6952	2706	-2344	16.731	-12.827	153	0
22	22	<b>MICHAEL RAY</b> /One That Got Away (Atlantic/WEA)	8184	465	2516	153	12.929	0.867	147	5
24	23	<b>KEITH URBAN</b> /Never Comin Down (Capitol)	7710	768	2335	172	13	1.465	141	2
23	24	<b>JON PARDI</b> /Night Shift (Capitol)	7589	474	2342	171	13.095	0.857	145	4
25	25	<b>CARRIE UNDERWOOD</b> /Love Wins (Capitol)	7535	900	2324	310	13.294	2.649	144	7

©2018 Country Aircheck™ — All rights reserved. Sign up free at [www.countryaircheck.com](http://www.countryaircheck.com). Send news to [news@countryaircheck.com](mailto:news@countryaircheck.com)

CONGRATULATIONS KACEY!  
**GOLDEN HOUR**

APPLE MUSIC  
GLOBAL ALBUM OF THE YEAR

+  
4X GRAMMY NOMINEE

UNIVERSAL  
UNIVERSAL MUSIC GROUP

SANDBOX  
MUSIC & ENTERTAINMENT

RECORDING ACADEMY

LW	TW	Artist/Title (Label)	Total Points	+/- Points	Total Plays	+/- Plays	Audience	+/- Aud	Stations	ADDS
27	26	📶 OLD DOMINION/Make It Sweet (RCA)	7516	936	2309	325	12.928	1.256	139	13
26	27	📶 K. CHESNEY f/M. SMITH/Better... (Blue Chair/Warner Bros./WEA)	7141	526	2288	178	11.665	1.688	144	4
28	28	📶 TYLER RICH/The Difference (Valory)	6540	311	2148	104	9.067	0.574	138	0
29	29	📶 CODY JOHNSON/On My Way To You (CoJo Music/WMN)	5782	615	1657	164	9.693	0.868	125	14
30	30	📶 BRETT YOUNG/Here Tonight (BMLGR)	5700	772	1789	258	8.613	0.363	136	12
31	31	📶 ELI YOUNG BAND/Love Ain't (Valory)	4777	-104	1449	21	6.301	-0.557	123	3
32	32	📶 CHASE RICE/Eyes On You (Broken Bow)	4495	121	1310	66	5.818	0.171	120	3
37	33	📶 KELSEA BALLERINI/Miss Me More (Black River)	4376	811	1268	247	6.647	1.245	117	11
36	34	📶 BRETT ELDREDGE/Love Someone (Atlantic/WMN)	4341	673	1235	180	6.514	0.926	118	19
34	35	GRANGER SMITH/You're In It (Wheelhouse)	4080	-29	1284	-3	4.85	-0.011	119	2
35	36	📶 RODNEY ATKINS/Caught Up In The Country (Curb)	4063	113	1351	19	5.271	0.134	113	2
<b>AIRBORNE</b>		<b>LUKE COMBS/Beautiful Crazy (River House/Columbia)</b>	<b>3950</b>	<b>1895</b>	<b>1149</b>	<b>513</b>	<b>7.487</b>	<b>3.308</b>	<b>105</b>	<b>28</b>
33	38	TRAVIS DENNING/David Ashley Parker From... (Mercury)	3796	-354	1316	-87	4.039	-0.542	131	0
39	39	📶 LOCASH/Feels Like A Party (Wheelhouse)	3419	357	1145	114	3.62	0.354	102	5
40	40	📶 RASCAL FLATTS/Back To Life (Big Machine)	3199	230	934	59	3.468	0.346	128	2
38	41	📶 RANDY HOUSER f/H. LINDSEY/What Whiskey... (Stoney Creek)	3193	22	1031	1	3.703	0.388	107	1
<b>AIRBORNE</b>		<b>LEE BRICE/Rumor (Curb)</b>	<b>3115</b>	<b>317</b>	<b>928</b>	<b>116</b>	<b>4.379</b>	<b>0.12</b>	<b>98</b>	<b>21</b>
41	43	📶 MORGAN WALLEN/Whiskey Glasses (Big Loud)	2926	58	949	8	3.633	0.135	110	3
44	44	📶 RUNAWAY JUNE/Buy My Own Drinks (Wheelhouse)	2690	66	876	22	2.68	-0.241	92	1
43	45	📶 MADDIE & TAE/Friends Don't (Mercury)	2658	22	865	20	3.665	0.084	101	2
45	46	📶 FLORIDA GEORGIA LINE/Talk You Out Of It (BMLGR)	2588	129	854	88	4.123	0.01	92	9
46	47	📶 BRANDON LAY/Yada Yada Yada (EMI Nashville)	2404	8	770	-12	2.195	0.061	101	0
50	48	📶 BILLY CURRINGTON/Bring It On Over (Mercury)	1826	84	561	26	2.249	0.127	89	3
49	49	📶 MORGAN EVANS/Day Drunk (Warner Bros./WEA)	1684	-141	554	0	1.833	-0.481	77	5
48	50	BRAD PAISLEY/Bucked Off (Arista)	1681	-178	505	-44	2.952	-0.844	91	12

©2018 Country Aircheck™ — All rights reserved. Sign up free at [www.countryaircheck.com](http://www.countryaircheck.com). Send news to [news@countryaircheck.com](mailto:news@countryaircheck.com)

**I THINK TOO MUCH**

“I Think Too Much is the trio’s strongest release to date and destined to be their biggest playlist bop yet.”

**-PHIL GUERINI, VP, MUSIC STRATEGY  
DCWW & GM, RADIO DISNEY NETWORK**

*Southern Halo*

[www.southernhalo.net](http://www.southernhalo.net)



**Country Aircheck Add Leaders**

	<b>Adds</b>
<b>LUKE COMBS</b> /Beautiful Crazy (River House/Columbia)	<b>28</b>
<b>DEVIN DAWSON</b> /Dark Horse (Atlantic/WEA)	<b>22</b>
<b>LEE BRICE</b> /Rumor (Curb)	<b>21</b>
<b>BRETT ELDREDGE</b> /Love Someone (Atlantic/WMN)	<b>19</b>
<b>CODY JOHNSON</b> /On My Way To You (CoJo Music/WMN)	<b>14</b>
<b>GARTH BROOKS</b> /Stronger Than Me (Pearl)	<b>14</b>
<b>OLD DOMINION</b> /Make It Sweet (RCA)	<b>13</b>
<b>RUSSELL DICKERSON</b> /Every Little Thing (Triple Tigers)	<b>13</b>
<b>BRAD PAISLEY</b> /Bucked Off (Arista)	<b>12</b>
<b>BRETT YOUNG</b> /Here Tonight (BMLGR)	<b>12</b>

**Country Aircheck Top Point Gainers**

<b>MITCHELL TENPENNY</b> /Drunk Me (Riser House/Columbia)	<b>3621</b> ✓
<b>DIERKS BENTLEY f/BROS. OSBORNE</b> /Burning Man (Capitol)	<b>1929</b> ✓
<b>LUKE COMBS</b> /Beautiful Crazy (River House/Columbia)	<b>1895</b> ✓
<b>THOMAS RHETT</b> /Sixteen (Valory)	<b>1574</b> ✓
<b>JASON ALDEAN</b> /Girl Like You (Broken Bow)	<b>1464</b> ✓
<b>DAN + SHAY</b> /Speechless (Warner Bros./WAR)	<b>1239</b>
<b>DUSTIN LYNCH</b> /Good Girl (Broken Bow)	<b>1073</b>
<b>ERIC CHURCH</b> /Desperate Man (EMI Nashville)	<b>947</b>
<b>OLD DOMINION</b> /Make It Sweet (RCA)	<b>936</b>
<b>SCOTTY MCCREERY</b> /This Is It (Triple Tigers)	<b>928</b>

**Country Aircheck Top Spin Gainers**

<b>MITCHELL TENPENNY</b> /Drunk Me (Riser House/Columbia)	<b>1234</b>
<b>DIERKS BENTLEY f/BROS. OSBORNE</b> /Burning Man (Capitol)	<b>606</b>
<b>LUKE COMBS</b> /Beautiful Crazy (River House/Columbia)	<b>513</b>
<b>JASON ALDEAN</b> /Girl Like You (Broken Bow)	<b>462</b>
<b>DUSTIN LYNCH</b> /Good Girl (Broken Bow)	<b>421</b>
<b>THOMAS RHETT</b> /Sixteen (Valory)	<b>417</b>
<b>DAN + SHAY</b> /Speechless (Warner Bros./WAR)	<b>392</b>
<b>OLD DOMINION</b> /Make It Sweet (RCA)	<b>325</b>
<b>SCOTTY MCCREERY</b> /This Is It (Triple Tigers)	<b>319</b>
<b>CARRIE UNDERWOOD</b> /Love Wins (Capitol)	<b>310</b>

**Activator Top Point Gainers**

<b>DIERKS BENTLEY f/BROS OSBORNE</b> /Burning Man (Capitol)	<b>1588</b> ✓
<b>DAN + SHAY</b> /Speechless (Warner Bros./WAR)	<b>1336</b> ✓
<b>JASON ALDEAN</b> /Girl Like You (Broken Bow)	<b>1302</b> ✓
<b>MITCHELL TENPENNY</b> /Drunk Me (Riser House/Columbia)	<b>1295</b> ✓
<b>KIP MOORE</b> /Last Shot (MCA)	<b>1182</b> ✓
<b>DUSTIN LYNCH</b> /Good Girl (Broken Bow)	<b>1065</b>
<b>THOMAS RHETT</b> /Sixteen (Valory)	<b>910</b>
<b>LUKE BRYAN</b> /What Makes You Country (Capitol)	<b>891</b>
<b>CARRIE UNDERWOOD</b> /Love Wins (Capitol)	<b>858</b>
<b>SCOTTY MCCREERY</b> /This Is It (Triple Tigers)	<b>857</b>

**Activator Top Spin Gainers**

<b>DIERKS BENTLEY f/BROS OSBORNE</b> /Burning Man (Capitol)	<b>316</b>
<b>DAN + SHAY</b> /Speechless (Warner Bros./WAR)	<b>287</b>
<b>MITCHELL TENPENNY</b> /Drunk Me (Riser House/Columbia)	<b>266</b>
<b>JASON ALDEAN</b> /Girl Like You (Broken Bow)	<b>249</b>
<b>DUSTIN LYNCH</b> /Good Girl (Broken Bow)	<b>223</b>
<b>THOMAS RHETT</b> /Sixteen (Valory)	<b>211</b>
<b>KIP MOORE</b> /Last Shot (MCA)	<b>197</b>
<b>OLD DOMINION</b> /Make It Sweet (RCA)	<b>191</b>
<b>SCOTTY MCCREERY</b> /This Is It (Triple Tigers)	<b>165</b>
<b>LUKE BRYAN</b> /What Makes You Country (Capitol)	<b>150</b>

**Country Aircheck Top Recurrents**

	<b>Points</b>
<b>RUSSELL DICKERSON</b> /Blue Tacoma (Triple Tigers)	<b>12711</b>
<b>CHRIS YOUNG</b> /Hangin' On (RCA)	<b>12462</b>
<b>LUKE COMBS</b> /One Number Away (River House/Columbia)	<b>11270</b>
<b>OLD DOMINION</b> /Hotel Key (RCA)	<b>9536</b>
<b>DAN + SHAY</b> /Tequila (Warner Bros./WAR)	<b>9431</b>
<b>KENNY CHESNEY</b> /Get Along (Blue Chair/Warner Bros./WEA)	<b>9354</b>
<b>KANE BROWN</b> /Heaven (RCA)	<b>9121</b>
<b>J. ALDEAN f/M. LAMBERT</b> /Drowns The Whiskey (Broken Bow)	<b>7538</b>
<b>SAM HUNT</b> /Body Like A Back Road (MCA)	<b>6894</b>
<b>BEBE REXHA f/FGL</b> /Meant To Be (WBR/BMLGR)	<b>6747</b>

©2018 Country Aircheck™ — All rights reserved. Sign up free at [www.countryaircheck.com](http://www.countryaircheck.com). Send news to [news@countryaircheck.com](mailto:news@countryaircheck.com)

**GOT A LIFE TO CATCH**  
 produced by Merle Haggard and Ace Otten

amy jack

**AVAILABLE NOW**

**COUNTRY AIRCHECK ACTIVITY**

**MADDIE & TAE/Friends Don't (Mercury)**

Moves 43-45\*  
2,658 points, 865 spins  
2 adds: **KJUG, WQIK**

**FLORIDA GEORGIA LINE/Talk You Out Of It (BMLGR)**

Moves 45-46\*  
2,588 points, 854 spins  
9 adds: **KMNB, WAVW, WCTQ, WDAF, \*WGKX, WKKT, WKSJ, \*WPCV, \*WQHK**

**BRANDON LAY/Yada Yada Yada (EMI Nashville)**

Moves 46-47\*  
2,404 points, 770 spins; no adds

**BILLY CURRINGTON/Bring It On Over (Mercury)**

Moves 50-48\*  
1,826 points, 561 spins  
3 adds: **WDAF, WTGE, WUSJ**

**MORGAN EVANS/Day Drunk (Warner Bros./WEA)**

Remains at 49\*  
1,684 points, 554 spins  
5 adds: **KHEY, KRYS, KXLY, WAVW, \*WQHK**

**BRAD PAISLEY/Bucked Off (Arista)**

Moves 48-50  
1,681 points, 505 spins  
12 adds including: **KAWO, KHEY, KMDL, KWBL, WDAF, WGNA, WITL, \*WMZQ, WOKQ, WTHT**

**DAVID LEE MURPHY/I Won't Be Sorry (Reviver)**

1,660 points, 520 spins  
1 add: **KUZZ**

**LAUREN ALAINA/Ladies In The '90s (19/Mercury)**

1,649 points, 488 spins  
8 adds: **KAJA, KDRK, \*KSKS, WAVW, WDXB, \*WGKX, WPOR, WTGE**

**JUSTIN MOORE/The Ones That Didn't Make It... (Valory)**

1,548 points, 465 spins; no adds

**ADD DATES**

**January 7**

None Listed

**January 14**

**ASHLEY MCBRYDE/Girl Goin' Nowhere (Atlantic/WAR)**  
**DYLAN SCOTT/Nothing To Do Town (Curb)**

**January 21**

None Listed

Send yours to [adds@countryaircheck.com](mailto:adds@countryaircheck.com)

**CHECK OUT 12/14**



**Mitchell Tenpenny Telling All My Secrets (Riser House/Columbia)**

Tenpenny wrote 56 songs for his debut full-length album, with 11 tracks making the cut, including singles "Drunk Me," co-penned by Jordan Schmidt and Justin Wilson, and "Alcohol You Later," written with Sam Sumser and Michael Lotten.

January 11, 2019

**Randy Houser Magnolia (Stoney Creek)**

January 18, 2019

**Cody Johnson Ain't Nothin' To It (CoJo Music/Warner Bros./WMN)**

**Ronnie Milsap Ronnie Milsap: The Duets (Riser House/Sony)**

TBD 2019

**Tim McGraw** — (Columbia)

**Billy Ray Cyrus The SnakeDoctor Circus (—)**

©2018 Country Aircheck™ — All rights reserved. Sign up free at [www.countryaircheck.com](http://www.countryaircheck.com). Send news to [news@countryaircheck.com](mailto:news@countryaircheck.com)

**MUSICIANS ON CALL**

Musicians On Call brings live & recorded music to the bedsides of patients in healthcare facilities.

**CLICK HERE FOR MORE INFO**

LW	TW	Artist/Title (Label)	Points	+/- Points	Plays	+/- Plays	Stations	ADDS
3	1	<b>MITCHELL TENPENNY</b> ✓ Drunk Me (Riser House/Columbia)	11428	1295	2554	266	54	0
4	2	<b>DAN + SHAY</b> /Speechless (Warner Bros./WAR) ✓	11321	1336	2472	287	54	0
1	3	<b>KANE BROWN</b> /Lose It (RCA)	11137	-224	2457	-107	54	0
2	4	<b>JIMMIE ALLEN</b> /Best Shot (Stoney Creek)	9997	-602	2181	-212	52	0
7	5	<b>DIERKS BENTLEY f/BROS. OSBORNE</b> /Burning Man (Capitol) ✓	9762	1588	2085	316	54	0
5	6	<b>KIP MOORE</b> /Last Shot (MCA) ✓	9675	1182	2062	197	53	0
9	7	<b>DUSTIN LYNCH</b> /Good Girl (Broken Bow)	9172	1065	1964	223	53	0
8	8	<b>THOMAS RHETT</b> /Sixteen (Valory)	9050	910	1883	211	54	0
11	9	<b>BLAKE SHELTON</b> /Turnin' Me On (Warner Bros./WMN)	8202	361	1735	53	53	0
12	10	<b>SCOTTY MCCREERY</b> /This Is It (Triple Tigers)	7610	857	1600	165	53	0
15	11	<b>JASON ALDEAN</b> /Girl Like You (Broken Bow) ✓	7295	1302	1511	249	54	0
13	12	<b>CHRIS STAPLETON</b> /Millionaire (Mercury)	6874	654	1506	95	51	0
14	13	<b>ERIC CHURCH</b> /Desperate Man (EMI Nashville)	6398	253	1427	109	49	0
16	14	<b>LUKE BRYAN</b> /What Makes You Country (Capitol)	6393	891	1355	150	53	1
18	15	<b>MIDLAND</b> /Burn Out (Big Machine)	5948	574	1268	100	54	0
17	16	<b>TIM MCGRAW</b> /Neon Church (Columbia)	5849	466	1230	71	53	0
20	17	<b>JORDAN DAVIS</b> /Take It From Me (MCA)	5829	621	1235	110	54	0
19	18	<b>JAKE OWEN</b> /Down To The Honkytonk (Big Loud)	5714	427	1215	56	53	0
21	19	<b>RILEY GREEN</b> /There Was This Girl (BMLGR)	5293	550	1141	114	53	0
6	20	<b>MAREN MORRIS</b> /Rich (Columbia)	5290	-2953	1173	-679	45	0
23	21	<b>OLD DOMINION</b> /Make It Sweet (RCA)	4588	792	897	191	53	12
22	22	<b>KENNY CHESNEY f/M. SMITH</b> /Better Boat (Blue Chair/Warner Bros./WEA)	4576	488	952	74	51	0
24	23	<b>KEITH URBAN</b> /Never Comin Down (Capitol)	4251	584	837	108	52	2
26	24	<b>CARRIE UNDERWOOD</b> /Love Wins (Capitol)	3690	858	737	146	53	3
27	25	<b>JON PARDI</b> /Night Shift (Capitol)	3490	660	744	138	50	4
25	26	<b>MICHAEL RAY</b> /One That Got Away (Atlantic/WEA)	3474	117	678	36	51	2
28	27	<b>CODY JOHNSON</b> /On My Way To You (CoJo Music/WMN)	3328	749	624	150	50	9
30	28	<b>BRETT YOUNG</b> /Here Tonight (BMLG)	2637	659	517	145	50	11
29	29	<b>ELI YOUNG BAND</b> /Love Ain't (Valory)	2400	-113	488	-8	43	1
31	30	<b>TYLER RICH</b> /The Difference (Valory)	2247	298	475	62	44	8

©2018 Country Aircheck™ — All rights reserved. Sign up free at [www.countryaircheck.com](http://www.countryaircheck.com). Send news to [news@countryaircheck.com](mailto:news@countryaircheck.com)

SIGN UP  
NOW  
FOR

# The Gift

## A 3-HOUR CHRISTMAS RADIO SPECIAL

PRESENTED BY



HOSTED BY

**Brett Eldredge**



Barter Free / 14 mins of avails each hour for stations to utilize

Written and produced by Sharla McCoy

Contact Sharla McCoy at [sharlamccoy@gmail.com](mailto:sharlamccoy@gmail.com)

LW	TW	Artist/Title (Label)	Points	+/-	Points	Plays	+/-	Plays	Stations	Adds
32	31	<b>KELSEA BALLERINI</b> /Miss Me More (Black River)	2045		492	375		95	39	4
38	32	<b>BRETT ELDREDGE</b> /Love Someone (Atlantic/WMN)	1366		326	283		89	35	7
33	33	<b>BRAD PAISLEY</b> /Bucked Off (Arista)	1363		-2	240		-7	23	3
34	34	<b>MORGAN WALLEN</b> /Whiskey Glasses (Big Loud)	1251		33	212		2	25	0
42	35	<b>FLORIDA GEORGIA LINE</b> /Talk You Out Of It (BMLGR)	1204		307	231		39	27	1
44	36	<b>LUKE COMBS</b> /Beautiful Crazy (River House/Columbia)	1166		372	240		97	26	8
36	37	<b>RASCAL FLATTS</b> /Back To Life (Big Machine)	1146		41	228		13	34	0
37	38	<b>RODNEY ATKINS</b> /Caught Up In The Country (Curb)	1125		66	271		6	35	2
46	39	<b>LEE BRICE</b> /Rumor (Curb)	1112		398	189		87	22	8
35	40	<b>TRAVIS DENNING</b> /David Ashley Parker From... (Mercury)	1090		-77	244		-32	38	2
39	41	<b>LOCASH</b> /Feels Like A Party (Wheelhouse)	1079		91	232		24	24	2
40	42	<b>BILLY CURRINGTON</b> /Bring It On Over (Mercury)	1014		57	163		9	15	1
43	43	<b>CHASE RICE</b> /Eyes On You (Broken Bow)	896		79	201		14	36	2
41	44	<b>CHRIS LANE</b> /I Don't Know About You (Big Loud)	863		-45	96		-4	4	0
53	45	<b>RANDY HOUSER f/H. LINDSEY</b> /What Whiskey Does (Stoney Creek)	850		313	175		44	27	0
45	46	<b>GRANGER SMITH</b> /You're In It (Wheelhouse)	776		-3	192		3	35	0
47	47	<b>MADDIE &amp; TAE</b> /Die From A Broken Heart (Mercury)	710		0	71		0	2	0
48	48	<b>RUNAWAY JUNE</b> /Buy My Own Drinks (Wheelhouse)	673		5	134		3	21	0
49	49	<b>RYAN HURD</b> /To a T (RCA)	650		0	65		0	1	0
51	50	<b>BRANDON LAY</b> /Yada Yada Yada (EMI Nashville)	625		-4	143		0	22	0
54	51	<b>CJ SOLAR</b> /American Girls (Sea Gayle)	621		91	119		18	13	1
52	52	<b>CARLY PEARCE</b> /Closer To You (Big Machine)	604		25	86		5	8	0
Debut	53	<b>GARTH BROOKS</b> /Stronger Than Me (Pearl)	565		344	81		41	8	2
47	54	<b>MADDIE &amp; TAE</b> /Friends Don't (Mercury)	545		15	102		5	21	1
59	55	<b>LAUREN ALAINA</b> /Ladies In The '90s (19/Mercury)	511		73	71		10	15	0
56	56	<b>RAE LYNN</b> /Tailgate (Warner Bros./WMN)	500		0	50		0	2	0
57	57	<b>WALKER HAYES</b> /90's Country (Monument/Arista)	450		-50	45		-5	2	0
60	58	<b>SOUTHERN HALO</b> /I Think Too Much (Southern Halo)	424		2	85		1	11	0
50	59	<b>PISTOL ANNIES</b> /Got My Name Changed Back (RCA)	407		-230	54		-12	19	1
Debut	60	<b>CODY JINKS</b> /Must Be The Whiskey (Rounder/Concord)	393		7	69		2	9	0

©2018 Country Aircheck™ — All rights reserved. Sign up free at [www.countryaircheck.com](http://www.countryaircheck.com). Send news to [news@countryaircheck.com](mailto:news@countryaircheck.com)

**SO CAN YOU.**

**Get THIS SHIRT**